



BEDFORD
BASKETBALL LEAGUE

RECREATION LEAGUE RULES REVIEW
WELCOME





BEDFORD
BASKETBALL LEAGUE

RECREATION LEAGUE RULES REVIEW GAME DAY - PREGAME

- REFEREES WILL BE TRYING TO KEEP START TIMES ON TIME
- WARM UP ON BASKET **OPPOSITE** YOUR BENCH
- NO NEED FOR PARENT RECRUITMENT, LEAGUE WILL SUPPLY TABLE PERSON
- CHECK FOR JEWELRY DURING WARMUPS
 - NO EARRINGS, BRACELETS, OR NECKLACES
 - TAPE UP ANY MEDICAL OR RELIGIOUS MEDALS OR EARRINGS THAT CANT BE REMOVED
 - PLAYERS COMING OUT FOR THE TIP WITH JEWELRY WILL BE ASKED TO BE REPLACED



BEDFORD BASKETBALL LEAGUE

RECREATION LEAGUE RULES REVIEW RULES THAT APPLY TO ALL DIVISIONS

- EACH COACH WILL GET A POCKET RULE CARD INCLUDED IN THEIR UNIFORM PICKUP PACKAGE
- GAMES ARE PLAYED UNDER NFHS (NATIONAL FEDERATION HIGH SCHOOL) RULES IF NOT STATED OTHERWISE
- BBL RULES THAT APPLY TO ALL DIVISIONS
 - 20-minute halves
 - Running time, including during foul shots and substitutions, except the last two minutes of each half.
 - Subs at 5-minute intervals only (except for injury and overtime)
 - No player should have more than one more shift than any other player (violation results in a forfeit)
 - 1 and 1 at 7 fouls in each half, 2 foul shots at 10 fouls, no foul shots on offensive fouls.
 - Teams must play man to man the first 10 minutes of the game. After the first 10 minutes any defense can be played. (Help defense is allowed). There will be one warning per half. Man to man penalty is a team foul.
 - Backcourt defense (as defined in each division) is given one warning per half. Penalty is a personal foul.
 - Each team gets 3 timeouts per game, no more than two per half, **subbing is not a time out**
 - Overtime will be for 2 minutes. Any 5 players can play and subs are allowed during dead balls. Regular season games can end in a tie.
- TECHNICAL FOULS
 - First – player T is a personal and team foul, bench T is a team foul (coach seat-belted)
 - Second – ejection from the game and gym and subject to rules of behavior suspension



BEDFORD
BASKETBALL LEAGUE

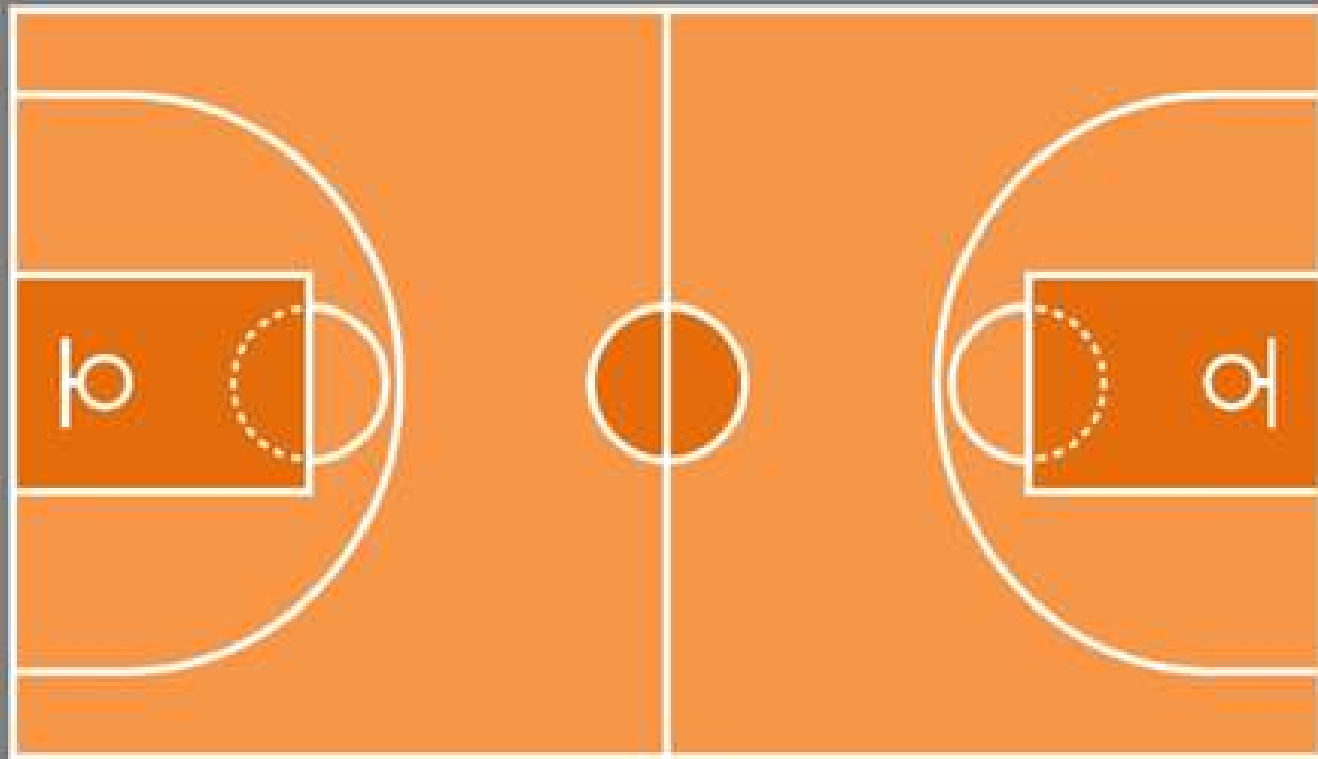
RECREATION LEAGUE RULES REVIEW DIVISION SPECIFIC RULES

3RD & 4TH GRADE DIVISION RULES

- No 3-point goals.
- Free throws may be taken from first hash mark, players can jump over.
- No defense allowed outside your 3-point circle until the last 5 minutes of each half when pressing is allowed up to the half court line.
- 3 second rule is modified to 5 seconds.
- For the first 3 weeks of the season violations will not result in a turnover.

BLACK TEAM BENCH

WHITE TEAM BENCH





BEDFORD
BASKETBALL LEAGUE

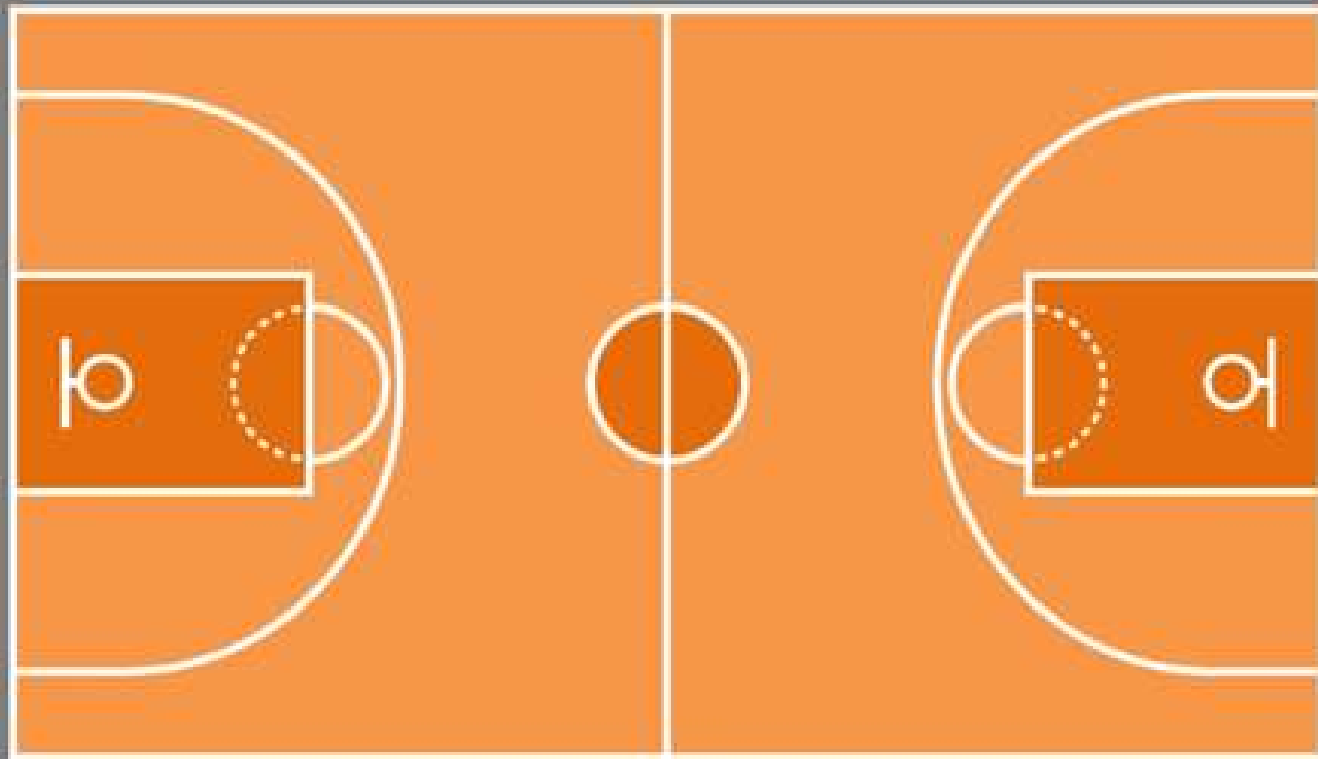
RECREATION LEAGUE RULES REVIEW DIVISION SPECIFIC RULES

5TH & 6TH GRADE DIVISION RULES

- No backcourt defense until the last 5 minutes of each half when pressing is allowed to the backcourt 3-point circle.
- 3 seconds is modified to 4 seconds.
- (Player can not go over the line on free throws)

BLACK TEAM BENCH

WHITE TEAM BENCH





BEDFORD
BASKETBALL LEAGUE

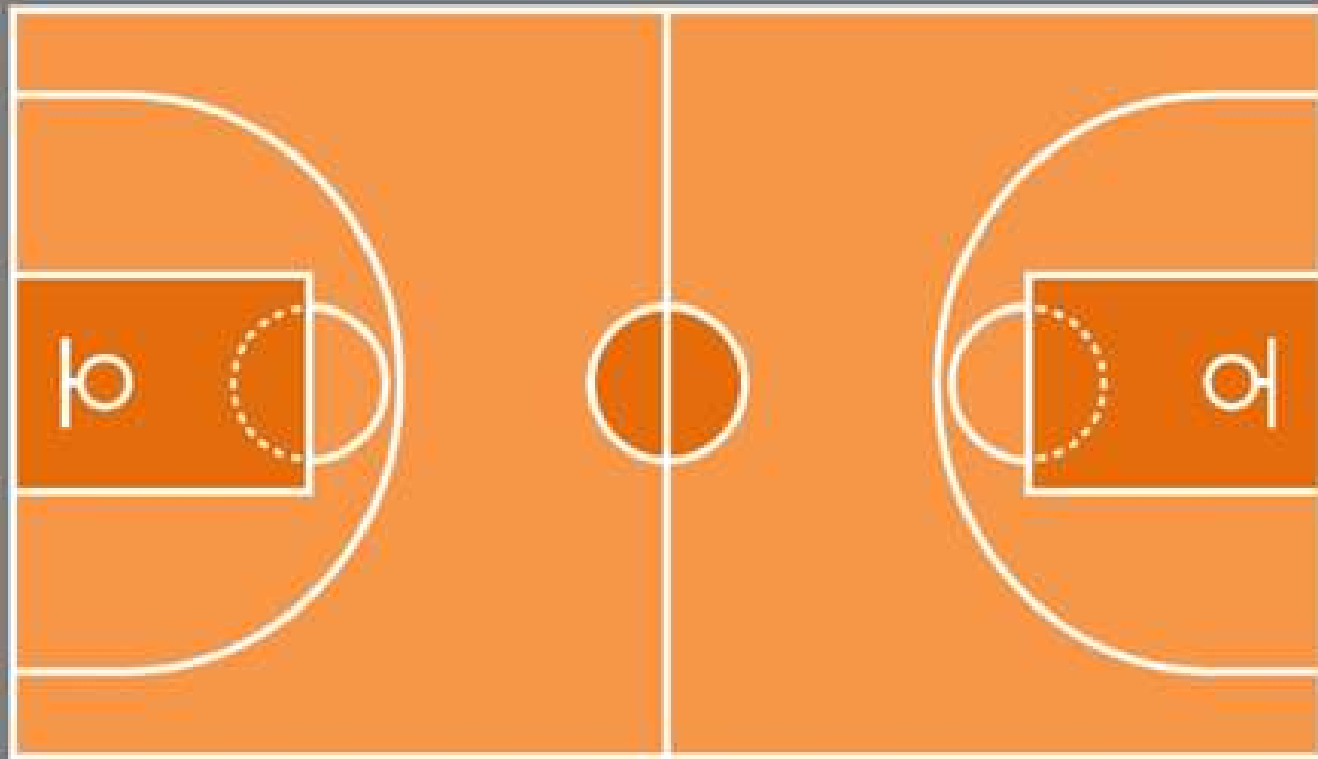
RECREATION LEAGUE RULES REVIEW DIVISION SPECIFIC RULES

7TH & 8TH GRADE DIVISION RULES

- No defense is allowed inside your opponent's 3-point circle until the last 5 minutes of each half when full-court defense is allowed.
- (3 seconds is 3 seconds)
- (Closely guarded will be called)

BLACK TEAM BENCH

WHITE TEAM BENCH





BEDFORD
BASKETBALL LEAGUE

RECREATION LEAGUE RULES REVIEW RULES OF BEHAVIOUR

- No individual is allowed to openly criticize a referee. Questions should be discussed calmly during time-outs or following the game. The referee's decisions are final. BBL Directors, referees and the division coordinators have the authority to assess game ejections for violations of this rule.
- If a referee, coordinator or board member feels that any spectator's behavior is unacceptable during a game, coaches will be asked to talk to the offending individual. The next transgression will result in an official warning by the referee. If the problem continues, a technical foul will be assessed and the individual will be asked to leave the gym before play is resumed. The incident will be reported to the BBL Board by both coaches and officials involved for the Board's review and possible further action.
- Any individual ejected from a game by a referee, coordinator or director will automatically be suspended from participating in the team's next game. The ejection is subject to review by the BBL Board of Directors.
- Any individual ejected from a game by a referee for the second time in the same season will automatically be suspended for the remainder of the season (including tournaments and playoffs). This is subject to review by the BBL Board of Directors.
- Violations of these rules, unacceptable behavior and multiple, repeated, or significant transgressions will be subject to review by the BBL Board of Directors for disciplinary action. Possible penalties include, but are not limited to, warnings, suspensions and dismissals from the league. Any coach or official who, in the BBL Board's opinion, manipulates these rules against the spirit in which they are intended or contrary to a positive recreational experience for any of the participants, shall be subject to disciplinary action by the board. Nothing in this section shall prevent a referee, league official or director from immediately ejecting anyone from any gym at anytime for just cause.