



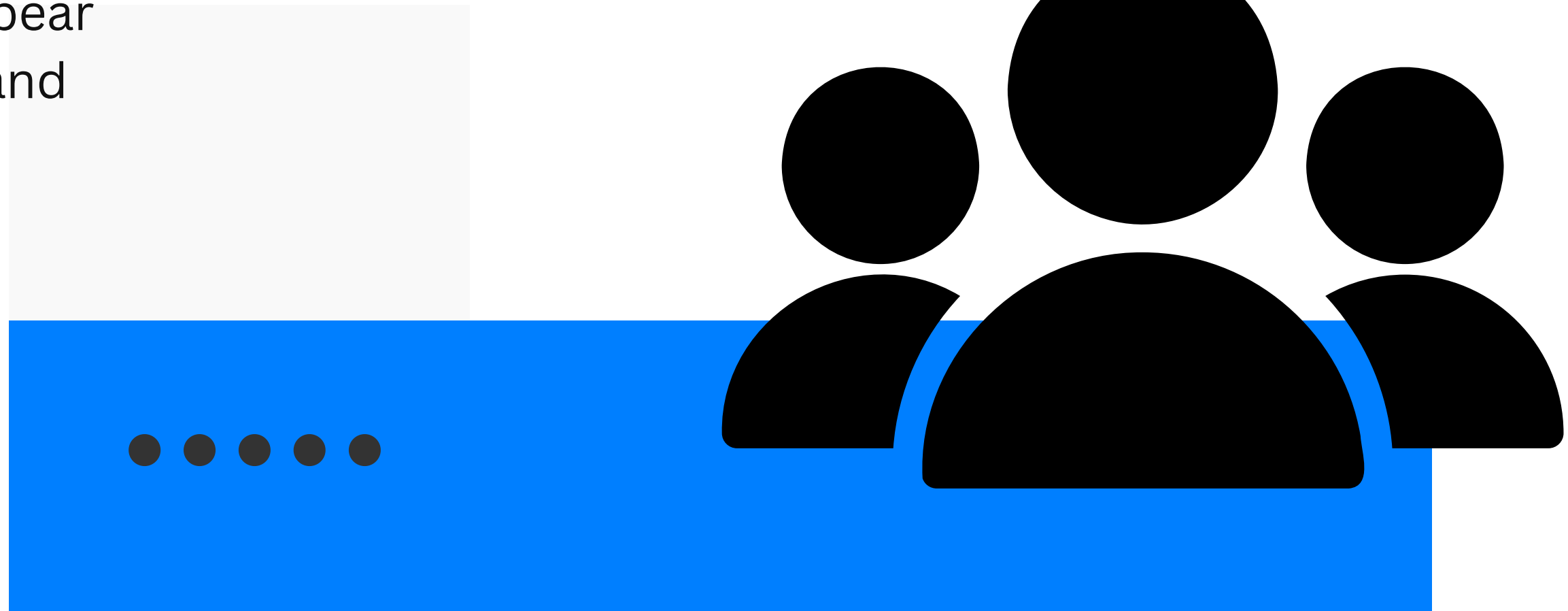
# BECKER YOUTH BASEBALL

2026

# BYBA BOARD MEMBERS 2026

- President -Brett Willhite
- Vice President - Joy Sherwood
- Treasurer - Molly Sytsma
- Administrator - Josh Laudenbach
- Equipment Director - Vern Johnson
- Volunteer Director - Jackie Brant
- Tournament Director -Ryan Priebe
- Scheduling Director - Dayna Munsch
- Concessions Director - Jessica Spear
- Junior Ball Director - Calen Kirkland
- Grounds Director- Jim Mlenek
- Fundraising Coordinator - Aaron Stupar
- Grounds Coordinator – Erik Graning
- Concessions Coordinator – Sarah Norman
- Player Development Coordinator – Ben Johnson
- Tournament Coordinator – OPEN
- Evaluations Coordinator – Jenica Grams
- Recruitment and Retention Coordinator- James Adelman

**JOIN THE FUN!**



# PROGRAM AGE LEVELS



## Junior Ball

T-Ball

4 & 5 year-olds

Coach Pitch

6 -8 year-olds

Joy



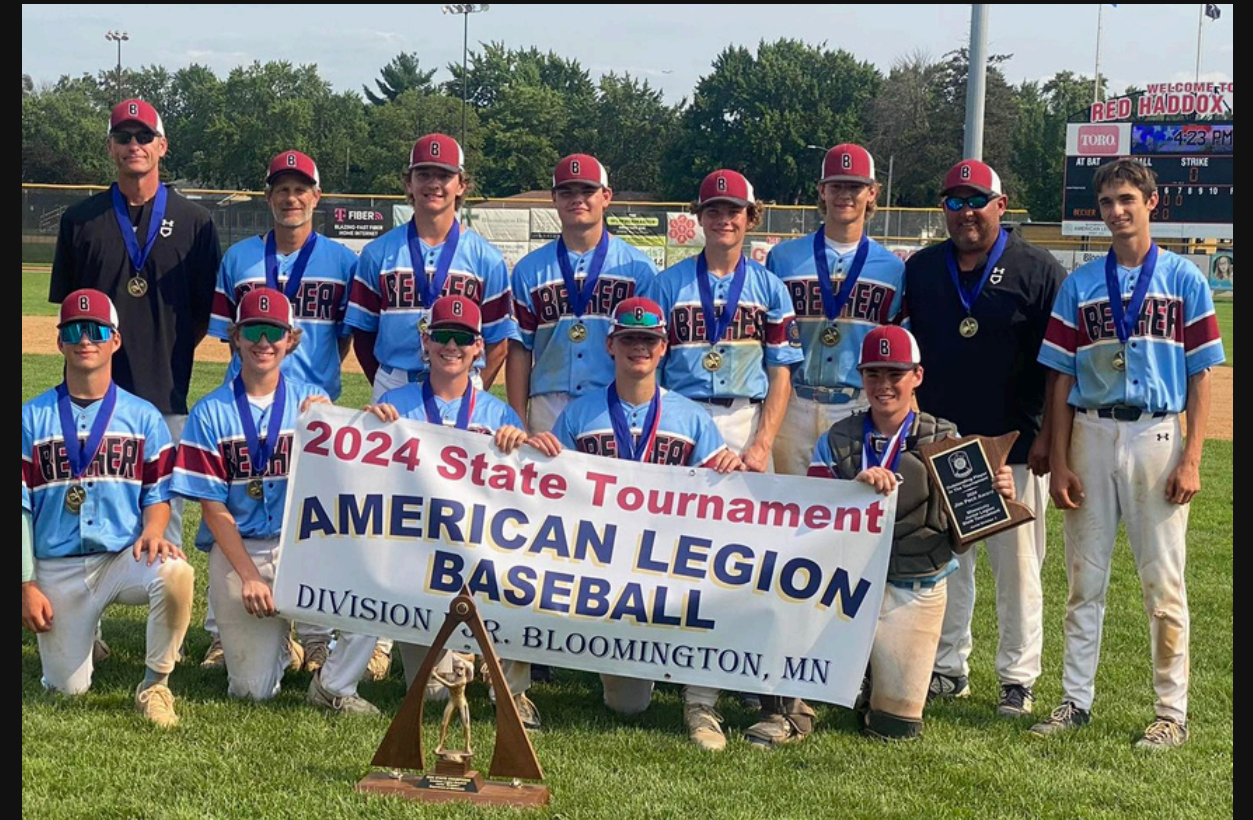
## 9U-18

CMCBL Teams

9U Thru 16U

Gopher State Teams

9U thru 19U



## Legion/Jr. Legion

15 & 16 year-olds

Legion

17 & 19 year-olds

Not registering through us

# REGISTRATION

## When you Register:

- Select Jr Ball, CMCBL, or Gopher State (if selected last fall)
- Select appropriate team or age group
- Sign the Code of Conduct form
- Apply to be a coach (if desired)
- Deadline March 22nd before \$50 late fee applies-
- Junior Ball Deadline April 20th
- Volunteer Deposits, choose option: due on custom date.

The screenshot displays a payment interface with two main sections: 'Order Summary' and 'Payment Options'. The 'Order Summary' table lists 'Gopher State' for \$300.00 and 'Volunteer Deposit' for \$275.00, with a subtotal of \$575.00, an 'Online Processing Fee' of \$19.11, and a final 'Total' of \$594.11. The 'Payment Options' section includes 'Pay in Full' for \$594.11 and 'Due on Custom Date' for \$310.45. A black circle highlights the 'Due on Custom Date' option, and an 'APPLY' button is visible at the bottom right.

Order Summary	
Gopher State	\$300.00
Volunteer Deposit	\$275.00
<b>Subtotal</b>	<b>\$575.00</b>
Online Processing Fee	\$19.11
<b>Total</b>	<b>\$594.11</b>

**Payment Options**

**\$594.11**  
Pay outstanding balance today

**\$310.45**  
Pay today, autopay the rest later ?  
Due on Custom Date  
Pay Mar 1, 2024 payment today  
autopay effective Nov 1, 2024

APPLY



Register @ [beckerbaseball.org](https://beckerbaseball.org)

# REGISTRATION

## F E E S

<b>Team:</b>	<b>Registration:</b>	<b>Gopher State Fee:</b>	<b>Volunteer Deposit (per family):</b>
T-Ball	\$45	N/A	\$100 (2 hours required)
Coach Pitch	\$65	N/A	\$100 (2 hours required)
CMCBL	\$200	N/A	\$275 (8 hours required)
Gopher State	\$200	\$100	\$275 (8 hours required)
Jr Legion	\$300	N/A	\$275 (8 hours required)

**\*Scholarships Due March 15th**

**What Registration Fees Cover:**  
Equipment, School fields, Field house, umpires, tournaments



# UNIFORMS



## *Junior Ball:*

- Jerseys & hats from last season can be used OR can use flag football reversible if you have one.
- Jerseys for sale on registration \$25
- Hats for sale out of concession, can use last years, or purchase new style for \$15 snap back or \$20 fitted



## *Gopher State Players:*

- Jersey sizing dates - Open Gyms
  - \*If ordering jerseys, deadline March 22nd. Done through **jersey registration**
  - \*BYBA will then order jerseys and get them delivered to coaches
- Gray/ white pants (coaches preference), belt, socks must be purchased by player
- Fitted Hats available for purchase (\$20 at concession stand- same as last year)



## *CMCBL Players:*

- Reversible jersey will be provided - Last year, players may keep at the end of the season
- Once teams are formed, coaches will help players select jersey size & #'s
- Gray pants, belt, socks must be purchased by player
- Hats available for purchase fitted (\$20) or snap back \$15 at concession stand



# JUNIOR BALL

REGISTRATION OPENS  
MARCH 1ST- APRIL 20TH

T-Ball 4 & 5 years olds  
(must be 4 by May 1st)

*\*Tuesdays & Thursdays*

*\*Begins May 19th runs thru June 25th (6 weeks)*

*\*Jamboree - June 25th*

Coach Pitch 6-8 years olds  
(must be 6 by May 1st)

*\*Mondays & Wednesdays*

*\*Begins May 4th runs thru June 24th (8 weeks)*

*\*Skills Competition – June 24th*

*\*Will play with Clear Lake teams*



**Parent Meeting**

**April 14th**

**HS Small Auditorium**

**6:30**

# 8U Evaluations

## Why?

- Other associations are true 9 year olds on 9U teams.
- To be more competitive with other associations.
- Another year to develop the player and understanding of baseball.
- Every player advances at different times, this allows the 8 year olds that are ready to move up.
- Safety of players.

## When?

March 29th 5:00  
in the Field House  
No need to pre-register.

## Who?

Any 8U and under player  
looking to play CMCBL

# EVALUATIONS

EVALUATORS:  
FLEXX BASEBALL

**AUGUST 5TH & 6TH  
2026**

Why Evaluate if you don't want to play Gopher State?

- Help identify areas of strengths and weaknesses
- Get to play high level of baseball with professional Evaluators for \$40
- It will help balance our CMCBL teams
- Players can track scores from year to year under their FLEXXBALL "profile"



Volunteers must  
sign up on Dibs



9U plays 12-game regular season schedule + one guaranteed playoff matchup  
 10U-14U plays 14-game regular season schedule + one guaranteed playoff matchup  
 15U plays 14-game regular season + one guaranteed playoff matchup  
 16U-19U plays 12-game regular season + one guaranteed playoff matchup

## 2026 GSTC DATES (TENTATIVE)

JULY 10-12	JULY 17-19	JULY 24-26
9AAA	10AAA	9AA / 9A
10AA	11AAA	10A
11AA	12AAA	11A
12AA	13AAA	12A
13AA	14AAA	13A
15AA/AAA	15A	14AA
		14A



# CENTRAL MN COMMUNITY BASEBALL LEAGUE

# CMCBL

Teams from Foley, Sartell, Waite Park, Sauk Rapids, etc...

## **Team Formation:**

\*Draft process where coaches use Evaluation scores and prior knowledge of players to select teams.

## **Draft Information:**

Week of April 6th at Becker Community Center (only coaches need to attend)

\*Coaches will reach out to teams within a day or so

Jersey Distribution: Vern will be in contact with coaches





# CENTRAL MN COMMUNITY BASEBALL LEAGUE

## Game Nights:

- 9U Mon/Wed Starting week of May 18
- 11U Tue/Thu Starting week of May 18
- 13U Mon/Wed Starting week of May 18
- 16U Tue/Thu Starting May 25th

\*\*\*Schedule may vary a bit based on field availability and make up games

# CMCBL

## End of Season Tournaments:

### End of July

- Host sites vary and will be determined at a later date
- Teams divided into Tiers (A, B, C) based on win percentage



# COACHING INFORMATIONS

**01** All coaches must register through our website

**02** All coaches will be given a yearly background check-  
Due prior to coaches meeting

**03** All coaches will have to complete concussion and first aid  
training every 3 years through Trusted Coaches

**04** Gopher State coaches must schedule their own games

**05** All coaches must register for their own tournaments  
(exception – Becker Tournament)

All coaches must  
attend  
Coach's Meeting  
TBD



# TEAM TRAINING FOR SUCCESS

COACHES MEETING

TBD

- \*Assign equipment
- \*Go over Trusted Coaches program and background checks
- \*Go over field prep instructions
- \*Go over coaching expectations
- \*Discuss the “Top Dog” nomination process
- \*Brand Becker Baseball



Josh



# VOLUNTEER PROGRAM

BECKER YOUTH BASEBALL DIBS

T-Ball/Coach Pitch:	2 hours required	\$100 deposit that will be held upon registration
CMCBL / Gopher State:	8 hours required	\$275 deposit that will be held upon registration
Jr Legion:	8 hours required.	\$275 deposit that will be held upon registration

**VOLUNTEERS  
NEEDED**

## Opportunities:

open gyms, clinics, evaluations, cleanup days, concessions, tournaments, meat raffles and jamboree

**It will be your responsibility to sign in at each event you sign up for - If you do not sign in, you will not be given credit.**

- \*Volunteer obligations waived for one Head Coach, one Assistant Coach, and one Manager per team- receive hours on DIBS
- \* Cancelled volunteer spots due to weather will have to be made up
  - If your child is old enough to fulfill volunteer hours they **MUST** claim a DIBS spot on the website.

# TRAINING, CLINICS, WORKSHOPS

*You will only get out of it, what you put into it!*

## Remaining Open Gyms:

- Mar 1
- Mar 8
- Mar 15
- Mar 29



**ICE IN YOUR VEINS**  
THE MENTAL EDGE OF PITCHING

- ▶ BUILD BULLDOG CONFIDENCE ON THE MOUND
- ▶ CONQUER PRESSURE & OVERCOME ADVERSITY
- ▶ LEARN FROM LEGENDARY MLB & SOFTBALL PITCHERS
- ▶ CREATE YOUR WINNING ROUTINE

**Cost: \$15**  
INCLUDES THE BOOK!

**6TH-12TH GRADE**  
PROGRAM DATES: BASEBALL & SOFTBALL PITCHERS

**JANUARY 25**  
6:30PM FIELDHOUSE LOBBY

**MARCH 9**  
6-8PM HS SMALL AUDITORIUM

REGISTER BY 1/16. ATTEND THE FIRST SESSION ON 1/25 TO RECEIVE YOUR COPY OF THE BOOK AND WORKSHEETS. SECOND SESSION WILL BE ON 3/9.

SCAN TO REGISTER

# PLAYER BENCHMARKS

TBALL															
HITTING METRICS				BASERUNNING METRICS				THROWING METRICS				FIELDING METRICS			
	Beginner	Average	Advanced		Beginner	Average	Advanced		Beginner	Average	Advanced		Beginner	Average	Advanced
<b>Stance:</b>	Hands are in the correct position	Stands on the right side of the plate	Bat is up (not on shoulder) and not vertical or flat	<b>Basics:</b>	Understands they have to run after hitting the ball	Runs around bases with some guidance	Runs around bases without any guidance	<b>Form:</b>	Picks an arm they want to throw with	Throws overhand	Steps with the right foot when throwing	<b>Glove:</b>	Knows that glove goes on your hand	Knows which hand the glove goes on	Uses glove when trying to stop/catch a ball, squeezes glove when attempting to catch ball
<b>Swing:</b>	Swings in the correct direction	Swings towards the ball somewhat	Swings somewhat level and through the ball (doesn't	<b>1st Base:</b>	Knows where 1st base is	Runs to 1st base after hitting ball	Runs through 1st base after hitting ball	<b>Accuracy:</b>	Throws in the right direction	Throws to a teammate/target	Throws to the teammates glove	<b>Catching:</b>	Moves glove towards ball	Moves glove to make contact with ball	Can catch a throw/hit right to them
<b>Contact:</b>	Makes contact with the ball	Hits the ball consistently off the tee	Hits the ball squarely consistently off the tee	<b>2nd/3rd Base:</b>	Understands there is more than 1 base	Understands where 2nd and 3rd base are	Understands to run to each of these bases when someone else hits the ball	<b>Strength:</b>	Throws 15'	Throws 30'	Throws 45'+	<b>Positioning:</b>	Understands they must "take a turn" playing the field	Understands where to stand on a few positions	Understands getting the ball and throwing to 1st base
<b>Power:</b>	Hits the ball	Hits the ball to the Pitcher's mound	Hits the ball to the outfield	<b>Other:</b>	Understands they need to drop the bat after hitting the ball	Runs with effort to each base	Sprints when running bases, Rounds the bases in stride	<b>Game Smarts:</b>	Knows their dominant arm	Knows how to transfer ball from glove to hand	Knows spacial awareness and how much effort to throw with	<b>Game Smarts:</b>	Understands when the ball is hit, they must get it	Understands throwing the ball to 1st base	Understands they ar trying to throw the ball to 1st base before runner gets there

# PLAYER BENCHMARKS CONT...

COACH PITCH															
HITTING METRICS				BASERUNNING METRICS				THROWING METRICS				FIELDING METRICS			
	Beginner	Average	Advanced		Beginner	Average	Advanced		Beginner	Average	Advanced		Beginner	Average	Advanced
<b>Stance:</b>	Stands on correct side of plate with hands in correct position	Feet are pointed correctly, approx shoulder width apart, bat is not flat or vertical	Batter is always ready to hit with feet balanced and bat in good position	<b>Basics:</b>	Runs around bases without any guidance	Knows to look to coaches for help	Makes good decisions on when to go or stay	<b>Form:</b>	Steps with the right foot when throwing	"Shows the ball", doesn't throw it from ear	Follows through, doesn't fly open, stays "long"	<b>Glove:</b>	Knows which hand glove goes on	Tries to use pocket of glove to catch ball	Has glove (fingers) up while catching
<b>Swing:</b>	Swings somewhat level and through the ball (doesn't stop short)	Swings level, somewhat fluid begins to use hips and somewhat follows through	Level cut, uses hips, follows through, not out on front foot	<b>1st Base:</b>	Runs to 1st base without guidance after hitting ball every time	Knows to run through 1st base	Knows when to "round it" and when to run through 1st base	<b>Accuracy:</b>	Throws to the teammates glove	Can make a throw to 1st base from 2nd base	Can make a throw to 1st base from SS or 3rd base	<b>Catching:</b>	Can catch a grounder/pop fly if its hit right to them	Can catch a grounder/pop fly with some range	Understands a "backhand", gets in front of ball, gets under ball
<b>Contact:</b>	Makes occasional contact off coach pitch	Makes consistent contact off coach pitch	Rarely misses off coach pitch	<b>2nd/3rd Base:</b>	Knows to run to these bases after a teammate hits the ball	Knows when it's a force play	Knows to go half way on a fly, knows when to slide	<b>Strength:</b>	Throws 30'	Throws 45'	Throws 60'+	<b>Positioning:</b>	Understands he/she must move/shuffle to get ball	Anticipates the hit and moves towards ball	Will get body in front of the ball and knock it down if they don't catch it
<b>Power:</b>	Hits the ball to the Pitcher's Mound	Hits the ball to the outfield	Hits the ball to the outfield in the air	<b>Other:</b>	Runs with effort to each base	Sprints when running bases, Rounds the bases in stride	Knows how to slide around tag, Knows when to get lead after ball crosses plate	<b>Game Smarts:</b>	Knows how to transfer ball from glove to dominant hand	Knows spacial awareness and how much effort to throw with	Knows to point elbow/shoulder and correct tilt based on distance	<b>Game Smarts:</b>	Understands throwing the ball to 1st base	Understands they are trying to throw the ball to 1st base before the runner gets there	Understands double plays, doubling off runners on fly balls, when to tag vs force outs

# PLAYER BENCHMARKS CONT...

11U				
	In-House Avg.	Travel A	Travel AA	Travel AAA
	<i>2025 Team</i>	<i>2023 Team</i>	<i>2025 Team</i>	<i>2024 Team</i>
Hitting Velo	45.7mph	49.75mph	54.5mph	55.2mph
Run Time	3.76 sec	3.67 sec	3.70 sec	3.6 sec
Overhand Throw Velo	47mph	48.9mph	50.5mph	55.2mph

# PLAYER BENCHMARKS CONT...

	<u>Junior College</u>	<u>DIII</u>	<u>DII</u>	<u>DI</u>	<u>MLB</u>
Starting Pitcher Velocity	80-84	80-84mph	85-90mph	90-94mph+	94-96mph
Starting Pitcher # of Pitches	2	2	3	3-4	4
Relief Pitcher Velocity	85mph	84-86mph	86-90mph	93mph+	98mph+
Catcher Pop-time	2.1 or below	2.1 or below	2.0 or below	1.95 or below	2.0 or below
Outfielder Overhand Velo	78mph+	78mph+	82-86mph	85mph+	
60 yard dash (outfielder)	7.25 or below	7.25 or below	6.8 or below	6.8 or below	
Middle Infielder Overhand Velo	78mph+	78mph+	82mph+	85mph+	
60 yard dash (middle infielder)	7.25 or below	7.25 or below	6.9 or below	6.8 or below	

# PLAYER DEVELOPMENT PLAN

---

## BECKER 12U Navy Player Worksheet

NAME: \_\_\_\_\_ DATE: \_\_\_\_\_

What area of my game have I been working on this winter/spring?

---

Have I seen progress?

---

If not, what am I going to do going forward (be very specific)?

---

After several practices and our first games, here is what I want to work on going forward:

---

Here is my specific plan for this:

---

# PLAYER DEVELOPMENT PLAN CONT...

## Aysa

### Warm Up (Catch/Throw):

Focus Area:          A) Throwing Motion

- Plan:          1) Work on good front side (glove side) form whenever you play catch  
2) Play long toss to build up arm strength

### Infield/Ground Balls:

Focus Area:          A) Fielding w/Top Hand

- Plan: 1) Work on “alligator” top hand position for every ground ball  
2) Work on good smooth transfer and keep your feet moving through ball

Focus Area:          B) Footwork – Range/Speed

- Plan: 1) Agility Series/Fast Twitch Drills – do with purpose (to get better, its not necessarily about number of reps but quality of reps)

### Outfield/Fly Balls:

Focus Area:          A) Getting Under Ball

- Plan: 1) Continue working on dropping hip & sprinting to spot – don’t drift

### Hitting:

Focus Area:          A) Swing

- 1) Cues: Foot down w/toe in, Hands back, Knob to Catcher, Elbow positions
- 2) From contact thru extension
- 3) Do these drills:
  - a. Check swings – make sure palm up, palm down, front elbow up
  - b. Reverse Twists – make sure to go slow and do right
  - c. Normal swings off Tee or Soft-toss but hitting ball the other way

### Pitching:

Focus Area:          A) Change Up

- Plan: 1) Throw 20 change ups every bullpen session working on arm speed, release point, and location (should be down and out)

Focus Area:          B) Speed

- 1) Use weighted ball during bullpens
- 2) Do whip drill 2-3 times a week (can be during bullpens) – make sure to warm up first

# PRESEASON CHALLENGE

COMPLETE 1000 SWINGS, 1000  
CATCHES, AND 1000 THROWS.



FINISH THE CHALLENGE,  
EARN YOUR COOLING TOWEL,  
IMPROVE YOUR SKILLS AND BE  
READY FOR THE SEASON!

**DEADLINE: APRIL 1ST**





*Successful  
players  
will earn a  
custom  
cooling towel*



# 2026 BYBA SCHOLARSHIP

**\$500 SCHOLARSHIP FOR A LOCAL SENIOR**

## Eligibility:

-  Current High School Senior
-  Attending a 4-Year College
-  Minimum GPA 2.5
-  Must Have Played in Becker Youth Baseball

## Selection Criteria:

- Personal Essay
- Community Service / Youth Sports
- Academic Excellence
- Leadership Qualities
- Coach Recommendation
- Athletic Skills & Accomplishments

## How to Apply:

1. Print Application at [www.beckerbaseball.org](http://www.beckerbaseball.org)
2. Fill Out & Submit

**Deadline to Apply: April 10th**

**Winner Announced at Youth Night!**

For More Info Visit:

**[www.beckerbaseball.org](http://www.beckerbaseball.org)**

**Deadline  
April 10th**

**Things to look forward to:**

- **Miracle League**
- **Strike our Cancer May**  
7th 7:00 Pm
- **Parade**
- **Top Dog**
- **Movie in the Park**

BYBA Presents

# YOUTH

## Night

**PRIZES**

**RESCHEDULED**  
FOR  
**TUESDAY**  
**12**  
**MAY**

**RESCHEDULED**

**BECKER**

**VS**

**NORTH BRANCH**

**VARSAITY BASEBALL FIELD**

Please Park in Bus Garage Parking Lot

**GAME START TIME 5:00PM**

**CONCESSIONS**

• **PRIZES**

• **KIDS ACTIVITIES**

[www.beckerbaseball.org](http://www.beckerbaseball.org)



# BYBA SPONSORS

## SPONSORSHIP BENEFITS

The Becker Youth Baseball Association provides the opportunity to any child in the Becker Community to play baseball. We have over 350 kids participating in our program making it one of the largest youth programs in the area. The success and strength of our program relies on your support!

\*Tax Deductible. \*Giving Back to the Community

\*Easy and Affordable. \*Meaningful Donation

\*Increases Sales of your Business. \*Investing in our Youth



612- 481- 9521



Aaron  
Stupar

### Grand Slam

- Business banner along the fence
- Home page on website
- Advertised on all emails
- 2 social media posts a month
- Advertised at all events

**\$1000**

### Home Run

- Business banner along the fence
- Home page on website
- Advertised on all emails
- 1 social media posts a month

**\$500**

### Triple

- Business banner along the fence
- Sponsorship page on website
- 1 social media posts a month

**\$250**

### Double

- Business banner along the fence
- Sponsorship page on website

**\$100**

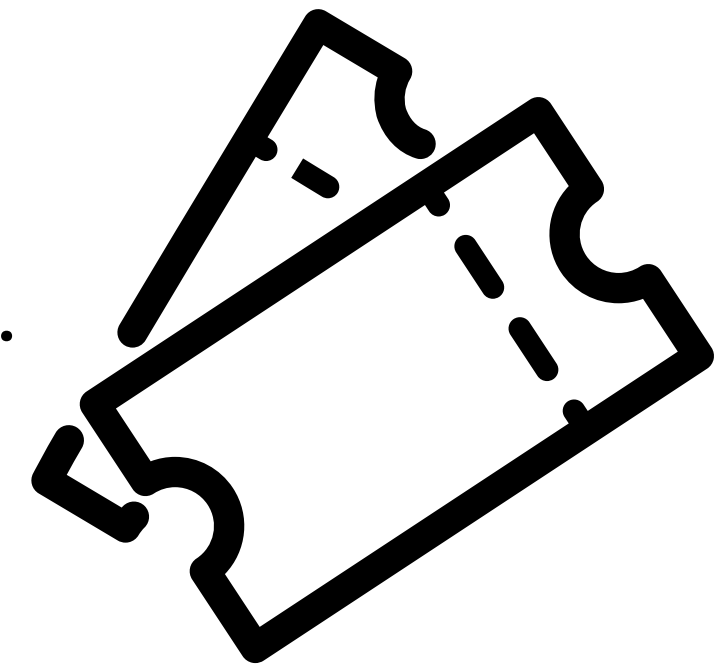
# FUNDRAISER

## RAFFLE TICKETS

Each player will be asked to sell 10 - \$10 Raffle Tickets

Raffle tickets will be handed out by coaches after Coaches meeting

- The team with the most tickets sold will have a team reward!
- Must be handed in to coaches by May 15th
- Winners announced June 6th during our youth Tournament.



### **Where will this money go?**

\*BAC Improvements: paved walkway, scoreboards, concrete pads under bleachers, Jr. ball dugouts, and longer-term project is lights.

# CMCBL

End-of-the-Year tournament for  
all ages end of July (locations  
TBD)

***We need Volunteers!***  
***concessions, field prep,***  
***front table, etc...sign up***  
***through DIBS***

## **BECKER BULLDOG TOURNAMENT 2026**

**JUNE 5-7**

**9AA  
10AA  
11AA  
12A  
14AA**

**JUNE 12-14**

**12AAA  
13AAA  
15A**



# What does it mean to be part of Becker Baseball

## ***RESPECT***

- For teammates, coaches, umpires, parents, opposing teams, and the game



## ***PRIDE***

- Be a leader with your strengths
- Work on your weaknesses – take ownership of your practices
- Be relentless in getting better

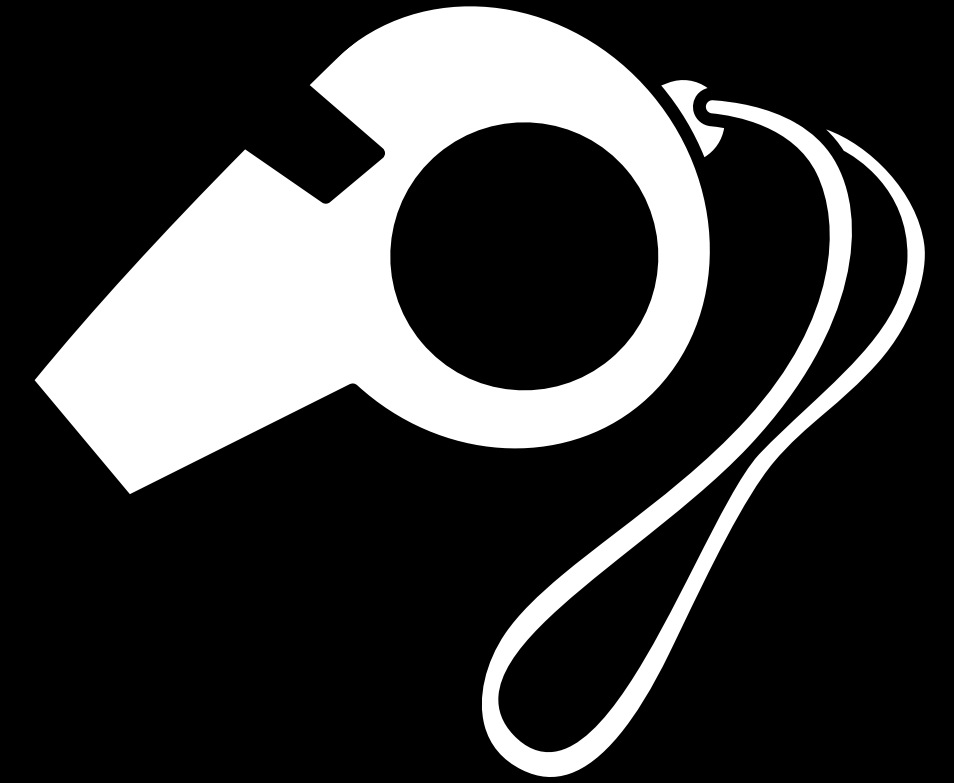
## ***COMMITMENT***

- Work hard for your coaches, for your team and for yourself
- Trust the process (coaching styles, evaluation process, etc...)
- Give back to younger players
- Participate in BYBA activities

# Coach

## *Expectations*

- Attend the Coaches Meeting TBD
- Complete background check & first aid training
- Develop each and every one of their players
  - My favorite coach never gave up on me, don't give up on any of your players
- Know that the BYBA is your #1 fan and will support you in any way we can (equipment, training, working with players/parents, etc...)



***“Coaching is unlocking a person’s potential to maximize their growth.” - John Whitmore***

# Parent

## *Expectations*

### ***Talking Points:***

\*All parents are required to sign the code of conduct during registration

- Good sportsmanship goes without saying in our program – there is a zero-tolerance policy depicted in our code of conduct
- Harness your competitive nature into positive energy
- Trust the process
- Empower your child to speak with their coach
- Use “what” instead of “why”

- Post game talk – proper timing, not using excuses (blame)
- Set goals with your child and work with them outside of practice/games to achieve those goals
- Allow Failure (bumper-proofing everything)
- Should I pay for lessons?
- Should they go to camps?

# Player

## *Expectations*

***What can you control?***

**Effort &  
Attitude**

- Be humble – can't stress this enough (coachable, work ethic, build teammates up, etc...)
- Come ready to work and learn how to compete – success is earned in practice
- Trust your coaches (funny drills, scorecards, pitching charts, etc...)

**Have FUN!**

# Board

## *Expectations*

- \*Our top priority is creating a safe, positive, and fun environment for every athlete.
- \*We will make decisions based on what is best for the program and its participants.
- \*We will provide resources and guidance to help everyone succeed.
- \*We value your feedback and are here to listen if concerns arise.



Date: April 11<sup>th</sup> 8:00am

Tentative :Monticello Community Center

**Contact Kevin Krenz if  
interested in Umpiring  
Kevin\_krenz@hotmail.com**

### ***Why Umpire?***

- There is a high demand for umpires.
- Great pay
- BYBA supports our umpires
- Learn more about the game you love.
- New appreciation for your officials that umpire your games.

# *Thank* **YOU!**

With your support and with the help with from the city we have been able to do many upgrades to the BAC.

## **Completed Projects:**

Moving the fence in on field 3, Added an extra batting cage, Added safety netting over the complex, Replaced the doors for the maintenance closet and bathrooms, Leveled and replaced the infield on field 4, Replaced the infield dirt on field 1-3, Added a roof to the dugout on the 1st base side on field 3, Concrete pad on field 4 dugouts

## **2026 Project goals:**

New scoreboards for field 1-4, Dugouts for Jr. Ball fields, Concrete slab under bleachers, Concrete slab for infield clay, Planting trees for shade by Jr. Ball fields and batter's eye on field 4, Replace Jr. Ball shed.

# *Questions?*



1<sup>st</sup> apparel window open March 1- 15  
2nd apparel window open April 15-30th

***beckerbaseball.org***