



PLAYER NAME

**BLAKE BENNER**

CLASS

**2025**

HANDEDNESS

**RHP**



**E-mail:**

bennerblake12@gmail.com

**Age:**

17



**State:**

United States, California

**High School:**

Clayton Valley Charter High



**Height:**

6' 0"

**Weight:**

160 lbs



**Coach:**

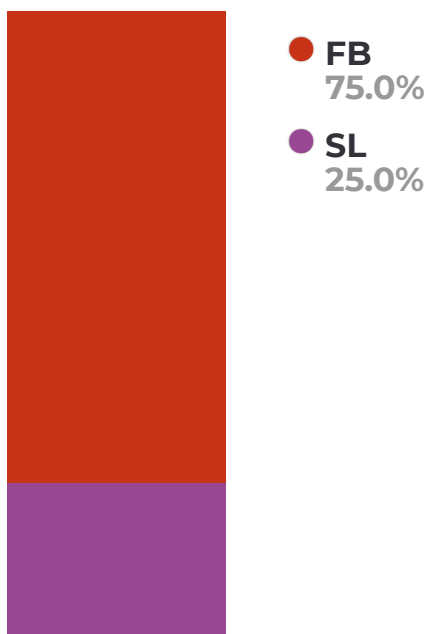
**Facility Name:**

-

**DATA**

| Pitch Type | Velo | Max. Velo | RPM  | Max. RPM | Vert. Break | Horz. Break | Spin Eff. | Cyro Deg. | Spin Dir. | Strike % |
|------------|------|-----------|------|----------|-------------|-------------|-----------|-----------|-----------|----------|
| FB         | 84.4 | 87.3      | 2378 | 2529     | 12.9        | 9.3         | 80.5%     | 36.0      | 01:24     | 21.4%    |
| SL         | 73.0 | 74.5      | 2442 | 2549     | 1.0         | -7.6        | 10.8%     | 84.0      | 09:35     | 0.0%     |

**PITCH TYPE FREQUENCY**



**PITCH SCORES**

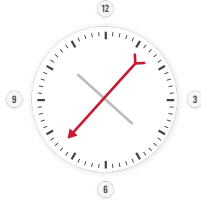
|    | High School | College | PRO  |
|----|-------------|---------|------|
| FB | 42.1        | 30.2    | 23.6 |
| SL | 44.2        | 31.9    | 23.2 |

**MOVEMENT**

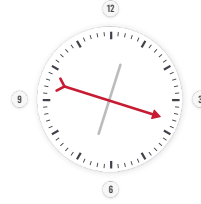
● **FB** ● **SL**

**SPIN DIRECTION**

*Arrow is pointing towards spin profile of each pitch (backspin, topspin, sidespin)*



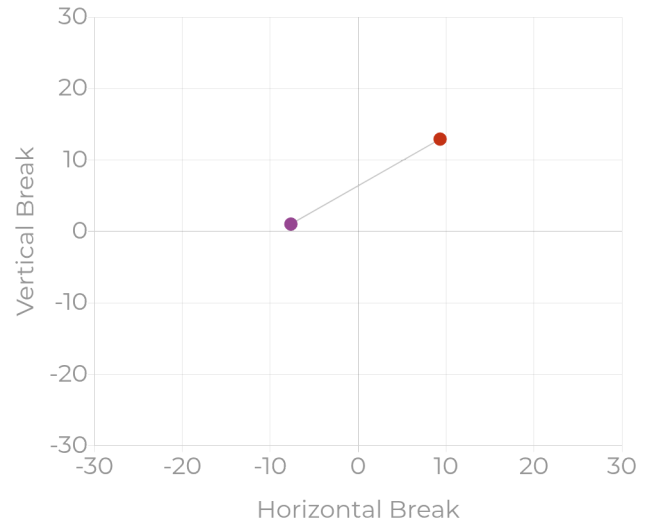
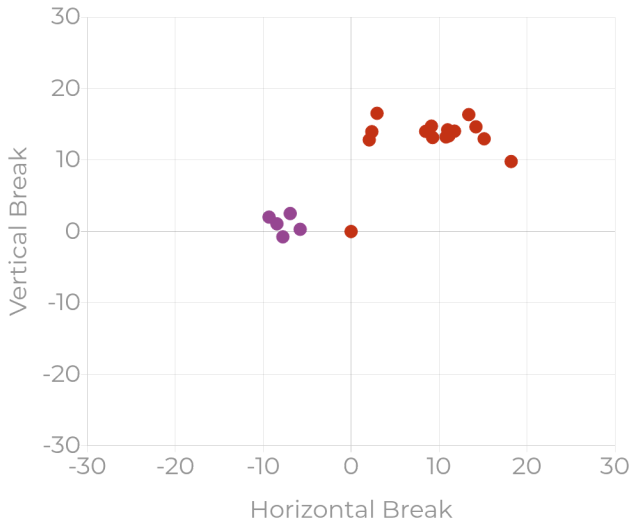
**FB 01:24**



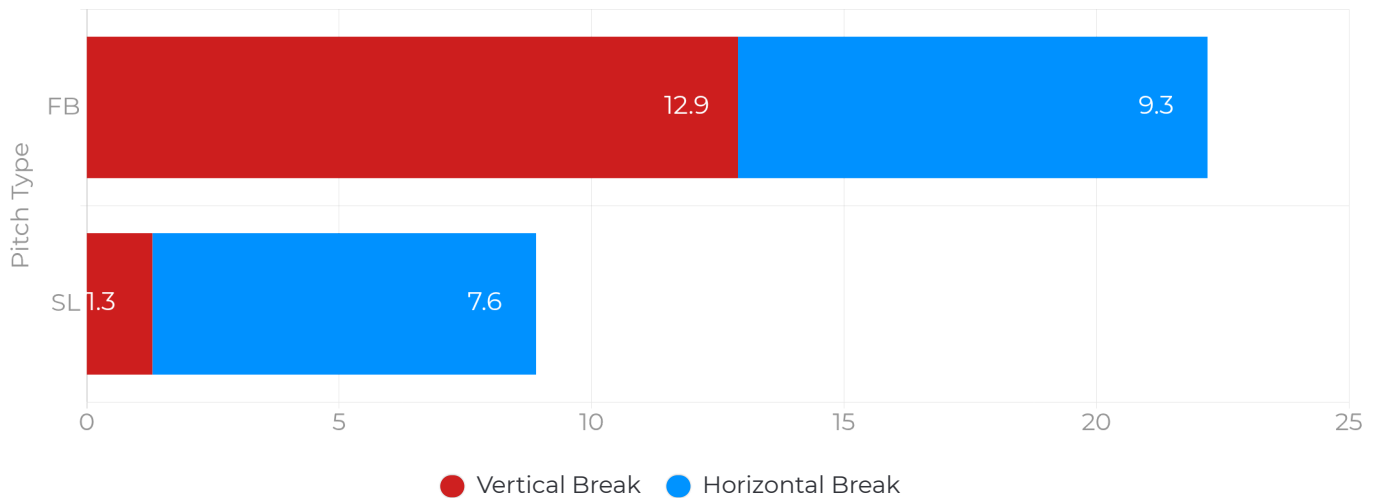
**SL 09:35**

**BREAK PLOT**

**BREAK AVERAGES**

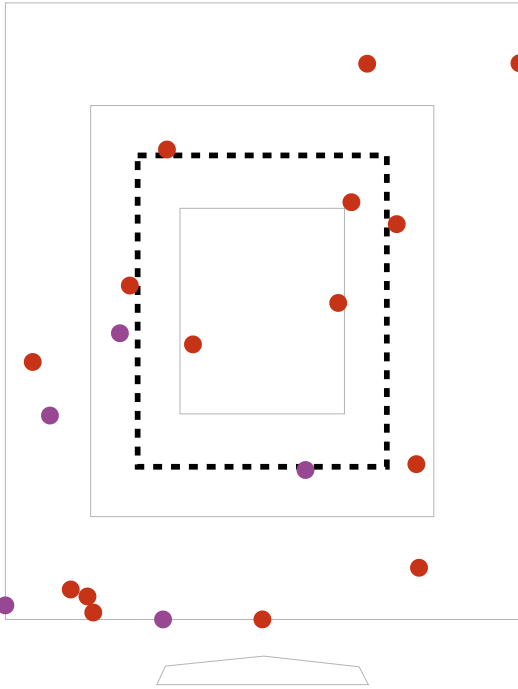


**TOTAL BREAK**



● FB ● SL

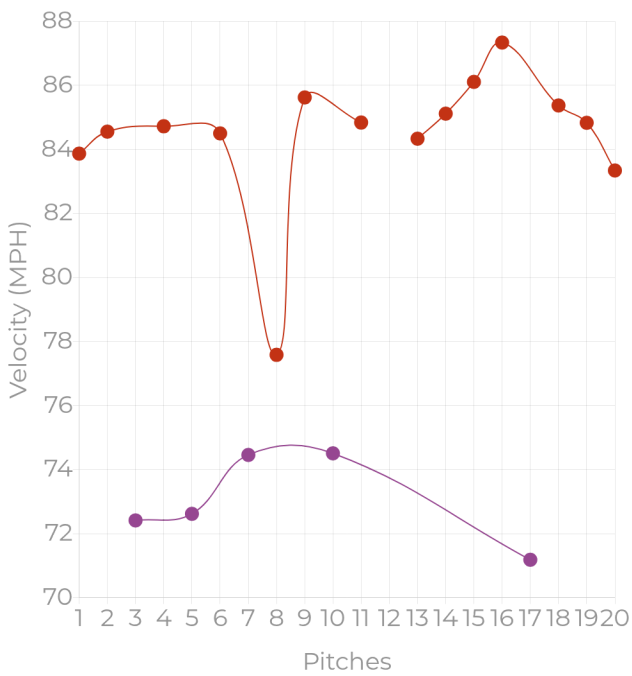
**STRIKE ZONE**



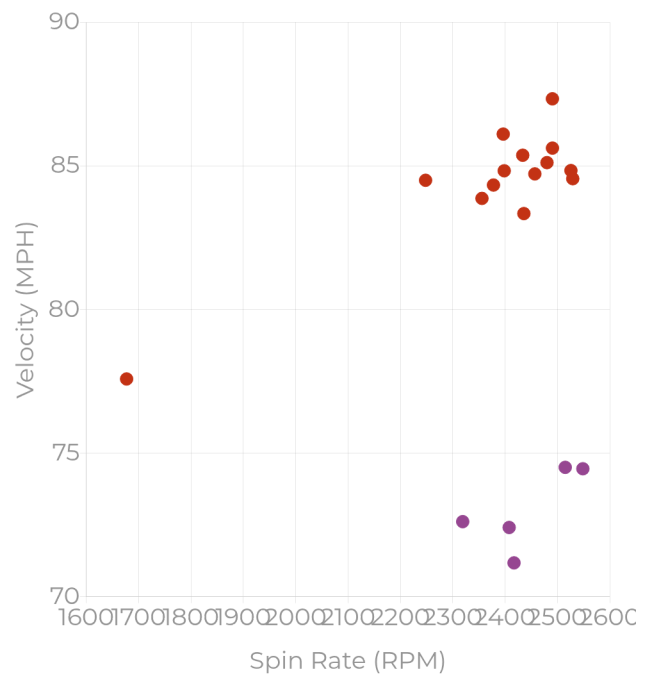
**STRIKE ZONE PERCENTAGE**

|           | Strike % | Heart % | Shadow % | Chase % | Waste % |
|-----------|----------|---------|----------|---------|---------|
| <b>FB</b> | 21.4     | 13.3    | 33.3     | 40.0    | 13.3    |
| <b>SL</b> | 0.0      | 0.0     | 40.0     | 20.0    | 40.0    |

**VELO DISTRIBUTION**



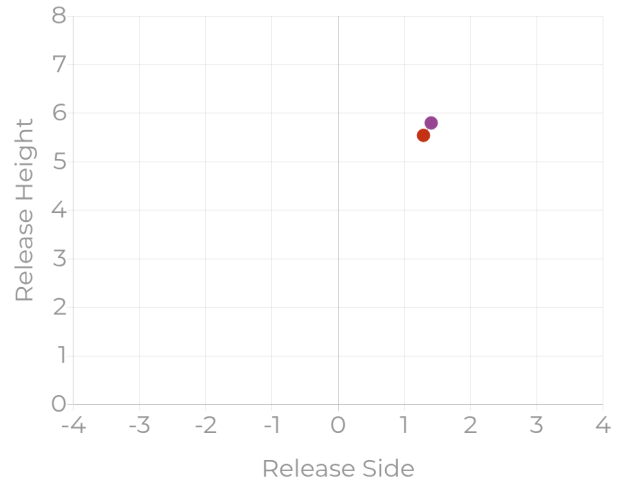
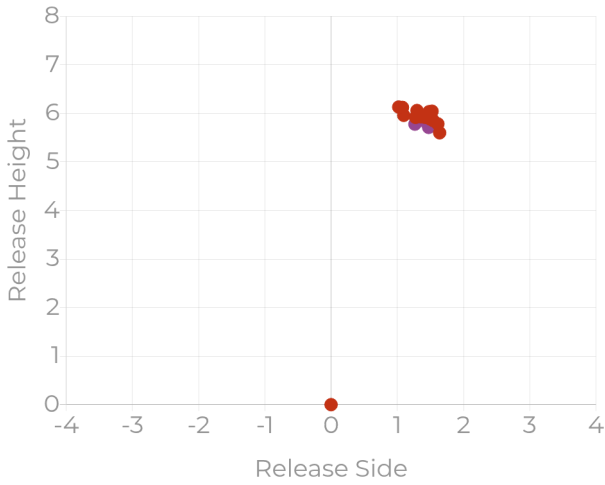
**SPIN RATE VS VELO**



● **FB** ● **SL**

**RELEASE WINDOW**

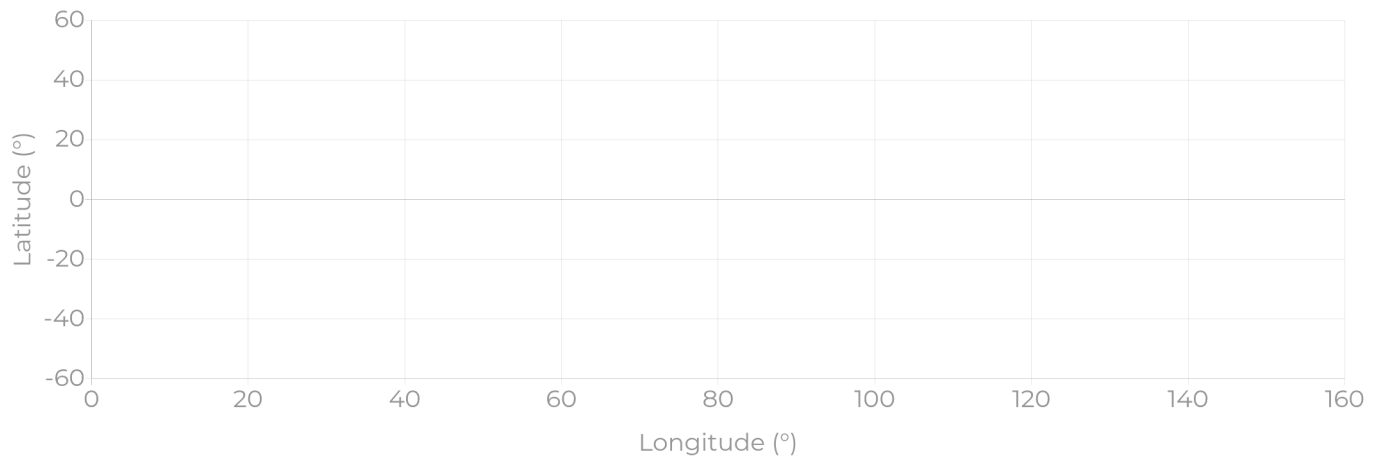
**RELEASE AVERAGES**



**RELEASE DATA**

| Pitch Type | Release Angle | Horizontal Angle | Release Height | Release Side |
|------------|---------------|------------------|----------------|--------------|
| <b>FB</b>  | -1.3          | -2.2             | 5.5            | 1.3          |
| <b>SL</b>  | 0.0           | -1.8             | 5.8            | 1.4          |

**SEAM ORIENTATION**



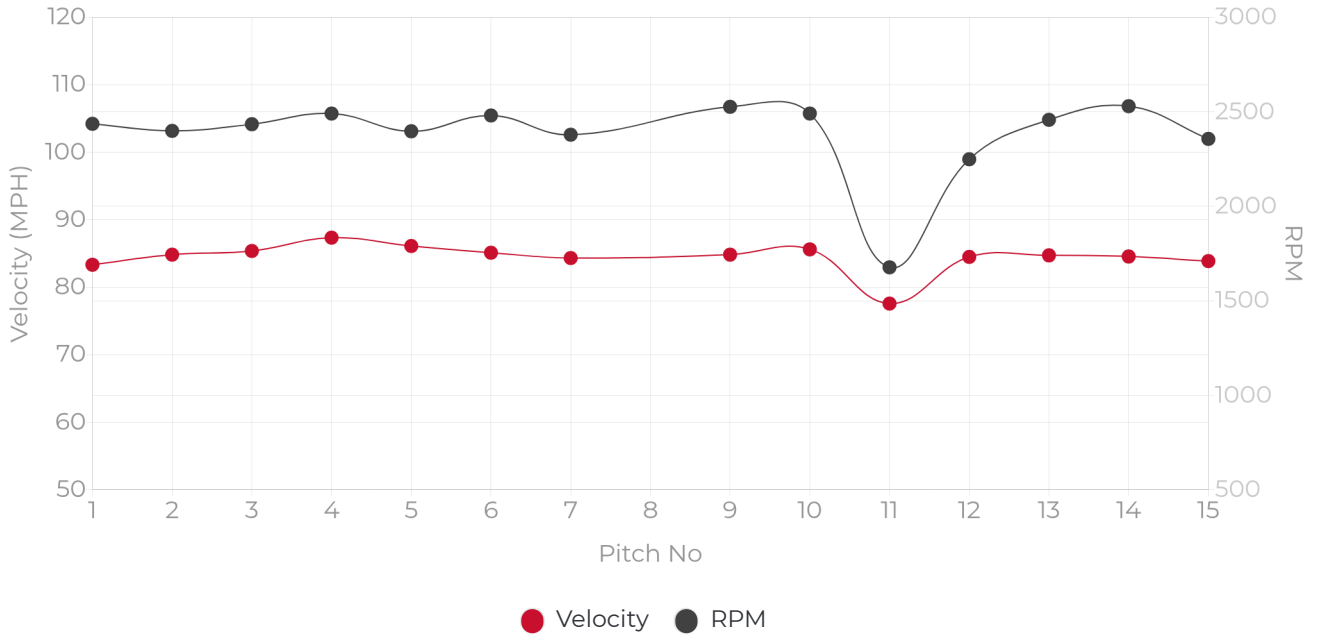
**PITCH BREAKDOWNS - FASTBALL**

All data points shown are averages unless otherwise specified.

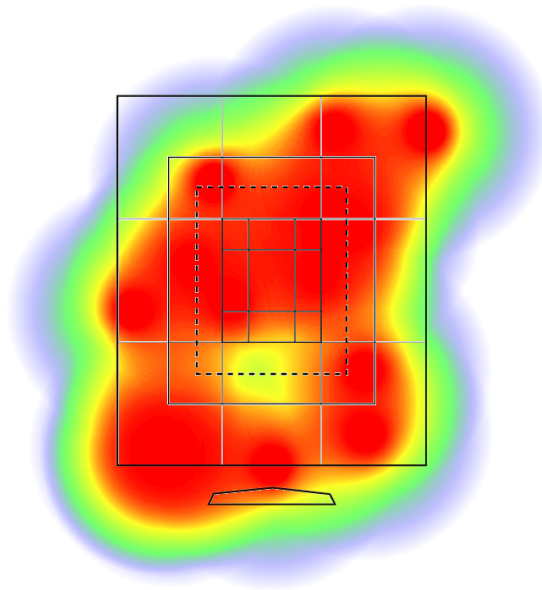
| Count | Velo | Max. Velo | Max. RPM | True Spin | Spin Eff.% | Gyro Deg. | VB   | HB  | R. Height | R. Side | R. Angle | H. Angle |
|-------|------|-----------|----------|-----------|------------|-----------|------|-----|-----------|---------|----------|----------|
| 15    | 84.4 | 87.3      | 2378     | 1903      | 80.5%      | 36.0      | 12.9 | 9.3 | 5.5       | 1.3     | -1.3     | -2.2     |

**PERFORMANCE TRACKING - FB**

Plots will only be shown for pitches that recorded data.



**STRIKE ZONE HEATMAP - FB**



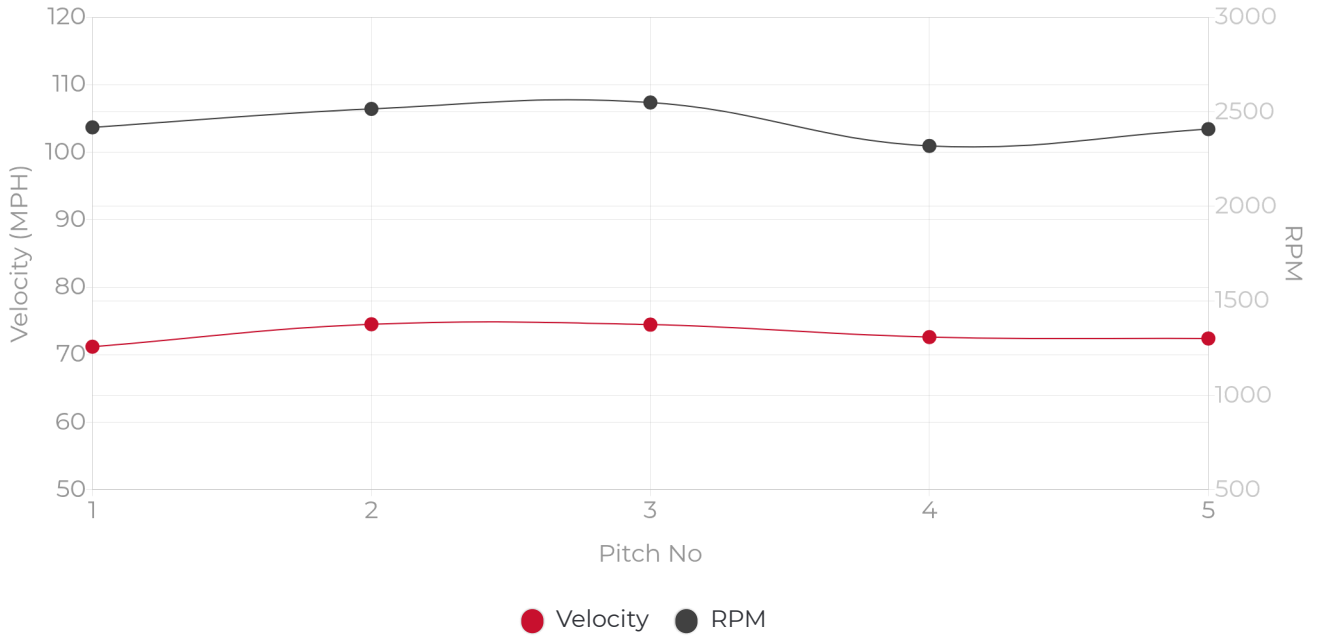
**PITCH BREAKDOWNS - SLIDER**

All data points shown are averages unless otherwise specified.

| Count | Velo | Max. Velo | Max. RPM | True Spin | Spin Eff.% | Gyro Deg. | VB  | HB   | R. Height | R. Side | R. Angle | H. Angle |
|-------|------|-----------|----------|-----------|------------|-----------|-----|------|-----------|---------|----------|----------|
| 5     | 73.0 | 74.5      | 2442     | 263       | 10.8%      | 84.0      | 1.0 | -7.6 | 5.8       | 1.4     | 0.0      | -1.8     |

**PERFORMANCE TRACKING - SL**

Plots will only be shown for pitches that recorded data.



**STRIKE ZONE HEATMAP - SL**



## RELEASE HEIGHT

---

Vertical height above the ground at the point the pitch is released.

## RELEASE SIDE

---

The distance from the center of the rubber at the point of release from the pitcher's POV where the right is a positive number and the left is a negative number.

## RELEASE ANGLE

---

Vertical angle of the ball leaving the pitchers hand where up is positive (higher pitches or pitches with a large amount of negative vertical movement) and a downward angle being negative (pitches lower in the zone or traditionally higher positive vertical break).

## HORIZONTAL ANGLE

---

The Directional degree when the ball leaves the pitchers hand where to the left is negative and the right is positive from the Pitcher's POV. Traditionally, all RH P's have a negative angle and LHP's have a positive angle to varying degrees.

## STRIKE ZONE BREAKDOWN

---

**Heart of Plate:** Batter wants to Swing, pitcher wants him to Take

**Shadow Zone:** 50/50 on pitch called either way

**Chase Region:** Batter wants to Take, pitcher wants the Swing

**Waste Area:** 1+ foot off edge of strike zone

