

ELITE SPORTS SPONSORSHIP AND COMARKETING OPPORTUNITY



ABOUT ELITE SPORTS

Learn more about the fastest growing and #2 rated sports academy in Sarasota and Manatee Counties



SPONSORSHIP PROGRAM

Support youth athletes and contribute to your local community. Elite offers several sponsorship levels.



COMARKETING AND COBRANDING

Participate in exciting co-marketing and co-branding opportunities including the Elite Rewards card driving more traffic to your business

WORK HARD. DREAM BIG. BE ELITE





ABOUT ELITE SPORTS



350

**YOUTH ATHLETES
AND GROWING**



1350

**FAMILY MEMBERS
AND GROWING**



#2

**RANKED SPORTS CLUB IN
SARASOTA/MANATEE COUNTY***



#1

**FASTEST GROWING SPORTS ACADEMY
IN SARASOTA/MANATEE COUNTY**



2

**ESPN
APPEARANCES**



50K

**LOCAL SOCIAL IMPRESSIONS
PER MONTH AND GROWING**

WORK HARD. DREAM BIG. BE ELITE





MISSION AND CORE VALUES

DEVELOPING LEADERS OF TOMORROW

Our mission is to develop our youth athletes into community leaders of tomorrow, making the most of valuable teaching opportunities through sports, education and core values.



CORE VALUES



COMPASSION

Temporarily suspending judgment so that you can appreciate others' perspectives or situations when they are different from your own. To be compassionate you need to be genuinely concerned about the other person or people's needs.



MINDFULNESS

To be mindful is to take care of ourselves, each other, and the space we share. Mindfulness is at the core of what motivates us, why we choose our passions, and why we love them so much. Being mindful is not always easy, but the reward of slowing down and paying attention is worth the effort.



TEAMWORK

The strength of our team does not only lie in our combined experience and expertise but our ability to trust each other, no matter what the circumstances. We know that our best result is not produced by individuals, but by working as a team and supporting each other at all times.



INTEGRITY

A person with integrity demonstrates sound moral and ethical principles and does the right thing, no matter who's watching. Having integrity means that you live in accordance to your deepest values and you always keep your word.



GRATITUDE

Cultivate the habit of being grateful for every good thing that comes to you, and to give thanks continuously. And because all things have contributed to your advancement, you should include all things in your gratitude.

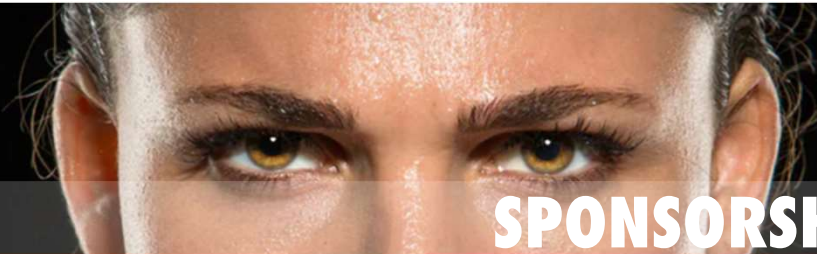


RESPECT

Treat everyone as you would treat yourself. Respect begins within oneself and stems from dignity, a basic human right. Dignity comes from a place of value, worthiness and sense of self-respect.

WORK HARD. DREAM BIG. BE ELITE





SPONSORSHIP LEVELS

Our sponsorship opportunities are appealing as your business will enjoy a return on investment while supporting the local community. With our customer base of over 1300 household members, we can offer unique programs to boost sales, offer tax breaks and reach 50+ Sarasota-Manatee social media groups of 1M+ members. We also offer monthly scheduled payments to match expenses with cash flow benefits realized through our program.



\$10k+

CHAMPION SPONSOR

Our Champion sponsors are recognized as making a community impact with their contribution. These sponsors will enjoy many benefits highlighted by Elite Days and Elite Nights driving significant traffic to your business. These sponsors will often realize a net cash flow benefit.



\$5k

GOLD SPONSOR

Our Gold sponsors are recognized for making a significant impact to our sport club. These sponsors receive many marketing benefits and are ideal for sponsors that don't wish to participate in Elite Days and Elite Nights



\$3k

SILVER SPONSOR

Our silver sponsors are ideal for program supporters that would like a base level of marketing and exposure on a budget. The Silver sponsors are recognized for helping individual teams.



\$1k

BRONZE SPONSOR

Our Bronze sponsors are ideal for those that would like to make an impact in youth sports without needing marketing benefits. Bronze sponsors are recognized for helping teams or an individual.

WORK HARD. DREAM BIG. BE ELITE





PROGRAM BENEFITS



SPONSOR BENEFIT	CHAMPION	GOLD	SILVER	BRONZE
Elite Day/Nights @ Business	✓			
Co-Marketing	✓			
Tournament Marketing Rights*	✓			
Elite Rewards Card Logo	✓			
Monthly Advertisement	✓	✓		
Facility Banner	✓	✓	✓	
Website Homepage Logo	✓	✓	✓	✓
Social Media Spots and Features	✓	✓	✓	✓

*Champion Sponsors will be permitted to market at Elite Tournaments beginning in late 2025, early 2026

WORK HARD. DREAM BIG. BE ELITE





ELITE PASS AND ELITE EVENTS



(back)

THE ELITE REWARDS CARD

Introducing the Elite Rewards Card offering 5/10/20% discounts at your establishment to our members. Offering these discounts is a great way to keep our customer base coming back to your establishment and spreading the word to other families about the great products you offer.

Champion sponsors will receive logo placement on our rewards card as a consistent reminder of brand loyalty for our club members. All sponsors are welcomed to join our Elite Rewards program, however higher sponsorship levels will enjoy more benefits including marketing spots of reward apps for your business and special offers.

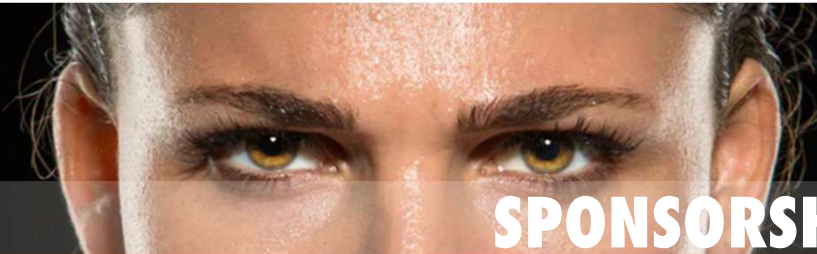


ELITE EVENTS

ELITE DAYS AND ELITE NIGHTS

With the base of 1300+ athletes and related family members, its time to turn a day or night at your establishment a busy one. Our team will work to co-market and co-brand with new and innovative events driving traffic to your business and providing fun for our families. We will plan a minimum of two events a year. However, there are many creative opportunities to drive traffic to your business or products year-round! These events will be planned and executed in a collaboration including your vision for the event.





SPONSORSHIP GARB

Framed Posters

Framed Jerseys



CHAMPION LEVEL SPONSOR OF YOUTH SPORTS

Company ABC Proudly supports Elite Youth Sports in Sarasota and Manatee county bringing championship level teams and sports to the Sarasota area.

Company ABC has awarded \$10K in scholarship and equipment funds representing the highest level of sponsorship available making Company a gamechanger in local youth sports and leadership programs



Facility Banner



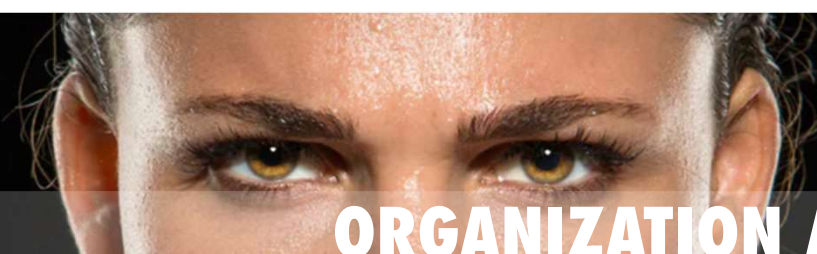
CHAMPION LEVEL SPONSOR OF YOUTH SPORTS

2025



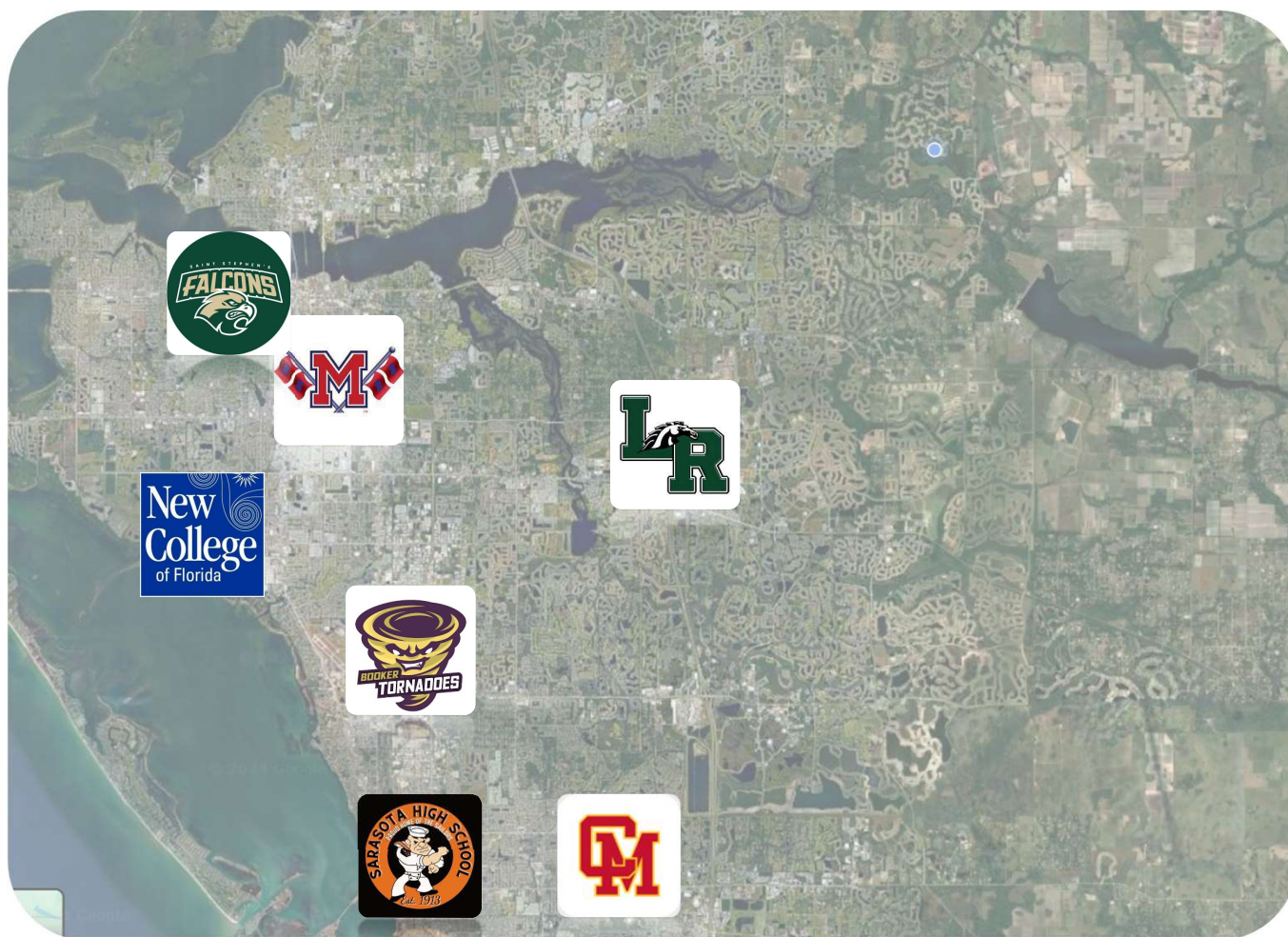
WORK HARD. DREAM BIG. BE ELITE





ORGANIZATION AFFILIATES

Elite athletes are represented at nearly every elementary, middle and high school in Sarasota and Manatee counties. In addition to these athletes, Elite Sports also has high school volleyball coaches at many local area high schools as well as several organization relationships. Our brand and sponsors enjoy significant exposure in Sarasota-Manatee counties and beyond during out-of-state tournament season.

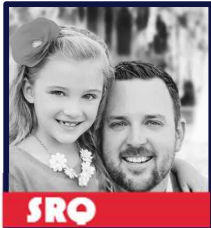


WORK HARD. DREAM BIG. BE ELITE





ELITE EXECUTIVE & ADVISORY BOARD



Justin Bash
BOD Chairman,
Elite Sports



Nick Behrens
Club Director,
Elite Volleyball PA



Joe Hammond
BOD Member
Elite Sports



Michael Boling
BOD Member
Elite Sports



Tiago Campos
Assoc AD,
Elite Volleyball PA



Allan Knight
Club Director,
Elite - SRQ



Nancy Hopper
Managing Partner,
Elite - SRQ



Frank Caisane
Sr. Director,
Elite Sports



Daris Rodriguez
Assoc AD,
Elite Volleyball PA



USAVolleyball

Aaron Shepardson
Advisory Board,
Elite Sports



Jennifer Ierulli
Advisory Board,
Elite Sports

WORK HARD. DREAM BIG. BE ELITE





QUESTIONS AND NEXT STEPS

TO DONATE OR ASK QUESTIONS PLEASE CONTACT OUR TEAM AT ADMIN@ELITEVBALL.com OR CALL 1-833-4VOLLEY

QUESTION	ANSWER
What is the effective cost considering corporate tax rates	Corporate tax rates are 21%. Assuming the same marginal tax rate, a \$10k donation would reduce tax liability by ~\$2k for a net cost ~\$8k cost
What is the estimated revenue lift from participating in this program	Our \$10k sponsorship is estimated to lift revenue \$30k-150k depending on industry, location and participation in our elite days/elite nights. Our \$5k sponsorship level is estimated to experience a \$10k-\$40k revenue uplift. Our \$1k-3k sponsorships are estimated to experience a \$1k to \$10k revenue uplift.
What are Elite Days and Elite Nights	Elite will develop a focused program with visits to your business with our household membership base of 1,300+ members
What recognition/items will we receive to feature in our business	Champion sponsors will receive framed jerseys and certificates to hang in their establishments highlighting the community impact. Other sponsors will receive certificates.
Are you able to provide in-depth details related to this program	Yes. Call or email us per the contact information above and we will schedule time to review our program with you.

WORK HARD. DREAM BIG. BE ELITE

