

# OHIO TENNIS COACHES

Online Rules Interpretation Meeting  
2025-26 School Year



**Presented by:**

**John Kronour: Sports Administrator**  
**Mike McGee: Rules Interpreter, Head Official**

# Eligibility for “Credit”

## OHSAA REGULATIONS STIPULATE THAT:

The head coach, an assistant high school coach, or the school’s athletic director are the only ones who may receive credit for viewing this mandatory rules meeting presentation.

This presentation must be viewed by an appropriate individual for the school team/individual to participate in the OHSAA tournament.

**PLEASE READ BEFORE ADVANCING**

- At the end of viewing this presentation, please make sure you click on submit to give you and your school credit for completing the Boys tennis rules interpretation meeting.
- Your credit for completing the rules meeting can be reviewed on FinalForms.

# IMPORTANT CONTACT INFORMATION



JOHN KRONOUR  
OHSAA Sport Administrator  
jkronour@ohsaa.org



MIKE MCGEE  
Rules Interpreter / State Tournament Assigner  
mmcgee0225@gmail.com





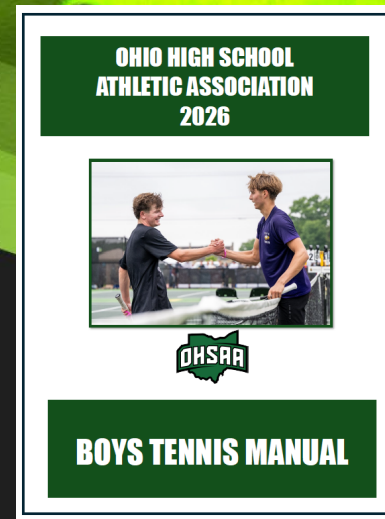
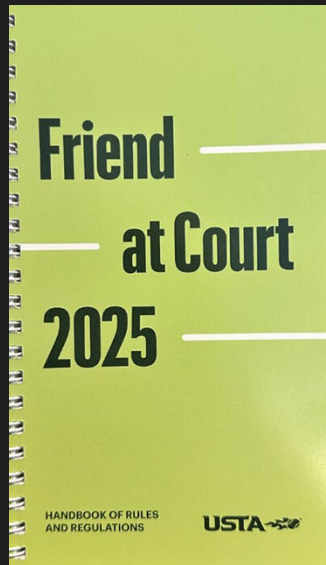
# **OHSAA MISSION STATEMENT**

**THE OHSAA'S MISSION IS TO SERVE OUR MEMBER  
SCHOOLS AND ENRICH INTERSCHOLASTIC  
OPPORTUNITIES FOR STUDENTS.**

**STUDENTS WHO PARTICIPATE IN INTERSCHOLASTIC  
ATHLETICS AT AN OHSAA MEMBER SCHOOL MUST BE  
ELIGIBLE IN ALL RESPECTS.**

# Coach's Reference Manuals

Boys Tennis Manual / OHSAA and Coaches Manual available on OHSAA website under Tennis-Boys, <https://ohsaa.org/sports/boystennis>



The USTA Friend at Court (2025) is available at the web address below. This is a pdf version of the book:

[www.usta.com/content/dam/usta/2025-pdfs/2025-friend-at-court.pdf](http://www.usta.com/content/dam/usta/2025-pdfs/2025-friend-at-court.pdf)

# Coaching Requirements

## Coaches Must Have Pupil Activity Permit

All Coaches of Middle School/Jr. High and High School teams **MUST** have a Pupil Activity Permit issued by the Ohio Department of Education to coach in the state of Ohio. The application process can begin here:

<http://education.ohio.gov/Topics/Teaching/Licensure/Audiences/Coaching-Permits>. This application requires:

- 1) completion of a background check
- 2) completion of the NFHS “Fundamentals of Coaching” course
- 3) completion of CPR training through a course approved by your school or district
- 4) completion of First Aid Coaches requirements
- 5) completion of Concussion training
- 6) completion of Sudden Cardiac Arrest training



The OHSAA has partnered with **Coaches' Tool Chest** as a one stop shop for coaches to obtain certifications. The program helps ensure that coaches have the knowledge they need to best serve their student-athletes and to position those athletes for success in sport, and in life. For administrators, it provides an efficient, simple method of ensuring all of the school coaches are compliant with their PAP requirements. More than just meeting the legally mandated minimum requirements, the program adds in a professional development piece as well. For more information, please check out online [HERE](#).

## NON-APPROVED COACHES

- NO INDIVIDUAL WHO HAS NOT BEEN APPROVED BY THE BOARD OF EDUCATION OR SIMILAR GOVERNING BODY MAY SERVE AS A COACH.
- ALL COACHES MUST BE CERTIFIED THROUGH THE OHIO DEPARTMENT OF EDUCATION
- Players, spectators, or parents **CANNOT** coach student-athletes.



**NO ONE** (except another team member) may warm-up a student or participate in pre-contests drills, unless that individual has been properly approved as the school coach and ODE certified!

CONCUSSION TRAINING IS PART OF WHAT IS REQUIRED TO OBTAIN YOUR PUPIL ACTIVITY PERMIT.

# CONCUSSION MANAGEMENT

REFER TO THE COACHES MANUAL FOR INFORMATION REGARDING CONCUSSION PROTOCOL.

- If a student is removed from practice or competition due to a suspected concussion. The coach or official who removes the student shall not permit the student to return to practice and/or competition **on the same day the student is removed.**
- **Two conditions must be satisfied for the student to return to practice/competition.**

The infographic features a background illustration of a town with houses, trees, and a church. On the left, there is a circular logo with a white background and a black border containing the text "HEADS UP". To the right of the logo, the text "CONCUSSION in SPORTS" is displayed in a large, bold, black font. Below this, a black banner contains the text "WHEN IN DOUBT, >> SIT THEM OUT!" in white. On the right side, a large black circle contains the word "STATISTICS" at the top, followed by the text "MORE THAN 170,000 KIDS AND TEENS are treated in an emergency department each year for sports- or recreation-related traumatic brain injuries, including concussions." in white.

**HEADS UP**

**CONCUSSION**  
*in* **SPORTS**

WHEN IN DOUBT,  
**>> SIT THEM OUT!**

STATISTICS

**MORE THAN 170,000 KIDS AND TEENS**  
are treated in an emergency department each year for sports- or recreation-related traumatic brain injuries, including concussions.

# Sports Regulation 7: Instruction *Outside* School Season



- Permitted in individual and/or group setting at any time from school or non-school coach
- School Coach **Cannot** make the instruction mandatory or penalize a player for not attending out-of-season instruction!

# 2026 Boys Tennis Season Important Dates

March 9, 2026: Coaching / Tryouts Begin

March 27, 2026: Season Begins

June 6, 2026: Season Ends

May 3, 2026:  
Non-Interscholastic Date

April 26, 2026:  
Tournament Entries due by Noon

May 3, 2026:  
Tournament Draw Meeting 2pm

May 11-16, 2026:  
Sectional Tournaments

May 18-23, 2026:  
District Tournaments



May 28-29, Lindner Family Tennis Center - Mason



# OHSAA Rules Affecting Tennis

## Non-Interscholastic Rule

From the OHSAA's Sports' Regulations & Bylaws

There is a date on which players may NOT participate in Non-School tennis (non-interscholastic) competitions / events during their season (once the student has participated in a school contest) without receiving the proper pre-approved waiver. This date is.....

**April 13, 2026**

No student who has participated in a non-school event after the non-interscholastic date (April 13, 2026) is eligible to participate in the 2026 OHSAA State Boys Tennis Tournament UNLESS THE PROPER SIGNED WAIVER HAS BEEN OBTAINED.

**Remind...Remind and REMIND your Players!  
Don't Put Their Eligibility in Jeopardy**



## OHSAA Rules Affecting Tennis

### Non-Interscholastic Rule

From the OHSAA's Sports' Regulations & Bylaws

Students may participate in two non-interscholastic contests/events while a member of the school tennis team **provided** the student has received *an approved waiver from the OHSAA executive director's office prior to the non-interscholastic participation.*

The non-interscholastic contest/event must have a clearly defined start and end date...and must conclude within 7 days of the start date.

No waiver will be granted for participation in any non- interscholastic contest/event that occurs after May 3, 2026. Thus, the non-school contest must end May 3, 2026.

# OHSAA Rules Affecting Tennis

## SCHOOL REPRESENTATIVE

From the OHSAA's Sports' Regulations & Bylaws

No Team or Individual will be permitted to participate in an interscholastic contest unless accompanied by a coach or a person authorized by the Board of Education or similar governing body.

Ensure that your coaching permit is updated and valid (including all assistant coaches).

All Interscholastic tennis players **must be accompanied** by an appropriate person authorized by the member school's governing board.

Interscholastic tennis coaches must have the appropriate ODE credential(s) in order to coach.

**NO** individual (e.g. personal/private/club coach) may coach an OHSAA student-athlete during the interscholastic season in a school contest if not school board approved to coach at the school and properly certified.

# OHSAA Rules Affecting Tennis

## DUAL MATCH

From the OHSAA's Sports' Regulations & Bylaws

Scrimmage: one (1) permitted. Must be BEFORE first regular season match.

### Regular Season Contests:

22 permitted High School – (does not include OTCA Team tournament matches)

16 permitted Grades 7-8

### Out of State Travel:

Bordering States: no restrictions

#### Non-Bordering States:

Travel to non-bordering states for competition now requires OHSAA office approval prior to travel.

It is up to the school district / system to determine if school time can be missed.



# OHSAA Rules Affecting Tennis

## DUAL MATCH

From the OHSAA's Sports' Regulations & Bylaws

A school *dual contest* shall consist of **three individual singles participants and two doubles teams**, which would indicate seven (7) different individuals participate. You should not be playing all doubles, or all singles matches. Follow OHSAA contest protocol when participating in a dual contest.

***NO STUDENT SHALL PARTICIPATE IN BOTH A SINGLES AND A DOUBLES MATCH IN THE SAME CONTEST.***

A contest is won when a team reaches three points, but a contest does not conclude when a team reaches three points!

Unless darkness or weather or some other circumstance interrupts a contest, permit students to complete their matches.

**Do not simply conclude the contest when a team reaches 3 points.**

# OHSAA Rules Affecting Tennis

## DUAL MATCH

From the OHSAA's Sports' Regulations & Bylaws

# Contest Limitations

No member of a school team may participate in more than **\*three matches per day**. No member of a school team may participate in more than 22 school contests (16 contest for grades 7-8).

PLEASE REVIEW THE 2025-26 TENNIS REGULATIONS for how to determine when a contests counts as more than one contest when participating in a conference/league/invitational tournament.

**\*PRO SETS-FIVE, 8 GAME PRO SETS PERMITTED PER DAY-OR A COMBINATION OF NO MORE THAN THREE-8 GAME PRO SETS AND ONE TWO OF THREE SET MATCHES-TOURNAMENTS ONLY**

- **Match Tiebreaker (first to 10)**, in lieu of playing a third set is permitted, *when a contest has already been decided (one team has 3 points) and BOTH coaches must agree.*

# OHSAA Rules Affecting Tennis

## UNIFORMS

From the OHSAA's Sports' Regulations & Bylaws

- All team members must wear an appropriate school uniform or proper tennis attire, *preferably in school colors*.
- Proper tennis attire is defined as clothing specifically manufactured for tennis wear. Any lettering or pictures on clothing and/or headgear must pertain to the school name or logo (e.g. mascot), the student's name, or be patriotic in nature (e.g. the United States flag). Pictures of a tennis racquet or tennis ball may also appear on the tennis uniform.  
**No phrases, quotes or "slogans" shall be permitted.** Manufacturer's names or logos are permitted provided they do not exceed 1.5 inches in height.
- "Doubles" team players shall wear school color tops. They do not have to be the same top.
- Any visible undergarments that extend below the uniform shorts, dress or skirt shall be the same color of the shorts, dress or skirt or represent school colors or, be all white or all black or all gray.
- *If a uniform dress is not of the appropriate length...please have the student wear an appropriate undergarment.*
- Hats/ visors fall under uniform regulations- Any lettering or pictures on headgear must pertain to the school name or emblem, the student's name, or be patriotic in nature (e.g. the United States flag). This is the same regulation that applies to the uniform. No restriction can be placed on headgear worn for religious purposes
- This dress code shall be enforced by the home coach or tournament director.
- Any clothing deemed to be "reflective" or "distractive" in nature shall not be permitted.
- Failure to comply will result in a player being denied the opportunity to participate.

# OHSAA Rules Affecting Tennis

## Inclement Weather

From the OHSAA's Sports' Regulations & Bylaws

- Administering a safe policy for students, coaches and spectators is a shared Responsibility
- Lightning and Inclement Weather Policies affect not only contests but practices as well
- Proactive planning-assign staff to monitor local weather conditions before and during practices/contests
- Develop an Evacuation Plan, including nearby safe area(s) (e.g. gym or library...if necessary, school bus) and determine the amount of time needed to get individuals to this area(s)
- **THERE IS STILL A 30 MINUTE RULE---WHEN THUNDER IS HEARD OR LIGHTNING SEEN SUSPEND PLAY FOR AT LEAST 30 MINUTES...ONCE PLAY HAS BEEN SUSPENDED, WAIT AT LEAST 30 MINUTES AFTER LAST THUNDER HEARD OR LIGHTNING WITNESSED**



# OHSAA Rules Affecting Tennis

## Heat, Cold, Wind

From the OHSAA's Sports' Regulations & Bylaws



- Heat and Humidity may be issues during the early part of the boy's tennis season. The OHSAA General Sports Regulations address Exertional Heat Illness Prevention.
- STRESS to participants the importance of proper hydration during the day(s) leading up to competition. This should become common practice.
- Schools should have unlimited amounts of water and the Appropriate sports drinks on hand.
- CONTEST OFFICIALS ARE PERMITTED TO ESTABLISH PRE-DETERMINED BREAKS

**The OHSAA has no regulations regarding a certain temperature or wind speed you should call off a match. (ex. Being too cold or high wind gusts). That must be determined between the two opposing coaches prior to the match**



# RULES OF TENNIS



# OHSAA Rules of Tennis

## Dual Match Protocol

- ❖ A dual contest consists of 3 individual singles participants and 2 doubles teams. Dual team matches are 2 out of 3 Tiebreak sets. **NO PLAYER IN A CONTEST MAY PLAY BOTH SINGLES AND DOUBLES**

- ❖ Players are to play in order of rank with the best singles player at first Singles, next best at 2<sup>nd</sup> singles. Same applies to doubles teams. Players Playing out of rank order is considered **Stacking** and could result in forfeiting the match. "Stacking" is not allowed under any circumstances.

Please refer to the Coaches Manual for the OTCA stacking procedures for the team tournament.

- ❖ Coaches should exchange lineups in writing prior to start of the contest.
- ❖ The home coach serves as the referee for the contest.
- ❖ Warm up is **10 minutes prior to the start of the contest** during which practice serves will be taken. Warmups are permitted prior to each respective match.
- ❖ No-Add scoring may be used on all courts in dual matches if both coaches agree **prior to** the start of the contest.
- ❖ **NOTE** the 10-point (match) tiebreak rule in lieu of the third set when a contest has already been decided can be used if **BOTH** coaches agree.



# OHSAA Rules of Tennis

## Scoring the Match

- ❖ The server's score is called first:  
Points are Love, 15, 30, 40, Game

- ❖ The server announces the score before starting each point!
- ❖ Players are requested to record scores on scoreboards as they change ends when scoreboards are provided. This should **NOT** be done by the coaches. The players oversee their own score.
- ❖ Disputes over the score shall be resolved using one of the following methods:
  1. Count all points and games agreed upon by the players, replay only the disputed points or games
  2. Play from a score mutually agreeable to all players
  3. Spin a racket or toss a coin
- ❖ Coaches or spectators **MAY NOT** tell the players what the score is. The players must work it out.



# OHSAA Rules Affecting Tennis

## CONTINUOUS COACHING

From the OHSAA's Sports' Regulations & Bylaws

- 1.12 Continuous coaching is permitted. In addition to coaching at the end of games 3,5,7,etc. and the end of each set, a coach may coach their own player(s) any time during the 25 seconds between points as long as the coach does not interfere with actual playing on the court.
- 1.13 A coach shall not initiate a conversation with an opposing player.
- 1.14 A coach may sit or stand near the net post and must stay within the area where the players' chairs or benches would be located if not provided or be outside the court.
- **IN DUAL MATCHES, ONLY ONE COACH IS PERMITTED PER TEAM TO SIT OR STAND NEAR THE NET POST. REVIEW THE TENNIS REGULATIONS.** During tournament play, the number of coaches on the court will be determined by the tournament manager and how much room is available.
- **Penalties for Continuous Coaching Violations:** If a coach violates the guidelines for continuous coaching, he/she will receive a warning for the first violation. Subsequent violations will result in his/her player receiving a point penalty on the court where the violation occurred. (Continuous coaching penalties are similar to time violations.)

Additional information about continuous coaching can be found in the Boys Tennis Coaches Manual.



**Please do not interfere with the match or speak to an opposing player.**

# OHSAA Rules Affecting Tennis

## CONTINUOUS COACHING

From the OHSAA's Sports' Regulations & Bylaws

### "On Court" Clarification

6.2 Coaching may only take place where facilities permit it. Matches on other courts cannot be interfered with. **A coach may sit or stand near the net post (only one coach, per team, permitted to sit or stand during a dual match near the net post), and all coaches (when more than one is permitted) must stay within the area where the players' chairs or benches would be located if not provided. (see diagram A1).** The coach's movement shall be limited so as not to distract the players. A coach may change courts when his/her movement will not interrupt play. It is permissible to coach from outside of a fenced court, **on an empty adjacent court where the coach may stand, and/or at the doubles sideline on the same side of his/her own player but must remain in the players area (see diagram A2) . . . the coaching does not interfere with other matches occurring simultaneously or the match in progress. Coaches shall never distract an opposing player. Coaches may coach within the lines of the court only during a changeover or set break.**

DIAGRAM A1

if doesn't interfere with  
3ft adjacent court

Coach Area  
6ft 6ft

3ft if doesn't interfere  
with adjacent court

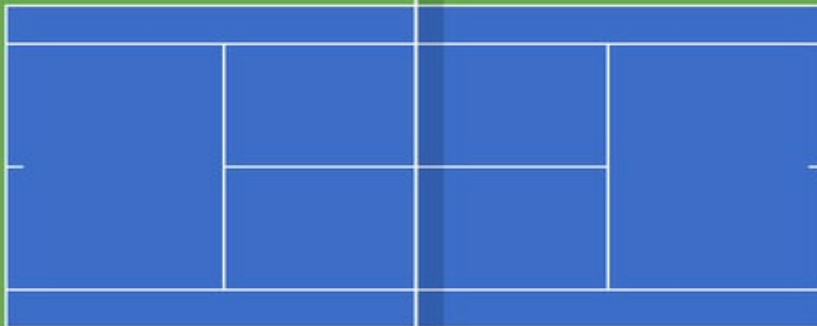


DIAGRAM A2

To the doubles sideline  
if the court is empty.

Coach Area

To the doubles sideline  
if the court is empty.



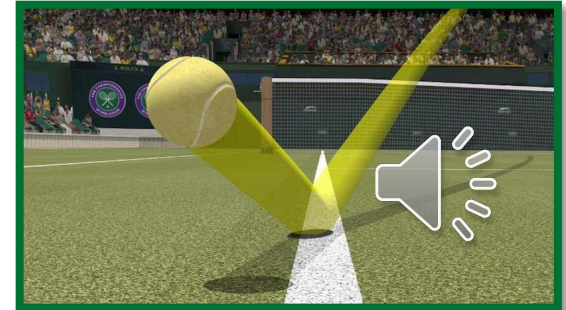
# OHSAA Rules of Tennis

## Making Calls

A Player makes calls on their own side of net. A player calls all shots landing on, or aimed at, the player's side of the net. Any ball coming toward a player is his/her call.

The opponent gets benefit of the doubt. When a match is played without officials, the players are responsible for making decisions, particularly line calls. There is a subtle difference between player decisions and those of an on-court official. An official impartially resolves a problem involving a call, whereas a player is guided by the principle that any doubt must be resolved in favor of an opponent.

**Ball touching any part of the line is good. If any part of a ball touches a line, the ball is good. A ball 99% out is still 100% good.**



# OHSAA Rules of Tennis

## Foot Faults & Hindrance



Players **may not** call foot faults on one another.

Players should inform their coach if they suspect foot faulting is taking place. Only coaches/monitors can call foot faults.

Once a coach/monitor has been assigned, foot fault infractions can be called from outside the court.

A player who claims a hindrance must stop play as soon as possible.  
**SINGLES PLAYERS SHOULD NOT TALK DURING POINTS**

**TALKING BETWEEN DOUBLES PLAYERS WHEN THE BALL IS MOVING TOWARD THEM IS PERMITTED**  
**DOUBLES PLAYERS SHOULD NOT TALK WHEN THE BALL IS MOVING TOWARD THEIR OPPONENTS**  
**SIDE OF THE COURT**

**WHEN TALKING INTERFERES WITH AN OPPONENT'S ABILITY TO PLAY A BALL...IT IS A HINDRANCE**



# OHSAA Rules of Tennis

## Electronic Devices

1. If the cell phone, or other 'electronic device' of a player (or that player's coach on the court) "rings" during the match, said player will receive a warning and each subsequent offense will be assessed a point penalty.
2. If the cell phone, or other electronic device, of a player (or that player's coach on the court) "rings" while the ball is in play the player loses the point being played.
3. The use of **ANY** electronic devices such as cell phones, digital messaging systems, radios, mp3 devices, tablets, CD and DVD players, cassette players, and **watches that receive digital messages** to receive coaching and other information is prohibited. **The ONLY EXCEPTION to this rule is a player that has a diabetic monitor and must have phone on. Coaches should inform the other coach and / or tournament manager of this before the match begins.**

**NOTICE**

**USE OF  
CELL PHONES  
IN THIS AREA  
IS PROHIBITED**

FIRST OFFENSE: the player will be warned, and each subsequent offense will be a point penalty.



# OHSAA Rules of Tennis

## VIDEOTAPING

1. It is permissible for a school or a school representative to videotape or photograph regular season contests of the team or individuals from one's own school. Such videotapes or photographs may be used for "in-game" coaching purposes only if it is specified in the national playing rules of the sport or in the specific sport regulations.
2. Videotaping of an opponent cannot be published on social media platforms (ex: YouTube, Tick-Tok, Instagram, etc.) without the **WRITTEN consent** of all schools participating in the contest(s).
3. Spectators taking videos or photos at match contest or OHSAA tournament contests shall not interfere with the view of a contest by other spectators and follow the rules of spectators (ex: staying at least 5-10 ft off the fence, cannot be on court). These videos or photos are to be used only for coaching purposes and **CANNOT** be posted on social media or other platforms without the written consent of all schools involved.



The complete Media regulations can be found on page 85 of the OHSAA Handbook

As a principle, play should be continuous, from the time the match starts (when the first serve of the match is put in play) until the match finishes.

## OHSAA Rules of Tennis

# Continuous Play

A. *Between points, a maximum of 25 seconds is allowed. When the players change ends at the end of a game, a maximum of 90 seconds is permitted. However, after the first game of each set and during a tie-break game, play shall be continuous, and the players shall change ends without a rest.*

**Note:** *The 25 second time limit does not apply if a player must chase a stray ball.*

At the end of each set there shall be a set break of a maximum of 120 seconds (2 minutes).

The maximum times starts from the moment that one-point finishes until the first service is struck for the next point.



# OHSAA Rules of Tennis

## Continuous Play

B. If, for reasons outside the player's control, clothing, footwear or necessary equipment (excluding the racket) is broken or needs to be replaced, the player may be allowed reasonable extra time to rectify the problem.

C. No extra time shall be given to allow a player to "recover." However, a player suffering from a treatable medical condition may be allowed one medical timeout of 5 minutes for the treatment of that medical condition. A limited amount of toilet/change of attire breaks may also be allowed.



# OHSAA Rules of Tennis

## Medical & Bleeding Timeout

OHSAA regulations indicate that a medical timeout consists of evaluation time as determined by the official/referee plus a maximum of five minutes for treatment. The time allotted for evaluation and treatment should NOT exceed 15 minutes.

Each player only gets ONE medical timeout, no matter if they are separate injuries. (example: twisted ankle – 1<sup>st</sup> medical timeout, then starts cramping – player must default.)

### Bleeding Timeout

In the case of stoppage of play involving bleeding, body fluids, asthma attacks, and/or diabetic attacks, the affected player is entitled time to stop the bleeding/body fluids and clean the affected area, administer medication or administer insulin (insulin medication may be administered either on or off the court). If clothing becomes soaked with blood or body fluids, the player must change clothing. When there is a stoppage in play due to an issue involving blood or body fluids, the stoppage shall not be counted as an injury timeout.

If the bleeding/body fluids or the removal of the blood/body fluids, asthma attack, or insulin attack takes more than 15 minutes or if the official in charge determines that ***the continuation of the match would likely involve continued interruptions***, such as after the third stoppage of play, and thus would not be fair to the opponent, the official shall require the player who is bleeding/body fluids/or having an asthma attack or insulin attack to retire.

# OHSAA Rules of Tennis

## On Court Monitors

If a request is made for a monitor to go on court, the monitor will only rule on calls which are challenged by the player with a **VERBAL** request. The decision of the monitor is final.

To continue to argue a call after the monitor has ruled may result in an unsporting conduct penalty.

The only calls made automatically by the monitor are obvious foot faults and lets.

Monitors should not be other players, students, parents, or general spectators.



# OHSAA Rules of Tennis

## Points of Emphasis

**The following are rules that Coaches need to be reminded of during the season and tournament play.**

### Continuous Play after Game One of the Set & Tiebreakers

At the conclusion of the first game of each set, the players only have 25 seconds to change size, just enough to get a drink, towel off, and continuous coaching can take place during time. There is no stoppage of play, lengthy coach talk, or sitting down. This also applies to switching the sides of the court during tiebreakers.

### One Coach Near Net Post

During dual matches during a contest **ONE** coach from each team is permitted to stand or sit near the net post (near, not leaning on the post or stand so close as to interrupt play). This is indicated in Tennis Regulations 1.14. I have received complaints that multiple coaches from the same team have been standing or sitting near the post which has been imposing/intimidating for the opponent.

### Who can Coach the players on the court?

Only Board Approved and ODE certified coaches can coach players on the court. Spectators, parents, and other players cannot coach the players while they are playing. Players (along with parents and spectators) cannot stand on the fence or converse with the players on court during a match. It is very distracting to the players.

### Lets

Service let calls. Any player may call a service let. The call shall be made before the return of serve goes out of play or is hit by the server or the server's partner. If the serve is an apparent or near ace, any let shall be called promptly





## **OHSAA Rules of Tennis** **Match Accommodations**

Please make reasonable accommodations for students who are playing multiple matches on the same day.

Provide an adequate rest period for students who have had an extended match or who are playing in extreme weather conditions. Especially hot and humid weather conditions.

**THINK**  
**SAFETY**  
**FIRST**



# OHSAA Rules of Tennis

## CODE OF CONDUCT

The following Code of Conduct has been adopted by the Ohio Tennis Coaches' Association (OTCA) and is used for all OHSAA tournament and school contests. *In some cases, it supersedes USTA regulations.* **Players can incur Code violation Penalties for actions not only during the match, but also before and after the match.**

In dual contests, even though the home coach is the referee, **both coaches MAY and SHALL enforce these regulations.** It is suggested that, before each tournament/contest/match, each participant be advised that the OHSAA point penalty system will be enforced. **Penalties for code violations are accumulative and follow the listed progressions.**



# OHSAA Rules of Tennis

## CODE OF CONDUCT

### Time Violations

1. In OHSAA-sponsored tournaments where there is a meeting of the manager and coaches:

The penalties for time violation in No. 1 are:

15 minutes late for meeting: LOSS OF COIN TOSS PLUS ONE GAME  
Each additional 5 minutes late: LOSS OF GAME; UP TO THREE GAMES

**NOTE:** This holds for all players for which the coach is responsible. Implementation of these penalties is at the discretion of the tournament manager.

2. Not starting play within 25 seconds after a 10-minute warm-up.
3. The receiver must play at the reasonable pace of the server and must be ready to receive when the server is ready to serve.
4. 90 Second rule on game change over and two minutes after each set.
5. Violations of Continuous Coaching Guidelines

The penalties for violations in #2,3, 4 & 5 are:

1<sup>st</sup> Offense: **WARNING**  
Each Subsequent Offense: **LOSS OF POINT**



# OHSAA Rules of Tennis

## CODE OF CONDUCT

### Unsporting Conduct

THESE ARE MINIMUM REGULATIONS. DEPENDING ON SEVERITY, A COACH OR OFFICIAL MAY ISSUE A PENALTY MORE SEVERE, INCLUDING IMMEDIATE DISQUALIFICATION!

6. ANY unsporting conduct including but not limited to:
  - 6.1 Prolonging an argument after being directed to play
  - 6.2 Visible or audible profanity
  - 6.3 Abuse of racquet, balls or equipment
  - 6.4 Abusive conduct by a player or a person associated with a player
  - 6.5 Taunting or baiting an opponent (any attempt to embarrass, ridicule or demean another person).
  - 6.6 In an officiated match, excessive overrules by an official or excessive appeals by a player can be deemed unsporting conduct and penalized as such.

### *The penalties for violations above are:*

**1<sup>st</sup> Offense:**

**POINT**

**2<sup>nd</sup> Offense:**

**GAME**

**3<sup>rd</sup> Offense:**

**DISQUALIFICATION**



# OHSAA Rules of Tennis

## CODE OF CONDUCT

### Code Violations Resulting in Immediate Disqualification

The following are code violations that would result in immediate disqualification:

Verbal or physical abuse of player or official.  
Extreme unsporting behavior

Not resuming play after 5 minutes following treatment of an injury or illness (or the maximum 15 minutes total).

Being late for a tournament match (10 minutes) after the match has been called to start (This is after the coach has reported to the tournament manager that they are present. A team still has a predetermined time to report to the tournament at the sectional and district tournament level.

**NOTE:** These are minimum regulations, and, depending upon the severity of the situation, a coach or official may issue a penalty more severe than is listed.





# OHSAA Rules of Tennis

## CODE OF CONDUCT - EJECTION POLICY

THE OHSAA EJECTION POLICY IS DIFFERENT THAN THE OTCA CODE OF CONDUCT

THE OHSAA EJECTION POLICY INDICATES THAT A STUDENT OR COACH **WHO IS EJECTED FROM A CONTEST**...IS REMOVED FROM THAT CONTEST FOR THE REMAINDER OF THAT DAY AND ALSO THE NEXT TWO CONTESTS AT THE SAME LEVEL OF THE EJECTION...

*ALL EJECTIONS ARE TO BE REPORTED TO THE APPROPRIATE ATHLETIC DIRECTOR, WHO WILL REPORT THE EJECTION TO THE OHSAA. IN OHSAA TOURNAMENT PLAY, THE TOURNAMENT MANAGER SHALL REPORT THE EJECTION TO THE OHSAA.*

# OHSAA Rules of Tennis

## SPECTATOR GUIDELINES



### SPECTATOR GUIDELINES FOR ALL HIGH SCHOOL TENNIS

Parents, friends, teammates and other fans:

- ❖ Are not permitted on the court
- ❖ Should not lean on or crowd around the fence
- ❖ May not converse with players once they enter the court
- ❖ May not coach, give advice or help with scoring or line calls
- ❖ Cannot hand any type of item to the players on the court, only a coach or team member.
- ❖ Should refrain from distracting the players
- ❖ May cheer or applaud when one of the players hits a winning shot but should not cheer or applaud when players commit unforced errors.



**JOIN US IN GOOD SPORTSMANSHIP!**

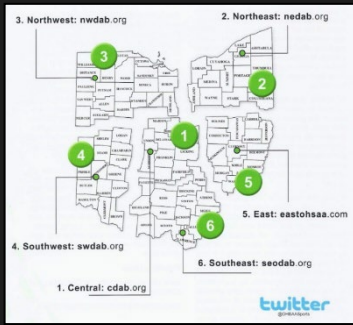
# O.T.C.A.

## The Ohio Tennis Coaches' Association



- Sponsor of the State Team Tournament
- All-Ohio Awards
- Scholar-Athlete Recognition
- State Tennis Clinic
- SEI Awards
- Hall of Fame
- Scholarships
- School Awards
- “New” Match Finder
- “New” Coaches Search
- “New” Coaches Favorite Drills
- New Coaches Class
- Sportsmanship Awards
- Selected Coaches serve as State Tournament Officials





## OHSAA TOURNAMENT PLAY



DISTRICT ATHLETIC BOARDS Organize Sectional/District Tournaments

OHSAA Conducts State Tournaments

OHSAA Tournaments are About Representation: Preliminary tournaments in a defined geographic area of the state produce winners that advance to tournaments in a larger geographic area, and so on, all the way to the state tournament.



Not “Best of the Best” tournaments



## OHSAA TOURNAMENT PLAY NEW FORMAT

When entering your players for the OHSAA tournament series (sectionals, districts, state), you can now enter your players in either of two formats:

1. Traditional: 3 singles and 2 doubles (4 substitutes)
2. **New:** 1 singles and 3 doubles (4 substitutes)

With either format, the rules of entering are still the same (pg 13, number 5 in the tournament manual).

Those schools that do Sectional Voting Placement (Central, NE, and Cincinnati area of SW) you must place in the comment section what format you will be entering so other teams can make a determination of where to seed your team.



# OHSAA BOYS TENNIS RULE MEETING CONCLUSION / THE END

This **CONCLUDES** the  
2026 Boys Tennis Rules Meeting.

Please refer to the Tennis & Tournament Manual for more clarification on any rule discussed in this presentation.

**Please do not call the office for attendance verification.**  
Attendance will be updated on your FinalForms profile.

Thank you for all you do for OHSAA student-athletes!

