



HUDL Focus Camera Setup

1. Items needed: Hudl Focus equipment backpack, tripod with RC2 mount base, Hudl Focus app on mobile device. Open backpack from rear to access all cables and charging adapters.
 - a. Make sure both the external battery and the camera battery is full charged before setting up.

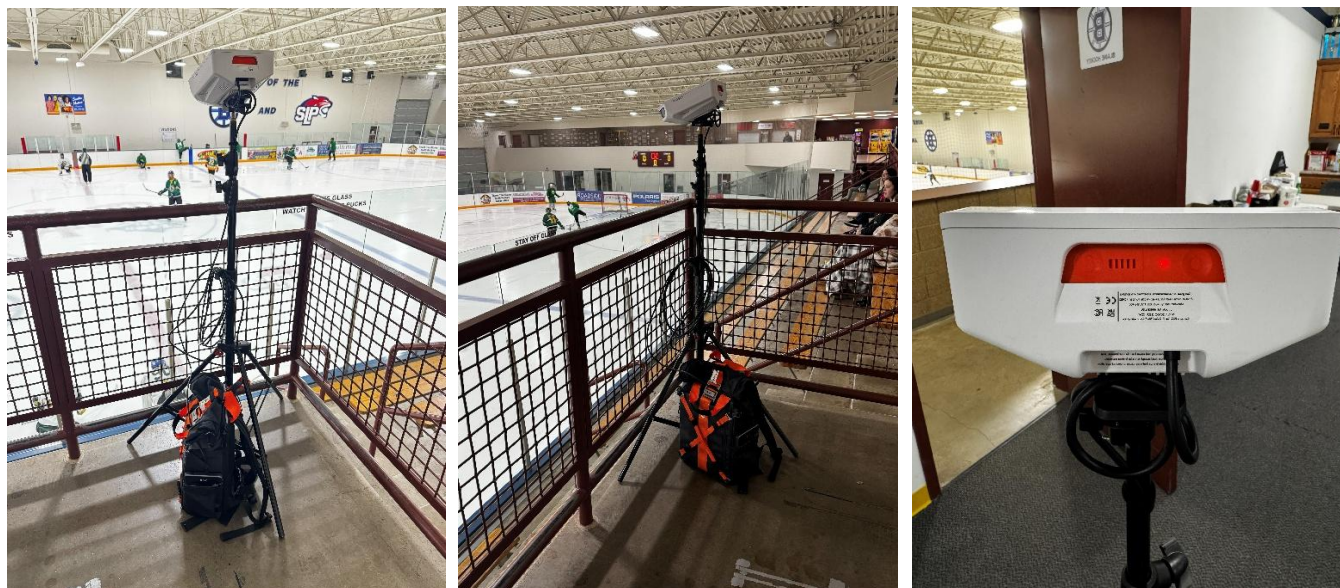


2. Mount camera to tripod and run power cable as shown. Make sure external battery is fully charged and placed in the side pocket of backpack.

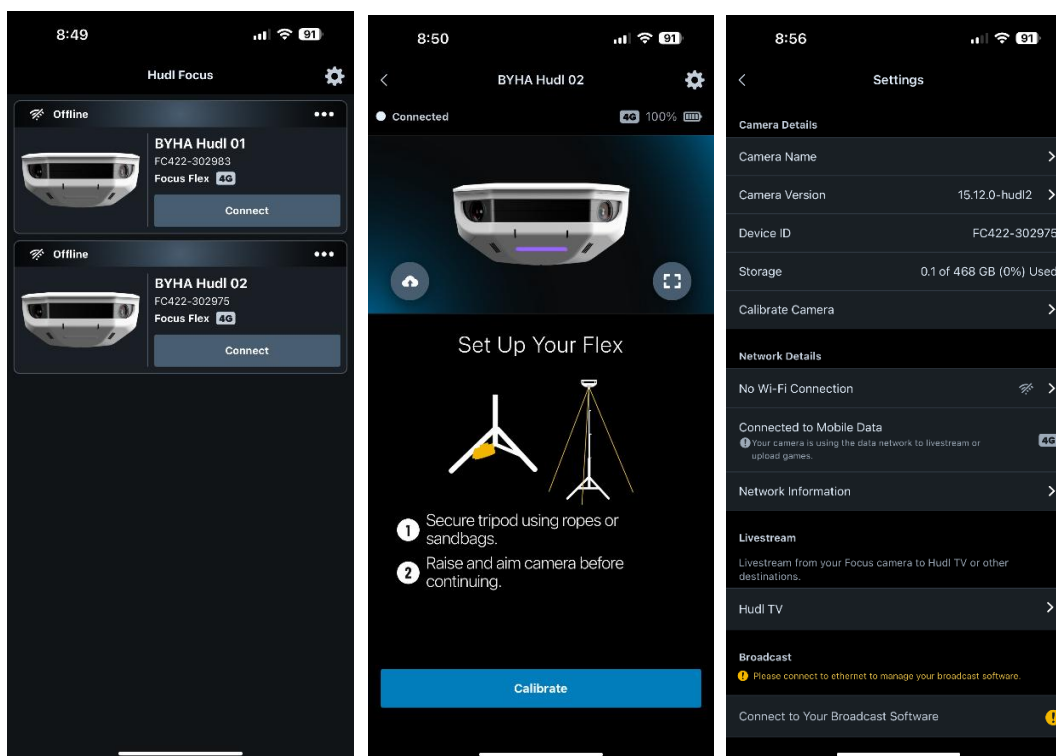




3. Locate camera to a location as close to center ice as possible. Plug in camera into external battery or an electrical outlet with one of the 65w power adapters. Camera battery + external battery are good for approximately 4 hours of camera power on time. Press the battery button on the back of the camera to check the battery level. Power up the camera when ready to connect app and calibrate camera to rink.

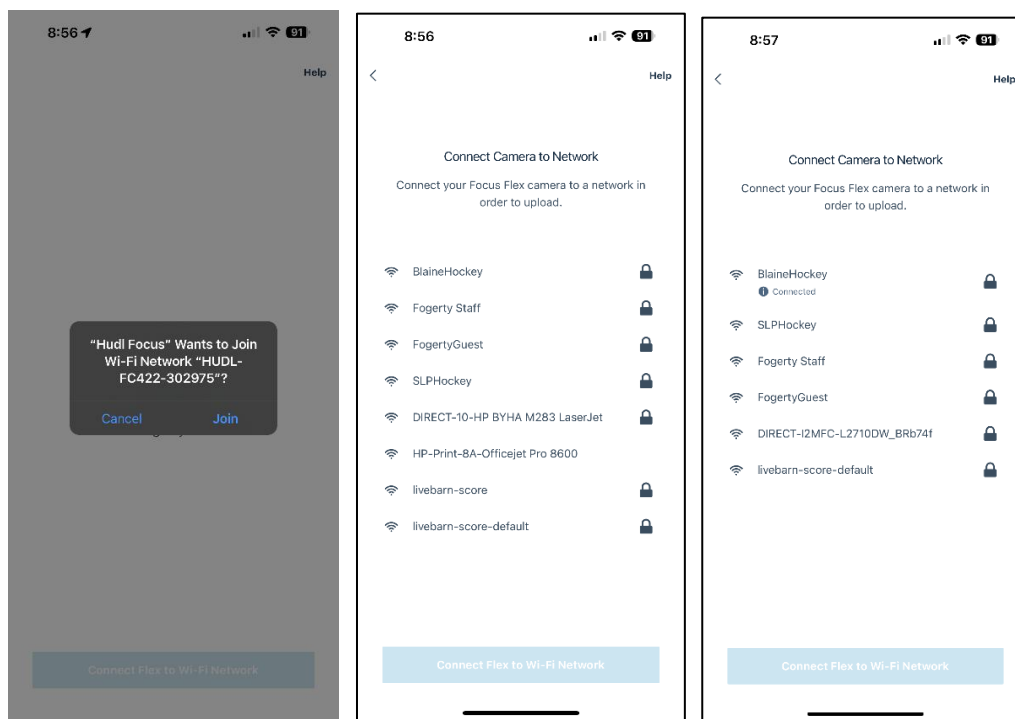


4. Check for a reliable WiFi network at the rink that does not require a terms and conditions agreement step like many hotels and city owned properties require. The camera will not stay connected to these types of networks. Try running a bandwidth Speed Test on your mobile phone to find the fastest and most stable network connection for the camera to connect to. Turn off your WiFi to check cellular speeds. Turn on the WiFi and connect to rink networks to check WiFi speeds.
5. Launch the Hudl Focus app and make sure you're logged into your team "Video Uploader" user account. The camera may already be "Online" if connected to a cellular network or a WiFi network that has been configured previously on that camera. Select the correct camera option to connect to it.

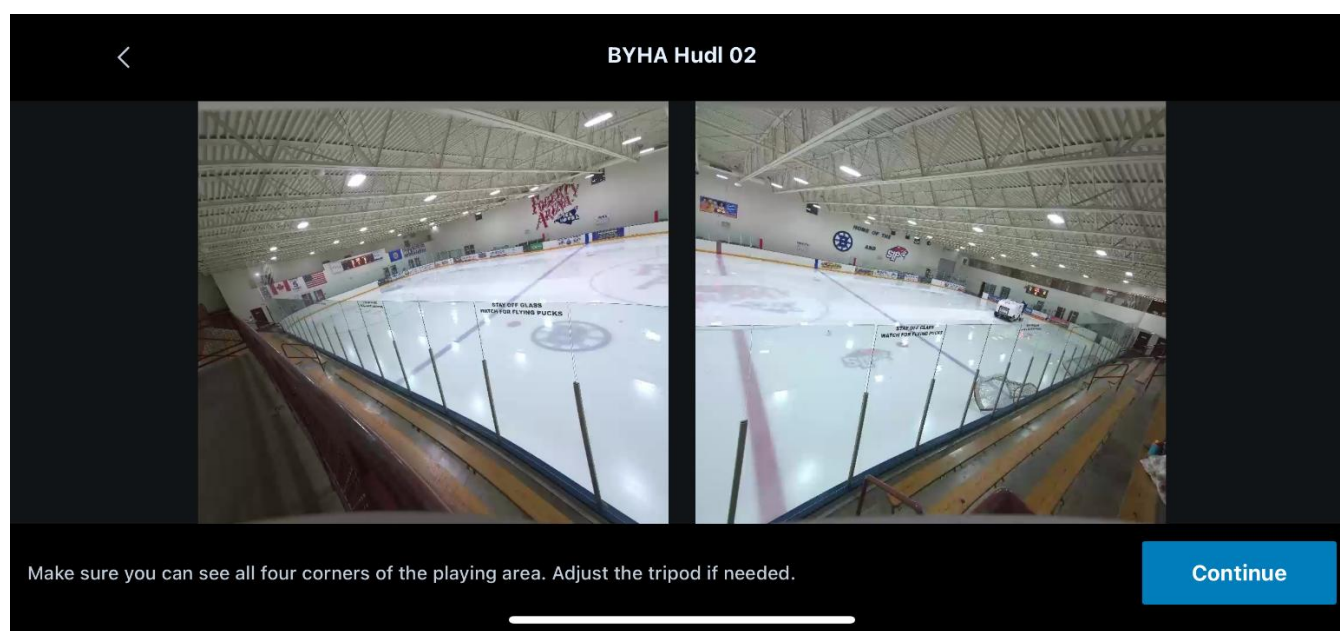


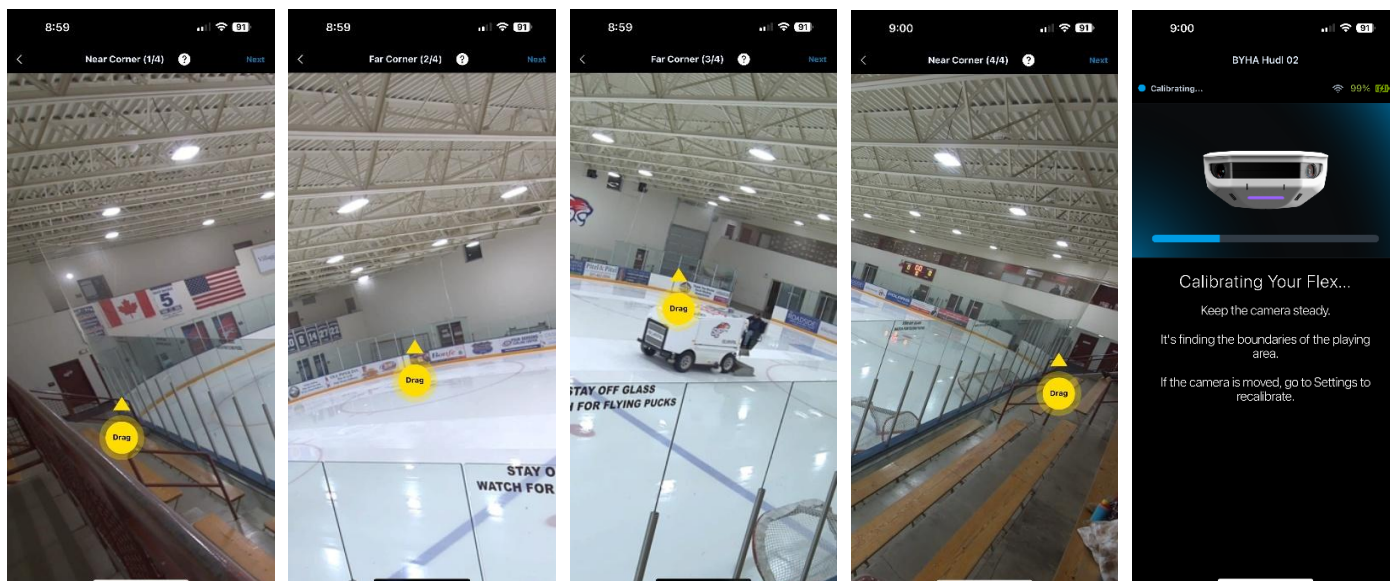


6. If Cellular had the best connection, there is no need to configure a WiFi connection. Just make sure the 4G indication is noted as connected.
 - a. To connect to a Wifi network, select “WiFi Connection” in the camera settings, join the camera WiFi network to configure the camera, find the correct network, enter password if required. DONE.

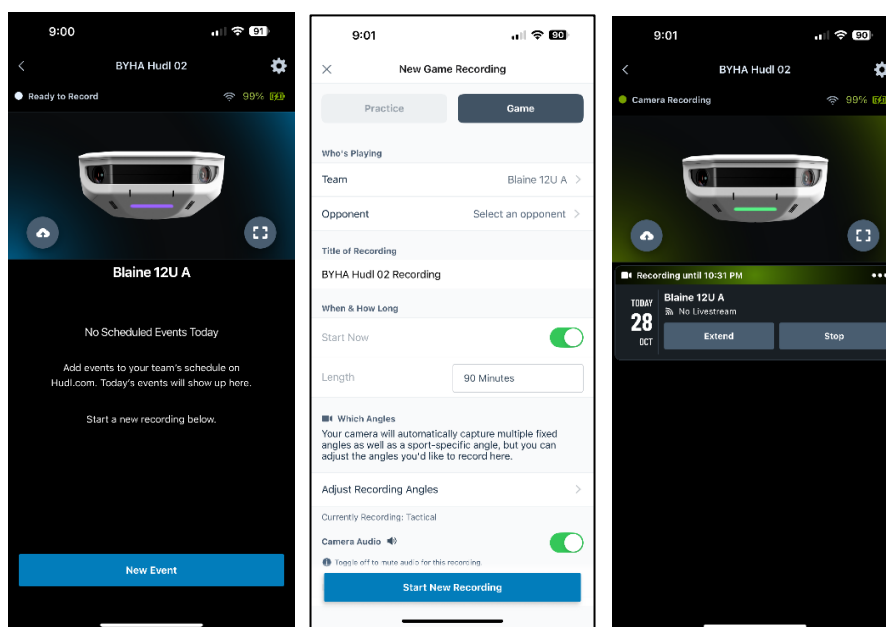


7. Calibrate the camera to the rink and camera viewing angles. Click Calibrate from the Focus app once you’re reconnected to the camera. Follow the prompts in the Focus app to complete the calibration. See following screenshots for steps you should see and the correct corner marker locations. Adjust tripod to get all edges of the rink within the camera view and make sure the tripod is stable and does not move after the calibration process or while filming. If anything is moved, you will need to recalibrate for the camera to work properly.



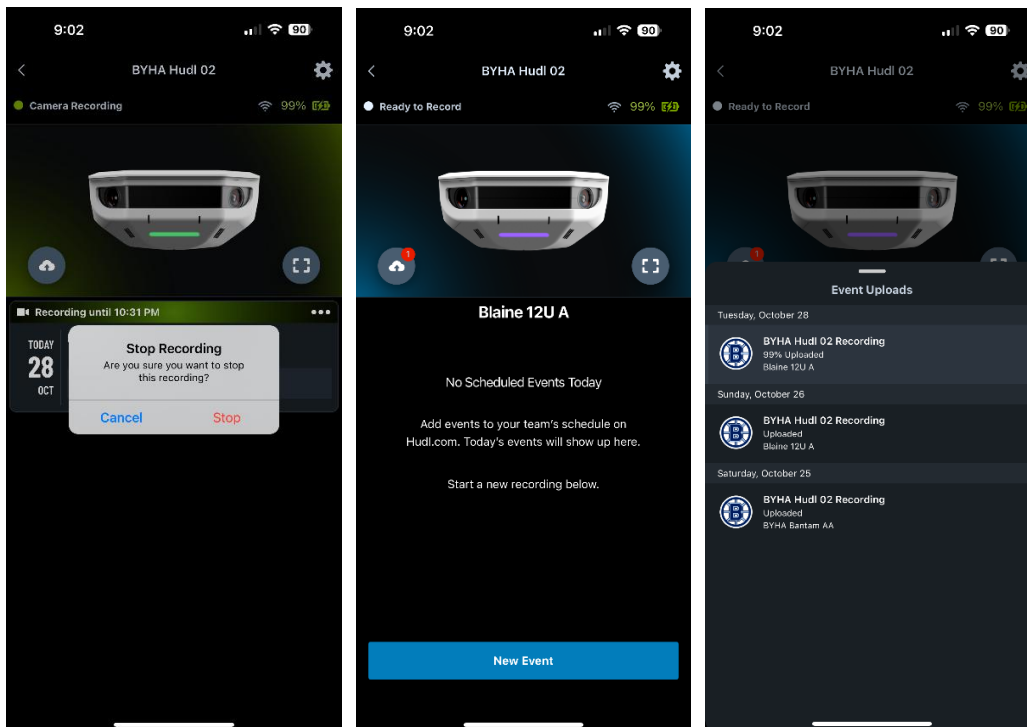


8. Setup recording event. You can select any pre-scheduled event in Hudl for the current day or click the “New Event” to enter the event information. Select your opponent if they are listed, set the recording start time if setting up early, select a length that can safely get through the end of the game, select “Start New Recording”.





9. When handshakes are over, you can end the recording manually or allow it to time out. When you're back to the "New Event" screen, you will see a red dot on the cloud that shows the video is still being uploaded. You can click on the cloud to see the progress of the camera uploads. Decent internet connections will stay in the 90% uploaded range and keep up with the recording buffer as they are being filmed.
- You can power down the camera while uploading and resume the uploads at a later time by powering it back up and connecting to a good internet connection via built in cellular, WiFi, or by plugging the camera into an ethernet connection with the Cat6 cable in the backpack.
 - Make sure to fully charge the camera and external battery after every use.



Call or text Jeff Meister with any questions.
612-802-5292 mobile

You can also call Hudl Support too.

HAPPY HUDL FILMING!