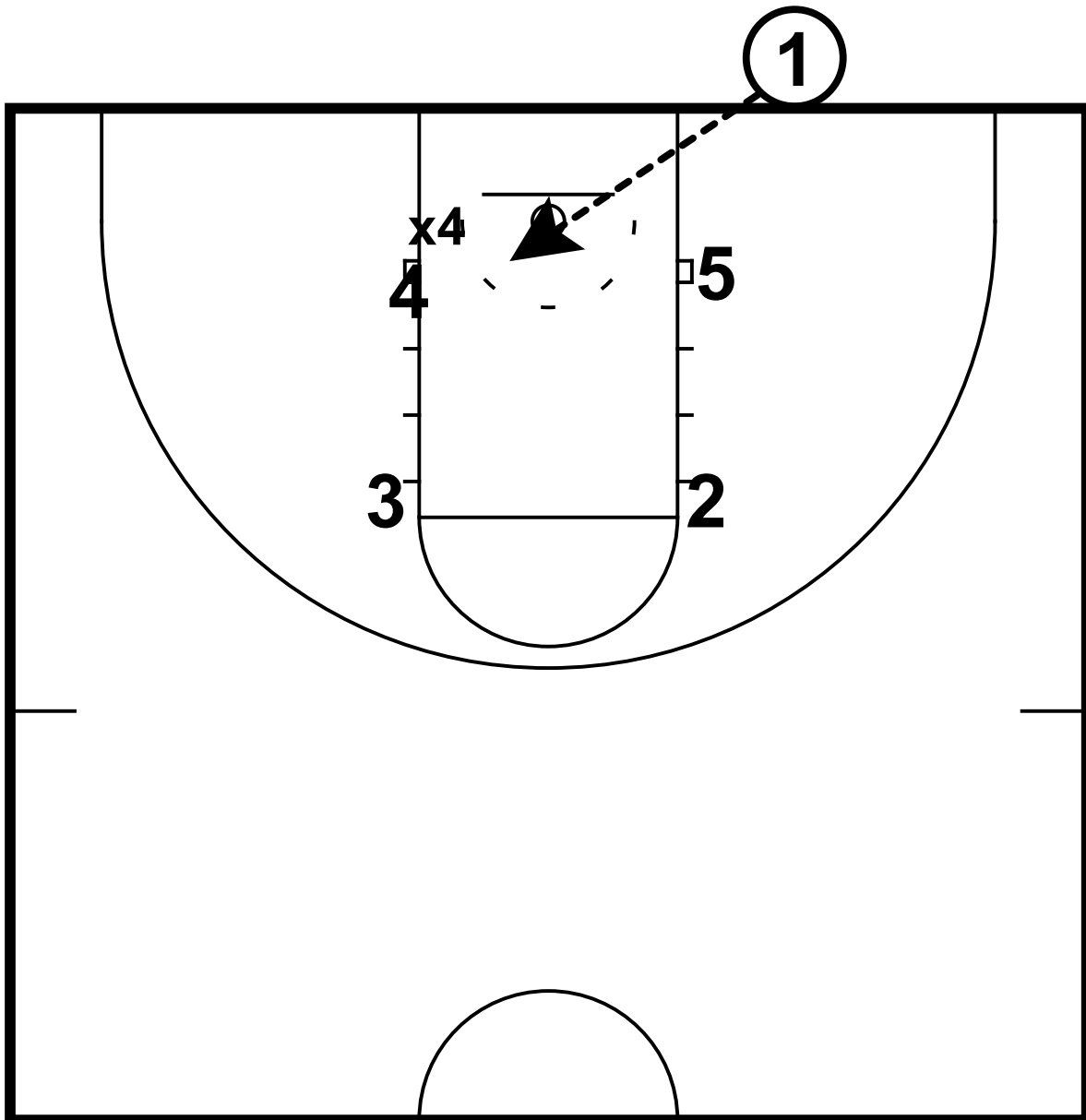


## BLOB - Letters



If coach calls any "letter" after we set up for the inbound play we throw the ball to the rim as soon as the official hands it to us for the 4 to go get.

It's critical that the player receiving the pass does not move before the ball is in the air to not tip off the defense the ball is coming.

Ex: If coach calls out "Z" the in-bounder will lob the ball toward the rim as soon as the referee hands it to them.