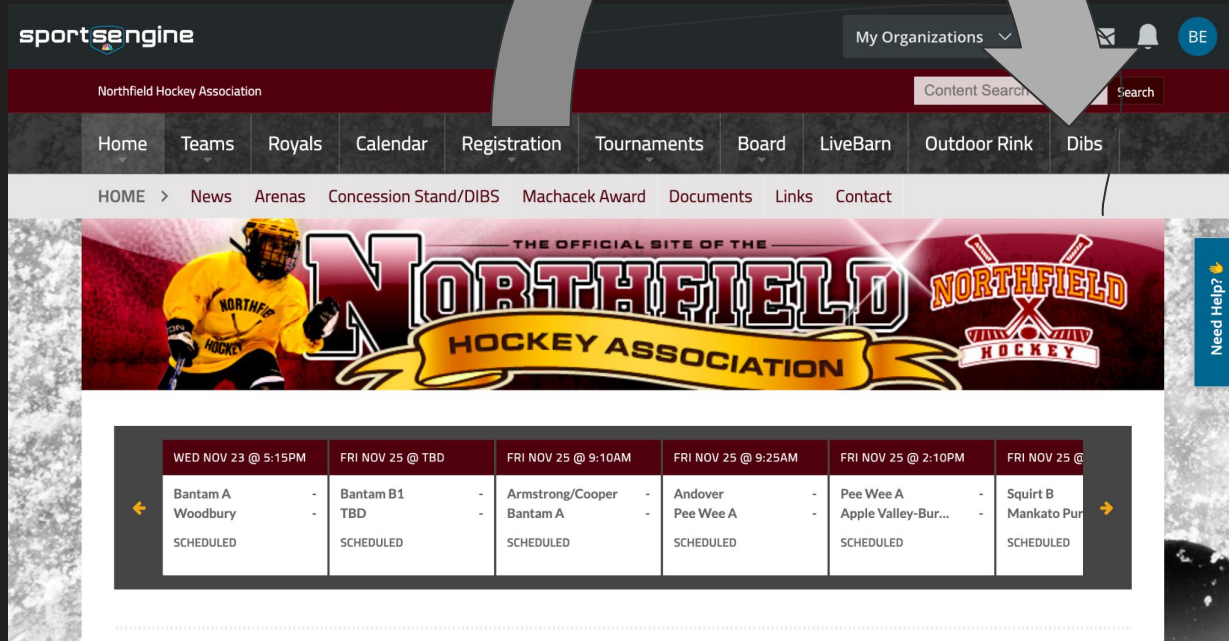


# Hockey Concessions

What you need to know

# Where do I find the DIBS on the Northfield Hockey website?

- Go to: [www.northfieldhockey.net](http://www.northfieldhockey.net)
- Click DIBS in the far right corner

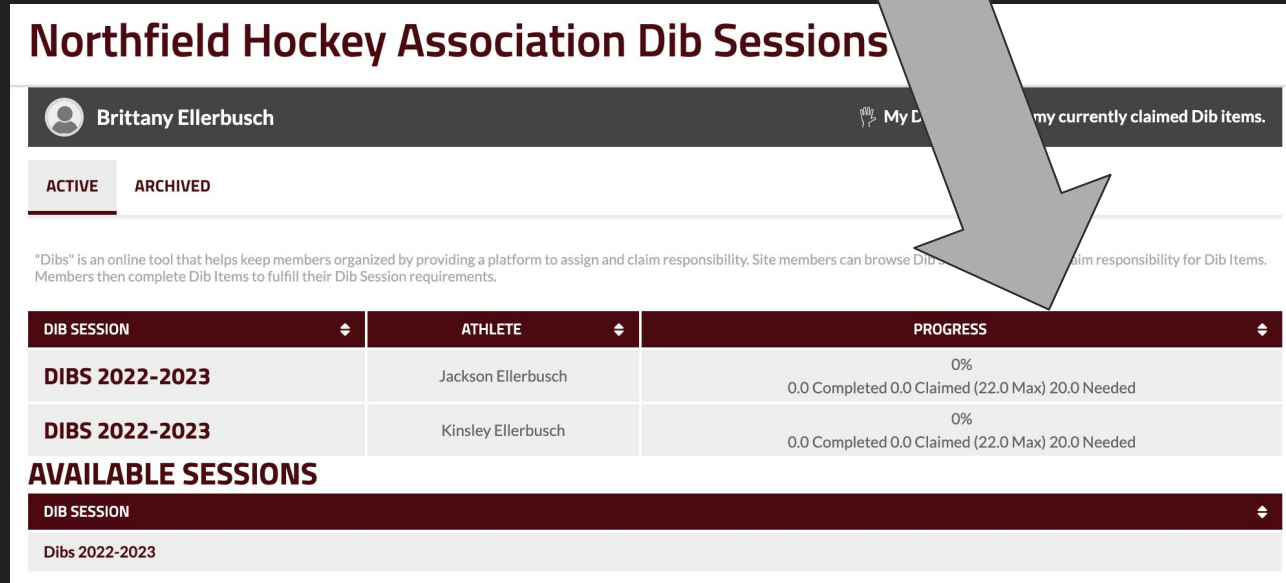


The screenshot shows the website interface for the Northfield Hockey Association. At the top, there is a navigation bar with the 'sportsengine' logo on the left and 'My Organizations' on the right. Below this is a dark red header with the text 'Northfield Hockey Association' and a search box. A main navigation menu contains links for Home, Teams, Royals, Calendar, Registration, Tournaments, Board, LiveBarn, Outdoor Rink, and Dibs. A secondary menu below it includes HOME, News, Arenas, Concession Stand/DIBS, Machacek Award, Documents, Links, and Contact. The main content area features a large banner with a hockey player in a yellow jersey and the text 'THE OFFICIAL SITE OF THE NORTHFIELD HOCKEY ASSOCIATION'. Below the banner is a table of scheduled games.

WED NOV 23 @ 5:15PM	FRI NOV 25 @ TBD	FRI NOV 25 @ 9:10AM	FRI NOV 25 @ 9:25AM	FRI NOV 25 @ 2:10PM	FRI NOV 25 @
Bantam A Woodbury SCHEDULED	Bantam B1 TBD SCHEDULED	Armstrong/Cooper Bantam A SCHEDULED	Andover Pee Wee A SCHEDULED	Pee Wee A Apple Valley-Bur... SCHEDULED	Squirt B Mankato Pur... SCHEDULED

# How do I read how many DIBS I have completed?

- This will tell you how many you have left
- PLEASE NOTE: It will say 20 hours - ALL Mini Mites need to complete 10 hours unless you have a player at another level
- Click here to check for available DIBS



## Northfield Hockey Association Dibs Sessions

Brittany Ellerbusch My Dibs my currently claimed Dibs items.

**ACTIVE** ARCHIVED

"Dibs" is an online tool that helps keep members organized by providing a platform to assign and claim responsibility. Site members can browse Dibs Sessions and claim responsibility for Dibs Items. Members then complete Dibs Items to fulfill their Dibs Session requirements.

DIB SESSION	ATHLETE	PROGRESS
<b>DIBS 2022-2023</b>	Jackson Ellerbusch	0% 0.0 Completed 0.0 Claimed (22.0 Max) 20.0 Needed
<b>DIBS 2022-2023</b>	Kinsley Ellerbusch	0% 0.0 Completed 0.0 Claimed (22.0 Max) 20.0 Needed

### AVAILABLE SESSIONS

DIB SESSION

Dibs 2022-2023

# How can I find DIBS that are AVAILABLE?

- Use the filter provided to sort through DIBS availability

## Dibs 2022-2023

 Brittany Ellerbusch

 My Dibs: View all of my currently claimed Dib items.

Dibs > Dibs 2022-2023

My Dib Sessions:

### DIBS 2022-2023

Jackson Ellerbusch has currently fulfilled 0 of 20 required credit(s).The maximum credits allowed for this Dib Session is 22.



0%

Kinsley Ellerbusch has currently fulfilled 0 of 20 required credit(s).The maximum credits allowed for this Dib Session is 22.

0%

LIST VIEW

CALENDAR VIEW

Has Date/Time

From:

Location:

Category:

Credit Value:

Status:

Has no Date/Time

To:

All

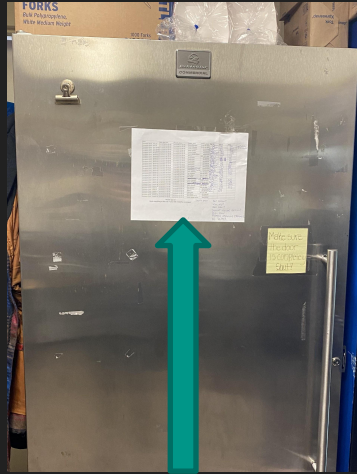
Any

(blank for any)

All

**FILTER DIB ITEMS**

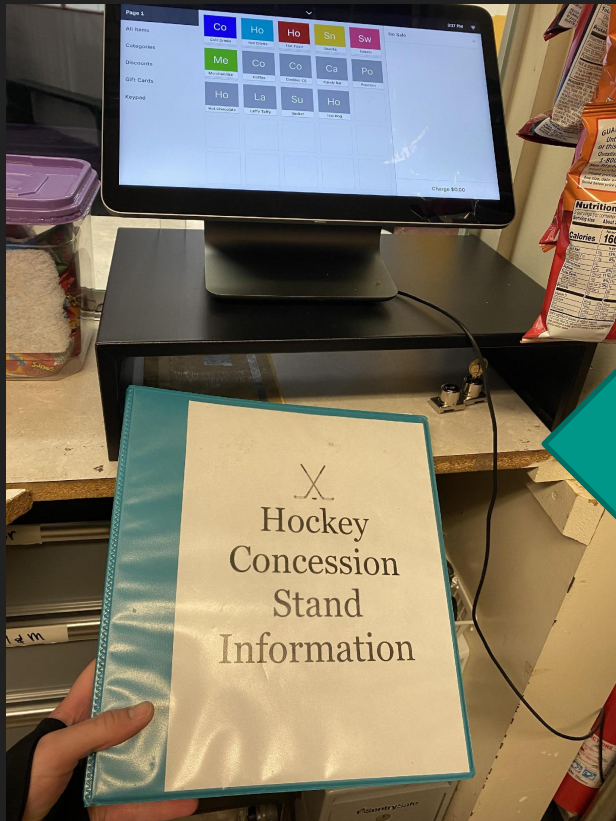
# What does the Concession Stand look like?



Sign in here



Where can I find the manual (instructions) on what to do?



The manual is located under the concession stand computer. The following slides are what you can expect to see when you open the manual.

# Manual Pages full of information ...

## THANK YOU FOR VOLUNTEERING!

### BEGIN YOUR SHIFT:

- SIGN IN ON THE DIBS SHEET LOCATED ON THE FREEZER DOOR
- COUNT MONEY, RECORD STARTING CASH ON THE DIB SHEET
- UNLOCK CONCESSION WINDOW. KEYS ARE ON THE SAME RING AS THE REGISTER KEYS.
- PREPARE COFFEE

(PLEASE NOTE, NO COFFEE AT PRACTICES AFTER 4PM)

### END YOUR SHIFT

#### (IF SOMEONE IS COMING IN AFTER YOU)

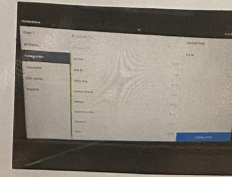
- AT THE END OF YOUR SHIFT, MAKE SURE YOU LEAVE THE CONCESSION STAND, CLEAN, STOCKED AND ORGANIZED.
- COUNT MONEY
- RECORD YOUR TOTAL AND SIGN THE DIBS SHEET.

### END OF DAY/CLOSING SHIFT

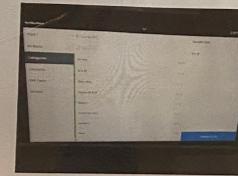
- AT THE END OF THE SHIFT, MAKE SURE YOU ARE LEAVING THE CONCESSION STAND CLEAN, STOCKED AND ORGANIZED.
- COUNT MONEY. DO NOT COUNT THE CHANGE
- LEAVE \$120 IN THE DRAWER (~~\$40-\$10, \$40-\$5, \$40-\$1~~)
- COUNT THE REMAINING CASH AND PLACE IN AN ENVELOPE. RECORD THE TOTAL ON THE OUTSIDE OF THE ENVELOPE. WRITE YOUR NAME AND DATE AS WELL.
- PUT ENVELOPE IN SAFE
- LOCK CONCESSION WINDOW.
- LOCK CASH DRAWER AND PUT KEY AWAY.
- WIPE DOWN ALL SURFACES
- SWEEP
- TAKE OUT GARBAGE AND CARDBOARD (OUTSIDE TO THE LEFT)
- TURN OFF LIGHTS

# Manual Pages full of information ...

## NEW SQUARE REGISTER HOW TO USE:



1. IF THIS SCREEN **DOES NOT** APPEAR WHEN YOU BEGIN, CLICK THE MIDDLE ARROW.
2. CHOOSE CHECKOUT.
3. FIND THE CATEGORY OF THE ITEM
4. ADD ALL ITEMS BEING PURCHASED
5. MUG, MASK, UNDER MERCHANDISE



IN THE UPPER RIGHT CORNER, YOU WILL SEE THE SALE ITEMS

IF YOU NEED TO REMOVE AN ITEM, CLICK THE ARROW ON THE RIGHT OF CURRENT SALE. A DROP DOWN MENU WILL APPEAR.

CLICK "CLEAR ITEMS"

WHEN FINISHED ADDING ITEMS, CLICK CHARGE



ENTER THE AMOUNT OF CASH

OR

RUN CREDIT CARD.

WHEN SALE IS FINISHED, CLICK NEXT SALE

**PLEASE RING ALL ITEMS UNDER THE CORRECT CATEGORY/ITEM. THIS IS HOW WE TRACK INVENTORY AND WHAT IS SELLING.**

**CASH DRAWER KEY IS IN THE DRAWER OF THE TOOLBOX WHERE THE ENVELOPES ARE STORED. THE CASH DRAWER, ONCE UNLOCKED, IS A MANUEL PUSH OPEN DRAWER. PLEASE LOCK THE DRAWER AT THE END OF YOUR SHIFT.**

# Manual Pages full of information ...

## COOKING INSTRUCTIONS

### **MINI DONUTS: (For High School Games have 2-3 bags ready)**

Can be cooked in Ninja or Microwave. If you have time cook in the Ninja (they turn out better)

- 1.) Turn on Ninja. Select Air Fryer and hit start. It will preheat.
- 2.) While it is preheating place 6 donuts on a baking sheet with parchment paper.
- 3.) Place in the oven and it will cook for 4 minutes
- 4.) Remove and toss in sugar (to the right in the drawer)
- 5.) Place donuts in white paper bag

### **PRETZEL: (Kept in Fridge in bin, if you run out more in freezer bins)**

Cooked in the Ninja for 3 minutes on Air Fryer mode. (You can cook 2 at once and for games make 2-3 to start the game and place in the pizza warmer to keep warm)

- 1.) Turn on Ninja. Select Air Fryer and hit start. It will preheat.
- 2.) Place pretzel on baking sheet with parchment paper
- 3.) Place in Ninja and turn time to 3 minutes
- 4.) Place in pizza warmer
- 5.) When ordered spray with water (on top of bin with salt) and dip in salt.
- 6.) Serve on paper plate with cup of cheese

### **PIZZA: MADE FOR ALL GAMES AFTER 11 AM**

Cooked in Ninja on Pizza mode. Do not place cardboard in oven. If the Ninja is being used there is an extra pizza oven above.

When cooked cut into 6 slices and place in pizza warmer.

Turn Pizza warmer on while pizza is cooking.

# Manual Pages full of information ...

## **COOKIES:**

Warm up 3 cookies per serving in microwave or ninja. Microwave 30 seconds. Ninja 1.5 minutes on warm up mode. Place in plastic cookie bag.

## **NACHOS:**

Place bag on chip side of nacho container and fill cheese side with cheese

## **HOT DOGS:**

Turn on hot dog roller. Take 4-5 hotdogs out of fridge and place on roller (premake for games only please).

## **POPCORN:**

Directions on back of popcorn bags.

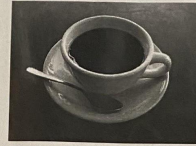
Turn on pot heater. Allow 3-4 minutes for it to warm up.

Cut open the oil/salt and pop corn and place in pot.

Turn on pot stirrer and allow to cook, when popping slows dump and turn off pot warmer and stirrer. Turn on warmer for machine.

Make 2 bags (1 at a time) for games.

# Manual Pages full of information ...



## Hot Beverages

### Coffee

- Use one coffee pod per batch.
- Make sure to dump used pod and rinse after each use.

### Hot Apple Cider

- Pump two pumps of syrup into a cup and fill with hot water.

### Hot Chocolate/Cappuccino

- Press button and release when cup is  $\frac{3}{4}$  full.
- To fill machine, remove canister and fill with one bag of powder.

### Hot Tea

- Fill cup with hot water.
- Put tea bag of choice in hot water.

Manual Pages full of information ...

**If You Have Time. . .**

- Re-stock candy.
- Re-stock beverages in the cooler.
- Sweep.
- Wipe down counters.
- Clean concession stand windows.
- Re-stock cups, lids, napkins, etc.