

WADENA HOCKEY CLUB
REGULAR BOARD MEETING MINUTES
June 12, 2017 5:30 PM

1. Call to Order/Roll Call: Amy Kine, BJ Meyer, Carrie Lunde, Erik Ness, Joe Sworski, Mac Nelson, Mark Lunde, Matt Lunde, Paul Mithun, Paul Warren, Tabby Swenson and Wendy Irons
2. Approval of Agenda: With the exception of moving agenda item 5. (G) Hockey Director and 5. (E) Concessions to the top of the agenda for this meeting because of a scheduling conflict. Motion to approve by Joe Sworski. Second by Paul Warren.
3. Approval of Minutes: Motion to approve minutes from May Board meeting by Carrie Lunde. Second by Joe Sworski. Motion carried unanimously.
4. Treasurer's Report: Amy Kine presented the Treasurer's Report. This month there was very little activity. All of the outstanding ice rental fees have been paid in full. The last donation for the mite jerseys has been received. Motion to approve the Treasurer's Report by Erik Ness. Second by Paul Mithun.
5. Reports:
 - A. Hockey Director/Coaches Committee:
 - A. Mark Lunde presented on a new concept for Fall League. The idea is to make Fall League more of tournament style play to keep the kids engaged and the program to be more organized. Mark will put some numbers together to purchase jerseys and get this concept in place and bring to the July Board Meeting. (See Attachment)
 - B. Mark Lunde presented on Team Genius. (See Attachment) This program is designed to help our coaches track progress made by each skater. This is an online program in which coaches would enter the information online and then be able to run reports for each skater. The coach would meet with each skater prior to the season, mid-season and then again after the season has ended so each skater knows what skills they need to continue to work on. For more information please see the Team Genius website.
 - B. Concession:
 - A. Matt Lunde brought a proposal to the board in which himself, Erik Ness and Amy Kine would be concession managers for the 2017-2018 season. (See Attachment) After discussion on this topic it was decided that Amy Kine would not need to be at the arena to open and close the concession stand, this would be Matt and Erik's duty as concession managers. After much discussion Paul Warren motioned for:
 - Matt Lunde will receive \$1,000 per year for Concessions Manager
 - Erik Ness will receive \$1,000 per year for Concessions Manager
 - Amy Kine will receive \$500 for being responsible for depositing the concessions money and for preparing the cash drawer in order to open concessions.
 - Amy Kine will receive another \$500 for being Wadena Hockey Treasurer
 - In addition a 3% profit for all concession sales will be tallied at the end of the season and split evenly between Matt Lunde, Erik Ness and Amy Kine.Joe Sworski seconded this motion. Motion carried.

- C. Ways & Means Committee: As an additional fundraiser that would be fairly easy to organize Tabby Swenson suggested holding a burger bash during registration this fall. More information to come on this. Tabby will let us know at the July Board Meeting if she is willing to chair Blue Line Bids again this coming year. Matt Lunde has already reserved a room at the Elks for January 27, 2018 for the upcoming Blue Line Bids fundraiser.
 - D. Marketing/Advertising Committee: No Report
 - E. Public Relations and Communications: Wendy Irons created a newsletter to be sent out to Wadena Hockey Association Members. Discussion was held on how this information should be distributed. It was decided that Email, Facebook, the Wadena Hockey Association Website will all be great places to post this information. The newsletter will go out once a month the week following the monthly board meeting. Motion to add this as an additional item on the agenda for the future by Erik Ness. Seconded by Paul Mithun.
 - F. Building/Equipment Committee:
 - A. The old Zamboni is up and running. Discussion was held on how much the Zamboni should be sold for and it was decided that opening bids would start at \$5,000. The money we receive for selling the Zamboni will be deposited into the capital expenditures account. Motion to sell the Zamboni along with 4 propane tanks and the 2 spare tires with a starting bid of \$5,000 by Erik Ness. Seconded by Carrie Lunde.
 - B. There is only 1 set of hockey equipment that was not collected this year. We will be depositing the check for the equipment rental fee.
 - G. Registrar, Scheduler, and Referee:
 - A. We will be moving registration from September 11th to August 20th. This will help the association determine numbers for the upcoming season. We will be adding a “Pay now” or “Pay Online Later” option to the online registration. Squirts thru Bantams registration will be from 6pm – 8pm at the arena on August 20th. Mite registration will be September 24th.
 - B. Try hockey for free will be on November 4th. This is for children ages 4-9 to come to the arena and try skating. The association will let them use skates and a helmet for this day.
 - C. Carrie Lunde found a new software program called Auto Ice to help ease scheduling frustrations. This program will work with SportsNgin to schedule practices and games. The cost for this program is \$600 for the 1st year, \$700 for the 2nd year, and \$750 for the 3rd year. The association is able to cancel after the 1st year if it does not suite our needs.
 - H. Mite Director: No Report
6. Public Forum: No Report
7. Old Business:
 - A. Ice will go in the last weekend in September. First day of Fall League will be October 2nd.
 - B. Discussion was held on which parades we should represent Wadena Hockey. Volunteers are needed to help support this project.
 - C. Sentence to Serve has requested Wadena Hockey Association purchases a push mower in lieu of payment for them cleaning the hockey arena for the past year. Erik Ness will check on the price of a lawn mower to fulfill their request.
 - D. Wadena Hockey Association has an annual membership for an online program called Survey Monkey. Carrie Lunde suggested that we take advantage of this membership and
-

send out various surveys throughout the year to see how we are doing and get suggestions from our members.

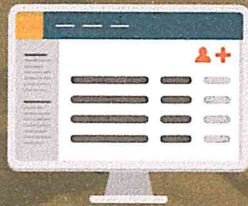
8. New Business:

- A. BJ Meyer presented on offering a checking camp in late October or early November targeting Pee-Wee's and Bantams. Offering this clinic to our players would not only benefit our skaters the association would also benefit by earning ice rental fee. The association could offer this clinic to our member skaters at a discounted price. BJ will find out more information and bring it to the July Board Meeting.
- B. Our July Board meeting will be July 10th at 5:30 at The Uptown.

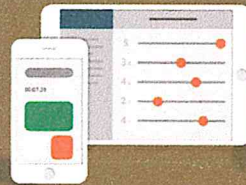
9. Adjourn: Motion to adjourn meeting by Paul Warren. Seconded by Erik Ness.



Deliver a better youth sports experience with the only comprehensive athlete assessment tool.



Draw it up online and prepare for tryouts in minutes



Score players from multiple mobile devices



Analyze results, form teams, and email placements

Strengthen and Grow your Hockey Organization

Attract and retain top players

Attract players looking for clubs who focus on development, growth, and feedback.

Provide valuable feedback

Share detailed reports, comments and track progress over time so your players can develop into stronger athletes.

Form better teams

Improperly formed teams hurt everyone. Not enough playing time or not enough competition can cause kids to quit, and hurt next year's turn-out.

Provide better service

Your customers expect a great sports experience from your organization. By using professional tools to evaluate, place, and develop your players, you can offer them more for their money.

Generate more revenue

Host additional evaluation events, sell reports and sponsorship, or charge more for your registrations.

Save Time and Energy

Eliminate low value busy work

By switching from paper, you can save dozens of hours by eliminating the cumbersome process of transferring illegible hand-written scores from paper to spreadsheet. No more crunching numbers or coming up with complex ranking formulas either.

Reduce volunteer turnover

By eliminating the painful parts of the evaluations process, volunteers have a more enjoyable experience and stick with your club longer.

Reduce parent phone calls

Applying a more transparent, accurate, and consistent process around your tryouts and evaluations allows parents to be more confident in your decisions, leading to less second guessing and fewer challenging conversations.

Retain historical results and data

One safe and secure place for all of your historical assessments. Watch players develop and grow from year to year. Use historical data to help make tough player placement decisions.

All the Features You Need to do Evaluations Your Way

► Build custom assessments

Designed to be flexible so it works for all organizations and all types of assessments including tryouts, in-season feedback, camps, clinics and coach's evaluations.

► Import players

No manual entry required. Easily upload player data from a CSV or SportsEngine registration.

► Easily check-in players

Easily check in players as they arrive. Assign player pool, number, and even handle walk ups with ease.

► Enter scores on your mobile device

Easy to use so your coaches and evaluators spend less time learning to use it and more time developing their players.

► Score players on or offline

You can't afford to have the whole system fail if internet is spotty or nonexistent - TeamGenius is the only player development tool that automatically switches to offline mode so you can continue scoring players with or without a connection.

► See results and rankings instantly

Aggregate player scores and rankings calculate in real-time as scores are entered. Grab some popcorn and watch the results live.

► View accurate player rankings

Be confident in your player rankings. Know your best players based on virtually any criteria or weighting system you'd like.

► Analyze player data and pull reports

Use our analytics engine to sort and filter the data however you'd like. Then pull team rosters and player performance reports.

► Export to Excel, PDF, and more

Prefer to work with your results and analytics outside of TeamGenius? No problem - you can easily export the data for use elsewhere.

► Form teams online

Build your times right within the results engine and easily export rosters and placements.

► Send batch emails

Create email templates and send personalized batch emails with team placements, player performance reports, and more.

► Capture player profile pictures

Capture and display profile pictures for each player while scoring in the mobile app, and while forming teams.

See player rankings instantly, pull reports, and communicate results

Analyze results with our patent pending player analytics engine and TeamGenius Score®. Form teams and use our email engine to send team placement notifications and feedback to players and parents within minutes after tryouts.

Player Pool	Name	Position	Technical	Tactical	Physical	Psychological	TeamGenius Score
U12 Boys	Burke, Jonathan	Forward	4.83	4.83	4.50	4.33	92.5
U12 Boys	Cole, Shane	Goalkeeper	3.67	4.33	4.33	5.00	86.7
U12 Boys	Robertson, Richard	Defender	5.00	3.67	4.00	3.83	82.5
U12 Boys	Boyd, Joseph	Defender	4.67	3.67	4.83	3.00	80.0
U12 Boys	Mendoza, James	Defender	3.33	4.33	3.83	3.67	75.5
U12 Boys	Stewart, Noah	Midfielder	3.83	3.00	3.00	4.63	72.5
U12 Boys	Evans, Jason	Midfielder	3.33	3.67	3.67	3.50	70.8
U12 Boys	Gaza, Peter	Defender	3.00	3.50	3.17	3.83	67.5
U12 Boys	Elliott, William	Midfielder	3.25	3.17	3.00	3.08	62.5
U12 Boys	Mitchell, Nicholas	Goalkeeper	3.00	2.67	3.50	2.67	59.2

Customize your athlete assessment and import players in seconds

Create custom player evaluations using both quantitative and subjective scoring criteria, define player pools, import players from excel or a SportsEngine registration, and manage player check-in from the TeamGenius administrative website.

Step 1: Select a CSV with Player data to import, or import a registration from your SportsEngine account. If your data contains Player Pools and Player #'s, select the Assessment to check them. (Player #'s is required)

Assessment: 2017 Annual Tryouts (Example)

Select a file to import.

Drop file here | Select a CSV file...

If your import data does not contain Player Pools and Player #'s, you can ignore this.

Or

sportengine
Import a SportsEngine Registration

TEAMGENIUS
Copyright © 2017 MyTeamGenius LLC. All Rights Reserved. | Terms and Privacy



FALL LEAGUE

(A New Concept)

Wadena Hockey's Fall League is a great advantage for our kids to get on the ice and start moving and thinking Hockey again!

The challenge we face is that it often becomes boring and monotonous for our players as the same or similar drills are run over and over and there is really no true stopping/starting point for Fall League vs. Regular Season.

A BRACKETED TOURNAMENT

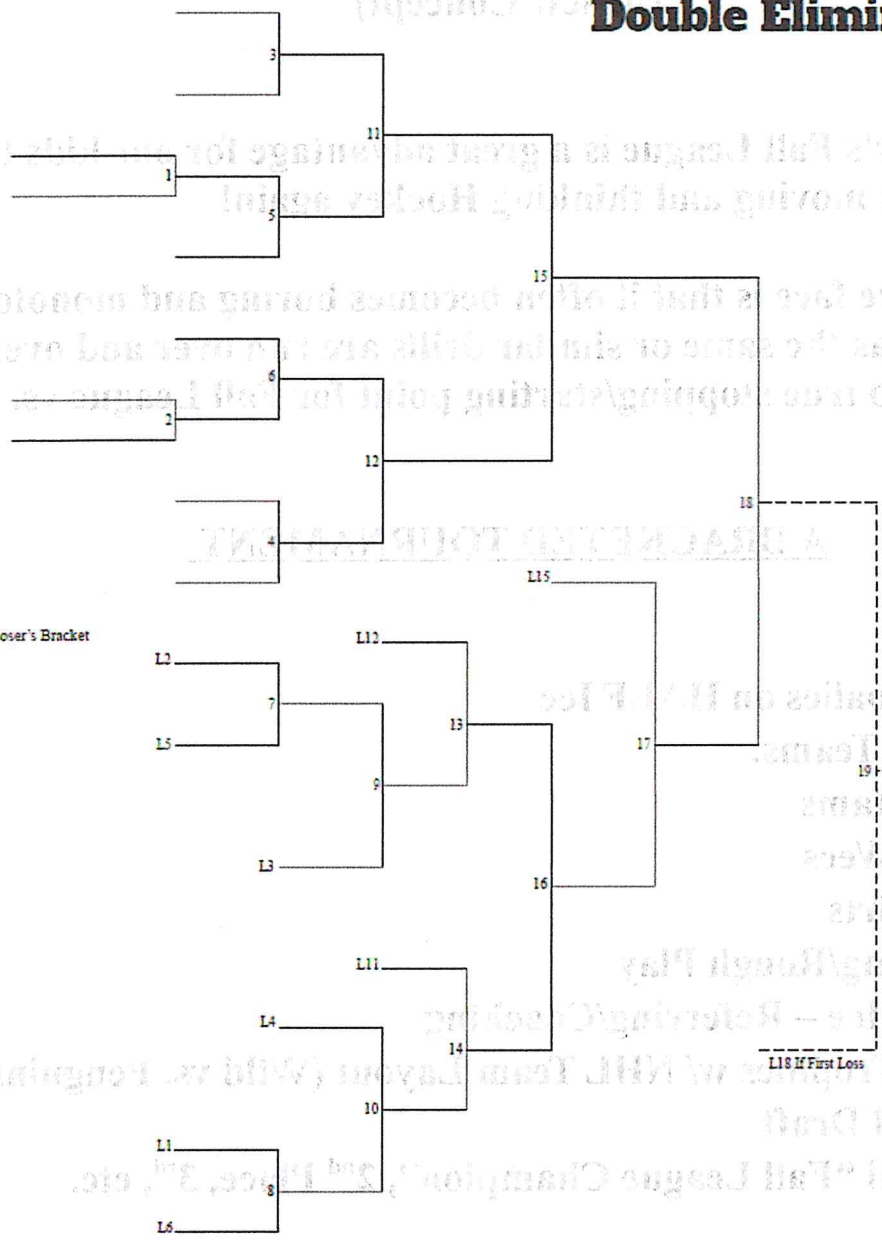
- **6 Weeks**
- **3 on 3 + Goalies on HALF Ice**
- **Goal of 10 Teams:**
 - **1-2 Bantams**
 - **2-3 PeeWees**
 - **1-2 Squirts**
- **No Checking/Rough Play**
- **Coach On Ice – Referring/Coaching**
- **Jerseys + Trophies w/ NHL Team Layout (Wild vs. Penguins, etc...)**
- **Semi-Blind Draft**
- **An internal “Fall League Champion”, 2nd Place, 3rd, etc.**

BENEFITS:

- **Fun, interactive play for players AND coaches (and parents)**
- **Healthy competition (and winning) for all teams and players before a season begins!**
- **A “truer” view of individual skills for try-outs**
- **Ability for players to play up/down with other skill sets.**
- **Better/More Fall League Attendance**

Winner's Bracket

10 Team Double Elimination



Loser's Bracket

L18 If First Loss

- Fun interactive play for players AND coaches (and parents)
- Healthy competition (and winning) for all teams and players before a season begins!
- A "trainer" view of individual skills for try-outs
- Ability for players to play up/down with other skill sets.
- Better/Worse Fall League Attendance

2017/2018 WHC Concession Proposal

MANAGEMENT

- Matt Lunde and Erik Ness will manage the concession stand. Amy Kine, as Treasurer, will manage the payments and deposits.
- Matt and Erik will be responsible for Food Safety, inventory procurement, food prep, inventory turns, stocking product, training staff as needed, housekeeping, and all other duties as deemed necessary.

SCHEDULING

- Hours to be determined after registration numbers are in and games are scheduled
- DIBS to be used again for scheduling
- Management to have discretion with peoples hours in unusual circumstances

OPERATON

- Same shift sizes as last year with a shift added for food prep prior to opening
- Hours of operation based on daily game schedule and shift openings
- Management to fill in as necessary

INVENTORY

- Mason Brothers and Pepsi to remain as main suppliers for inventory
- Management responsible for menu and items for sale
- New Freezer may be needed based on historical usage

COMPENSATION

- \$1,000 each for Matt Lunde and Erik Ness. After doing this last year, I can tell you that is a bargain. Payment Schedule to be determined upon agreement of this proposal.
- We propose that Amy Kine should, at a minimum, be reimbursed for her child's annual fees. Managing the concession stands funds goes above and beyond what should be required of the WHC Treasurer.

