

# WCYHA Scoreboard Instructions – MITE GAMES

## Turning ON and configuring

To turn the scoreboard on, there is a switch on the right side of the control box, toggle to ON position.  
See Diagram 1-H

You will be asked to “Start where turned off last?” **Under normal circumstances answer NO.** If there was an interruption to the clock, i.e., a power outage, answer YES.

You may be shown, “Do you want to use a Bookmark” answer No.

You will be shown, “I am your Nevco MPC-6 ... Enter your model code” -> Enter 871                      You see HOCKEY

You will be asked “Do you want to operate wireless”, answer YES.

The control will prompt to SELECT GROUP, “SCOREBOARD 4770” should appear, answer YES.

You will be asked “Do you want to use penalty timeout” **\*\*If your game is using a running clock (meaning the clock will not stop on whistles) and you want penalty time to stop during a stoppage in play, answer YES\*\*** For normal WCYHA games we stop the clock on whistles so answer NO.

## Setting the time

Press    Set->Time    You see SET MM:SS.s

For 16:30 minutes:

Press    1630    You see SET 16:30.s

Press    Yes    You see PERIOD 0

Press    1 (Or appropriate period #)                      You see 16:30.0 DN

## Configuring Auto-Horn for 1:30 segments

Press SET

Press OPTIONS

Press No **3** times    **You see ENABLE SEGMENT TIMER?**

Press Yes    You see SEG 01 MM:SS

Press 0130

Press Yes    You see ADD ANOTHER SEGMENT?

Press No **7** times    You see 16:30.0 DN

- To start the time, flip switch on hand control (See Diagram 2-N)
- To stop the time, flip switch on hand control (See Diagram 2-N)

**At Any time to return control box to display clock time, press the Time button**

All other scoring functions remains same as standard WCYHA game

***When finished a MITE game turn the scoreboard off, otherwise the segments will remain intact for the next event using the scoreboard.***

Diagram 1

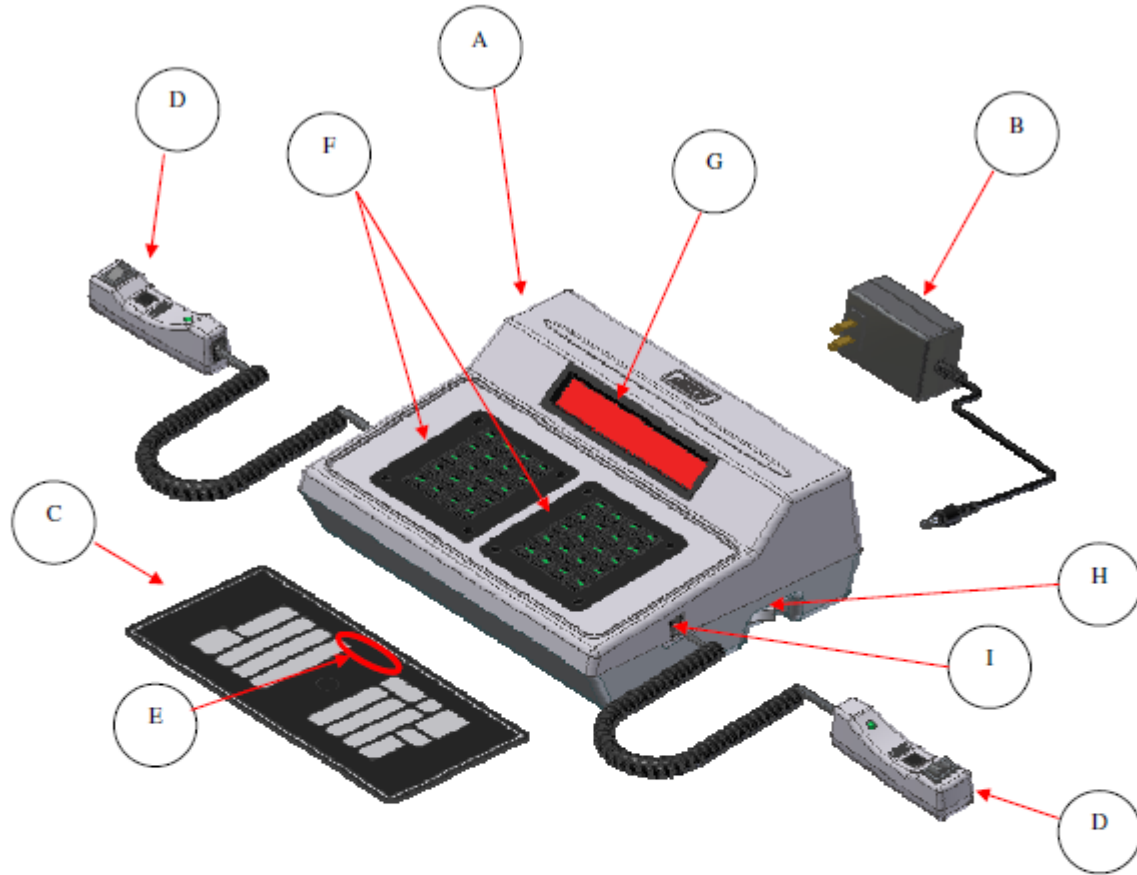


Figure 1 – MPC Control (front view)

A.	MPC Control	Can operate scoreboards for a wide range of sports and features.
B.	Power Supply	9 V DC (included with the control)
C.	Overlay	Fits on top of control to label the keys (included with system)
D.	Hand Held Switch	A TCS-5 time control switch is included with each control. Other switches are included with the accessories they operate.
E.	3 character Model Code location	This code sets up the control for your scoreboard model and sport
F.	Keypads	Left and Right (20 keys each)
G.	16 character display	Bright LED for better visibility
H.	Power On / Off switch	Removes power from the control only (does NOT turn power off to scoreboard)
I.	Jack for hand held switch	One on each side of control (use either jack for any Hand Held switch)

Diagram 2

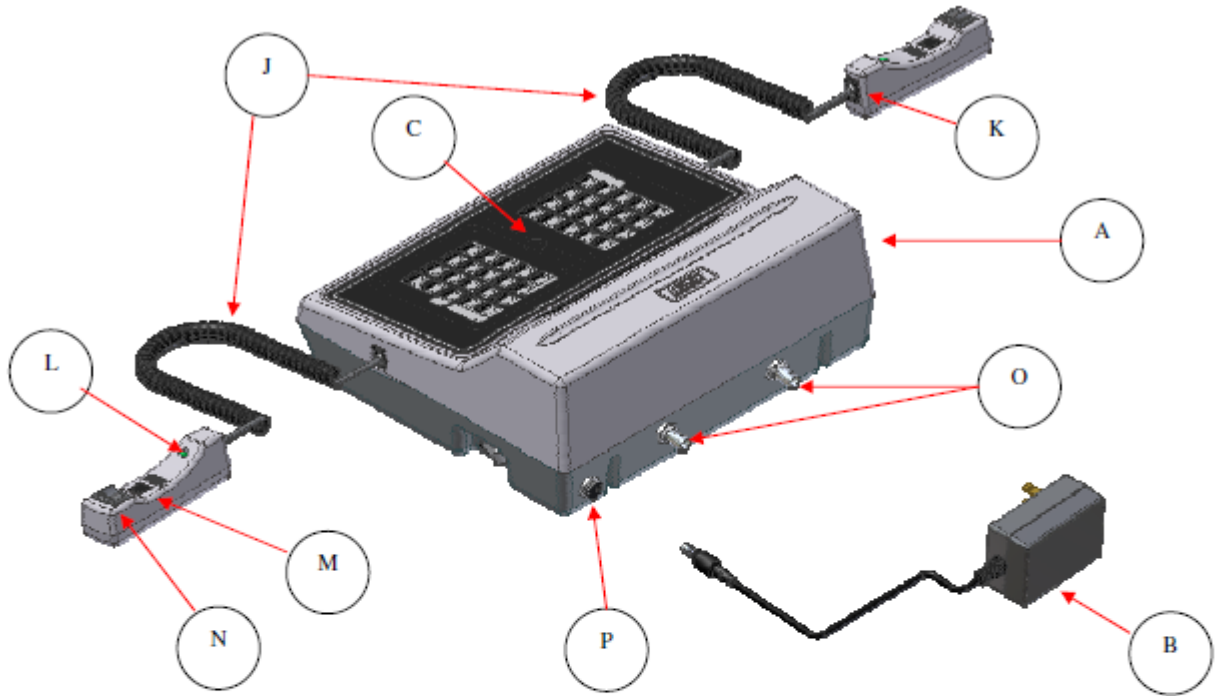


Figure 2 – MPC Control (rear view)

A.	MPC Control	Universal – to change sports, change the Overlay and enter the new Model Code.
B.	Power Supply	9 V DC (included with control)
C.	Overlay	For your scoreboard model (included with system)
J.	Coiled Cord	Stretches to over 4 ft. (included with switch)
K.	Socket for coiled cord	Makes it easy to replace the cord
L.	LED test indicator	Verifies that the Hand Held switch is working
M.	Remote push button switch	Function depends on type of Hand Held switch (on TCS-5 – sounds the horn)
N.	Remote rocker switch	Function depends on type of Hand Held switch (on TCS-5 – controls the time)
O.	Output to scoreboard	BNC connector for coax cable (use either or both as needed)
P.	Jack for power input	9 V DC