

Planmed

Sophie

CLASSIC





dedication

experience



trend-setting
functions

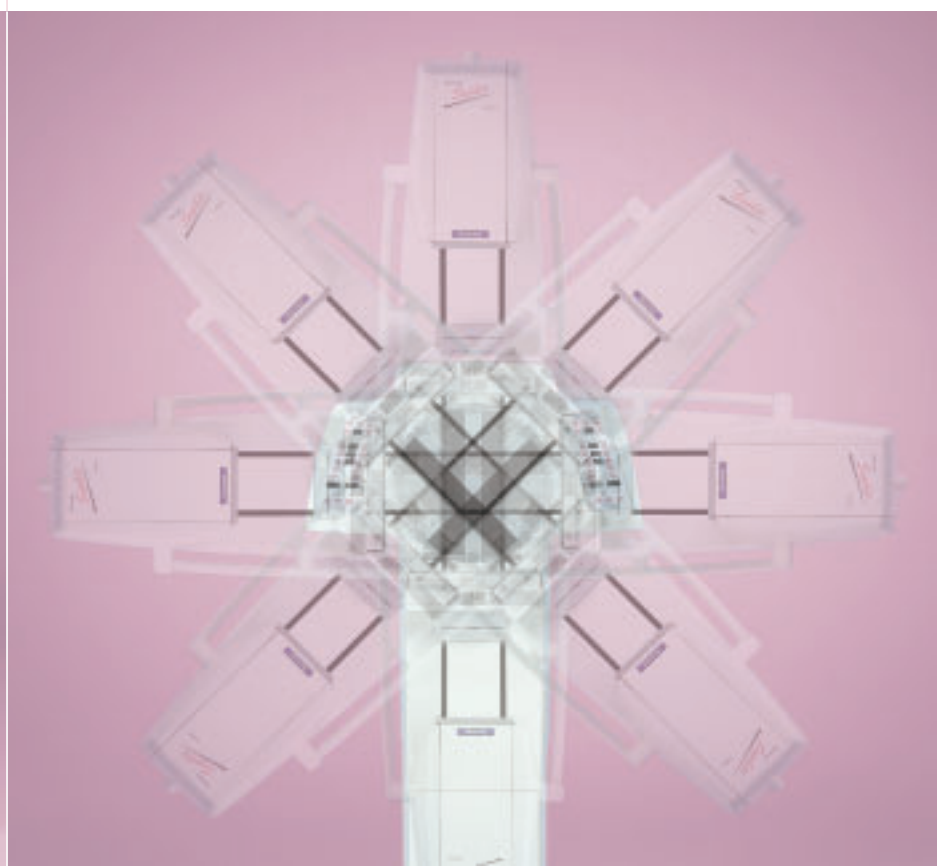
The sleek light-weight Auto-Load Bucky provides ergonomic, effortless and tech-friendly cassette loading and unloading. On insertion, the cassette is automatically sensed, gently accepted and precisely aligned with the radiation field. The cassette is easily ejected with the touch of a button, or can be programmed to automatically eject from either side of the Bucky upon completion of exposure. The proprietary grid with special driving mechanism ensures high contrast and enhanced resolution.

The Sophie Classic unit can be equipped with a new proprietary driving circuit design that further enhances the motorized C-arm movements. Thanks to this advanced innovative engineering design, the movements are now much faster, but also virtually silent. Sophie Classic's acclaimed isocentric C-arm rotation and vertical drive include this optional cutting-edge feature, making the examination even more patient- and user-friendly while increasing efficiency and through-put.



attractive
ergonomics

The Planned Sophie Classic unit with Auto-Load Bucky is closely associated with acclaimed ergonomics and patient-friendliness. Our dedicated solutions focus on creating innovations that provide the mammography technologists ease of use, while increasing their productivity. Automation is used to lighten the work burden, to speed up the examination procedures and to enhance patient comfort.



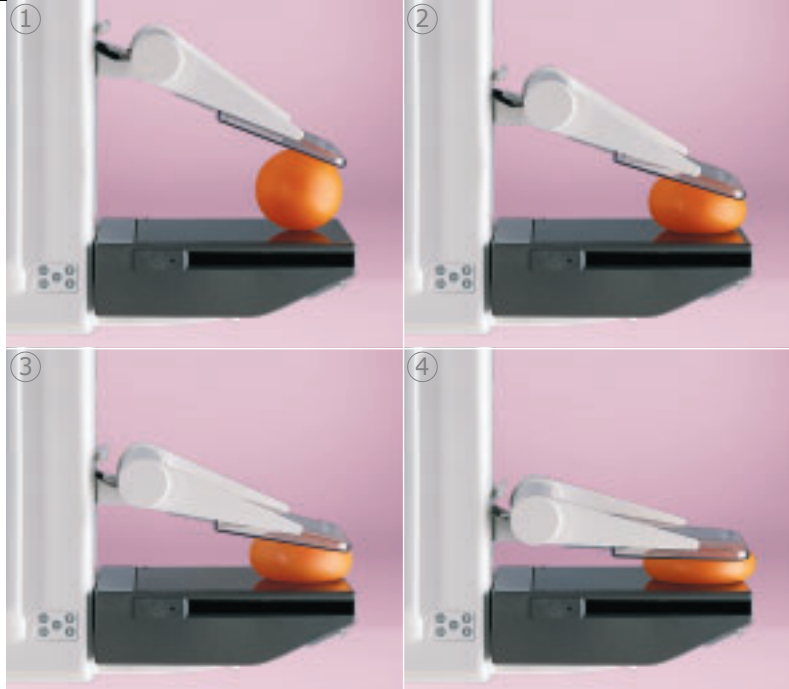
The Planmed Sophie Classic with its modular design provides a platform for ordinary and extraordinary compression systems. The patented, degressive compression design slows the paddle speed upon contact with breast tissue, ensuring steady, firm compression with minimal discomfort. The vacuum-formed paddles, made of flexible material, conform exceptionally well to the anatomy of the breast. This design helps to provide better image quality while offering more comfortable compression to patients with sensitive breasts.



Planmed offers two different state-of-the-art high speed bi-angular x-ray tubes for the entire Sophie equipment line. Both x-ray tube assemblies are tailored and optimized to provide higher radiation output with shorter exposure times, improved contrast and finer detail. The customer decides which of these tubes is preferred on their market and consequently it will be equipped with the ordered system.

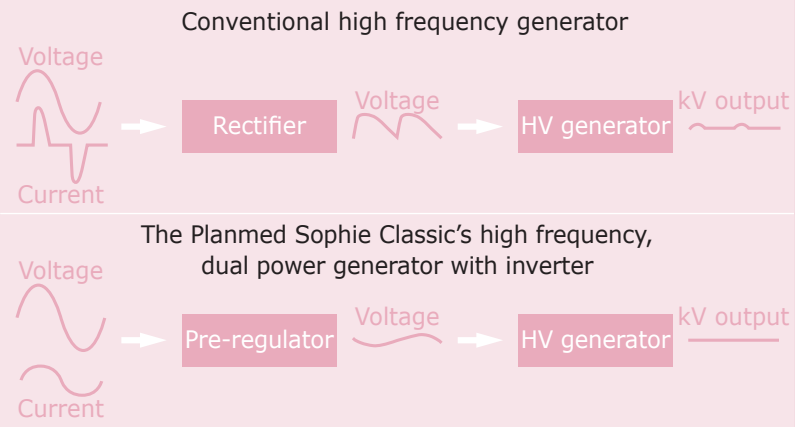


positioning confidence



Twincomp, the unique and patented compression, is an optional compression solution for small or augmented breasts. Twincomp's exclusive compression design helps in implant displacement views and is clinically proven to image more chest wall tissue*. The paddle angle provides greater hand space for better breast positioning. As the paddle travels downward and becomes parallel, it gently smoothens skin folds while pushing the breast tissue away from the chest wall into the field of view.

*Sardanelli F, Zandrino F, Imperiale A, Bonaldo E, Quartini M G & Cogorno N: Breast Biphasic Compression versus Standard Monophasic Compression in X-ray Mammography, Radiology 2000, November 2000, Volume 217, Number 2, pp. 576-580.



cutting-edge performance

The Planmed Sophie Classic stands out from other mammography units with its integrated and extremely compact high-frequency generator. The dual power generator has established a considerable degree of technical superiority with imaging power that is truly constant and efficient. Image quality is never compromised with its full-featured technology and excellent performance. The ripple-free output improves contrast, shortens exposure times, reduces glandular dose, eliminates retakes and extends the life span of the x-ray tube.

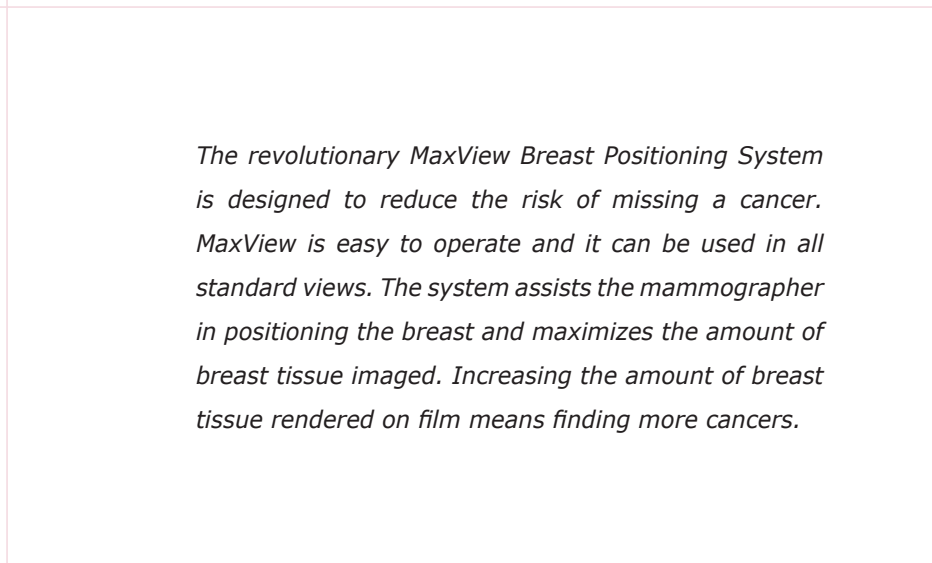
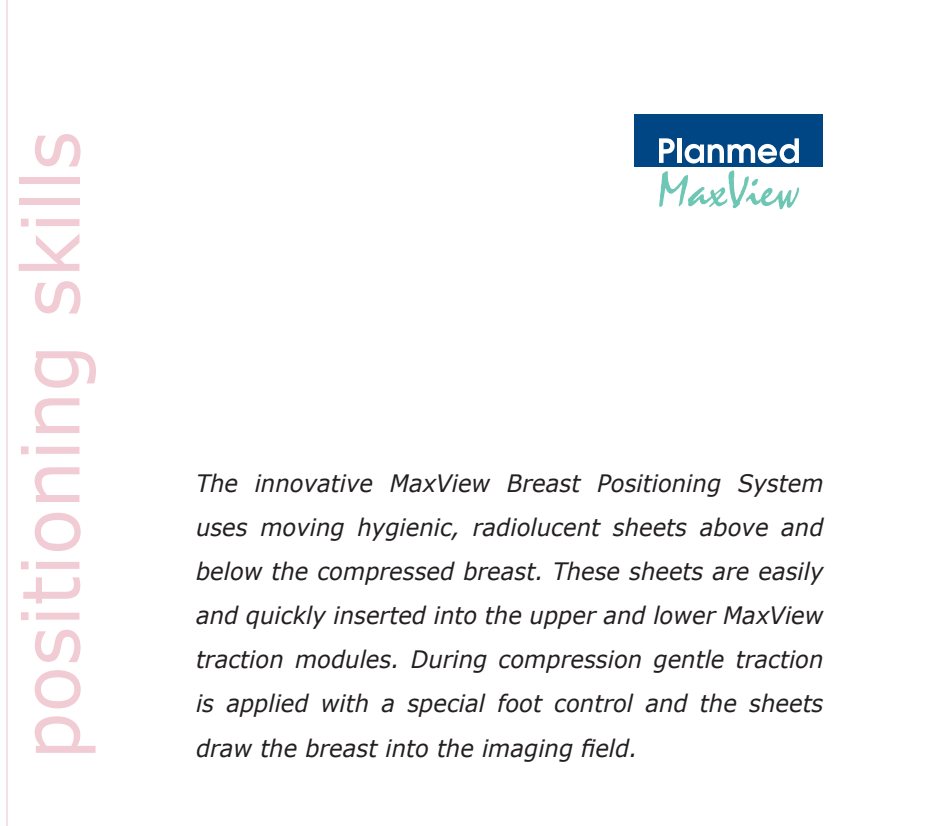
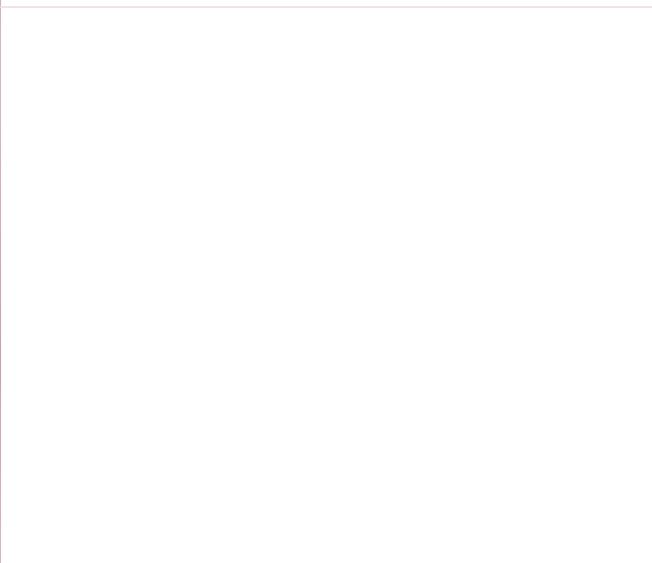




MaxView

experience





maximize
positioning skills

The innovative MaxView Breast Positioning System uses moving hygienic, radiolucent sheets above and below the compressed breast. These sheets are easily and quickly inserted into the upper and lower MaxView traction modules. During compression gentle traction is applied with a special foot control and the sheets draw the breast into the imaging field.

The revolutionary MaxView Breast Positioning System is designed to reduce the risk of missing a cancer. MaxView is easy to operate and it can be used in all standard views. The system assists the mammographer in positioning the breast and maximizes the amount of breast tissue imaged. Increasing the amount of breast tissue rendered on film means finding more cancers.

The optional MaxView Breast Positioning System provides the ultimate in breast positioning and compression. MaxView uses gentle traction to capture and draw more breast tissue into the field of view. With MaxView compression, more breast tissue is visible, compared to mammography units using conventional compression systems. By capturing more breast tissue MaxView maximizes chances for early lesion detection.

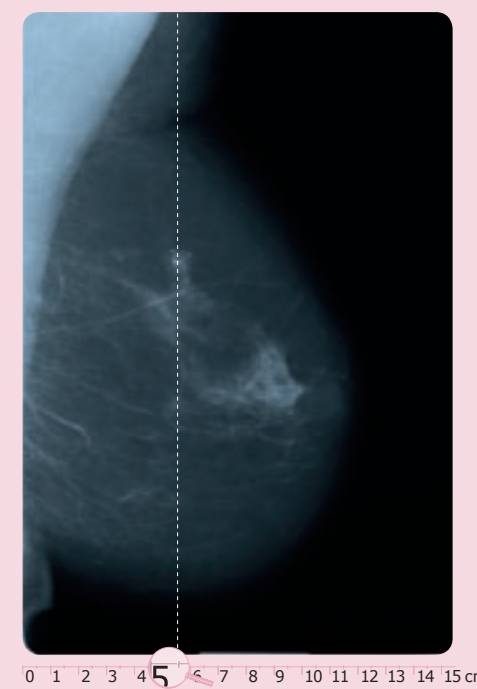
unique
MaxView



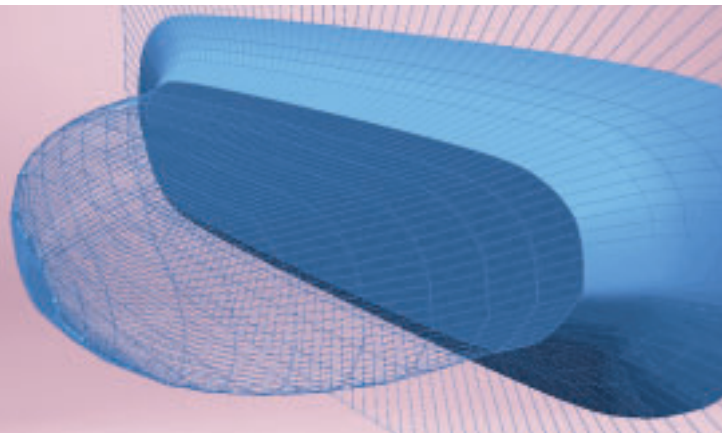
Another MaxView advantage is that it provides sharper visualization of the glandular tissue structures. Traction also improves image clarity by separating superimposed breast tissue. The technologist can independently move the upper or lower radiolucent sheet to different positions to further aid in breast positioning. After the exposure, the compression automatically releases and the sheets return to the starting position.



The advantage of the pull and roll effect can be clearly seen when comparing an image taken with a standard compression system with an image taken with the MaxView Breast Positioning System. Increasing the field of view with an additional volume of tissue imaged directly translates to finding more potential cancers earlier. MaxView can provide up to 2 cm more breast tissue on some patients*. The roll effect is not only away from the chest wall, but also sideways. Better spread of the tissue enhances the diagnosis.



0 1 2 3 4 5 6 7 8 9 10 11 12 13 14 15 cm



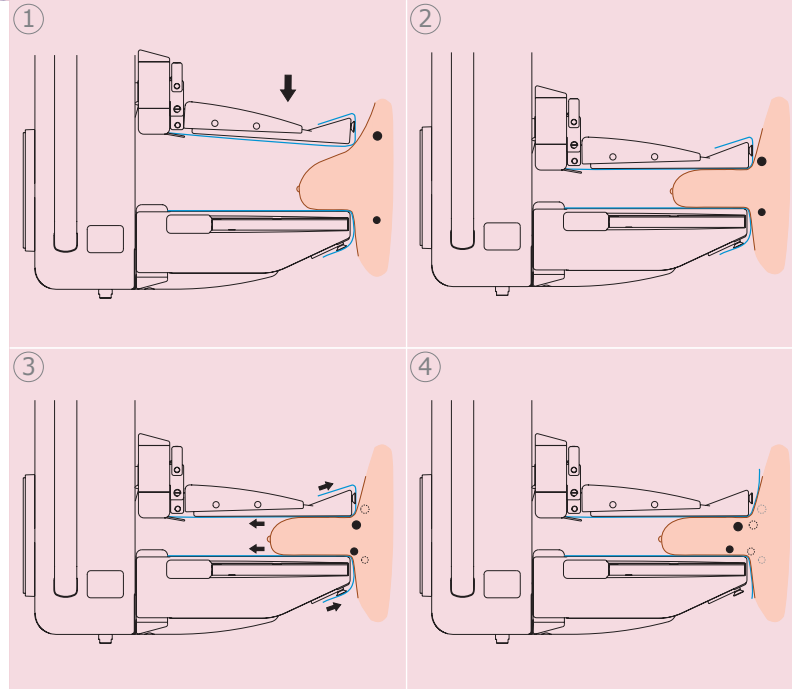
deliver results



complete picture

It is difficult to maximize the field of view with standard compression systems. The back of the breast is frequently excluded from the imaging field, whether film-screen or full-field digital imaging technology is used.

Maximizing the amount of tissue imaged is complicated, since the back of the breast may slip from the compression system. As this is the thickest part of the breast, even losing a few millimeters of tissue means that a significant volume of breast tissue will not be imaged. This may result in a cancer being missed.



In a small breast, 1 cm more tissue can be up to 30% of the breast volume. Even in a larger breast, 10 to 15% of tissue might not be imaged when MaxView Breast Positioning System is not being used. Furthermore, clinical studies show that the traction is tolerated well by the patients and normally no further discomfort is felt.

* Moore R H, Kopans D B, Chorlton M & Raimondi J: Improved Mammographic Positioning Using an Automated Assistance Device: MaxView. RSNA 2001 Scientific Program - Scientific Paper Sessions pp. 557-558.



0 1 2 3 4 5 6 7 8 9 10 11 12 13 14 15 cm



versatility

experience



easily
upgradeable

The optional Planmed Cytoguide biopsy needle guidance system, driven by the Planmed Sophie Classic, is regarded as the most advanced and elegant system for stereotactics today. Integrated into the Planmed Sophie Classic, the motorized and microprocessor controlled biopsy unit is operated conveniently through the console panels. Long SID, combined with optimized C-arm angulation geometry, facilitates the best accuracy also in the Z-direction. Longer SID provides more space for breast positioning and ample room for stereotactic core biopsy procedures.

The system configuration can be either film/screen based Cytoguide or digital CCD-based Digiguide. The sophisticated adaptation of the light-weight biopsy unit facilitates simple set-up or easy add-on to an existing Planmed mammography unit.

The Sophie Classic with Cytoguide 2 stereotactic device is compatible with the Mammotome® ST vacuum-assisted breast biopsy probe. An optional dedicated lateral holder provides a platform for use with the Mammotome® ST.



modular
design

Modular system architecture allows the system configuration to be easily expanded with several optional accessories such as magnification and needle localization kits, network ID cameras, Twincomp compression and stereotactics. A single magnification stand offers 1.6x and 1.8x magnification factors. The magnification stand is light, rigid and easy to attach. The large positioning area provides patient comfort and ample space for breast positioning. Thanks to automatic cassette loading and unloading, the cassette handling is ergonomic and technologist-friendly.



The Planned Sophie Classic with Auto-Load Bucky is pre-assembled for MaxView Breast Positioning System. The unit can be converted quickly into a true MaxView system simply by attaching dual traction modules and connecting special MaxView foot controls. Single traction modules can be used with both Buckys; only the sizes of the tailored sheets vary. Dedicated MaxView footcontrols enhance the overall performance by providing not only traction and compression control, but also the vertical drive of the C-arm.



The optional Planned Accessory Storage Unit provides a configurable and affordable solution for storing and organizing various Planned mammography accessories. Two drawers and dedicated shelves for small and large items offer ample storage space and allow easy access for selecting needed accessories. The Planned Accessory Storage Unit has a sturdy aluminum construction and can be either stand-alone or attached to the optional Planned Radiation Protection Screen.



exceptional
creativity



dedicated
solutions

The innovative telescopic column structure facilitates compressed size and light-weight. Wheels provide greater flexibility and means for easy transportation if the need arises. During transportation, the unit folds down which, together with the telescopic column, provides a low center of gravity and good visibility for steering. The wide line voltage range allows, together with 15 amp fuses, simple wall outlet connections in most places.



Planned focuses its activities on providing better solutions for mammography. The company is devoted to delivering such high quality technology to the marketplace that not only eases the everyday work, but also increases the efficiency in the working environment. With our expertise, in-depth knowledge and by applying state-of-the-art technology and solutions, Planned is regarded as an acknowledged leader in the field of mammography.





equipment and accessories



Planmed offers a comprehensive range of mammography systems and optional accessories:

- Planmed Sophie
- Planmed Sophie Classic
- Planmed Sophie Mobile
- Planmed Sophie Classic Mobile
- MaxView Breast Positioning System
- Planmed Cytoguide
- Planmed Digiguide
- Planmed Radiation Protection Screen
- Planmed Accessory Storage Unit
- Planmed Network ID Camera

PLANMED U.S.A., 100 N. Gary Ave., Suite A, Roselle, Illinois 60172, USA, tel. + 1-630-894-2200, fax + 1-630-894-4271
PLANMED Germany, Hindenburgstraße 158, 22297 Hamburg, Germany, tel. + 49-40-51320 633, fax + 49-40-51320 634
PLANMED Italy, Via Santa Rita da Cascia, 33, 20143 Milan, Italy, tel. + 39-02-8912 2868, fax + 39-02-8912 0725

Planmed

Planmed Oy Asentajankatu 6, 00880 Helsinki, Finland, tel. + 358-9-75905 300
fax + 358-9-75905 555, e-mail: sales@planmed.com, www.planmed.com

Mammotome ST is a registered trademark of Ethicon Endo-Surgery, Inc., a Johnson & Johnson company.
Photos may contain optional items not included in the standard delivery. Rights for changes reserved.