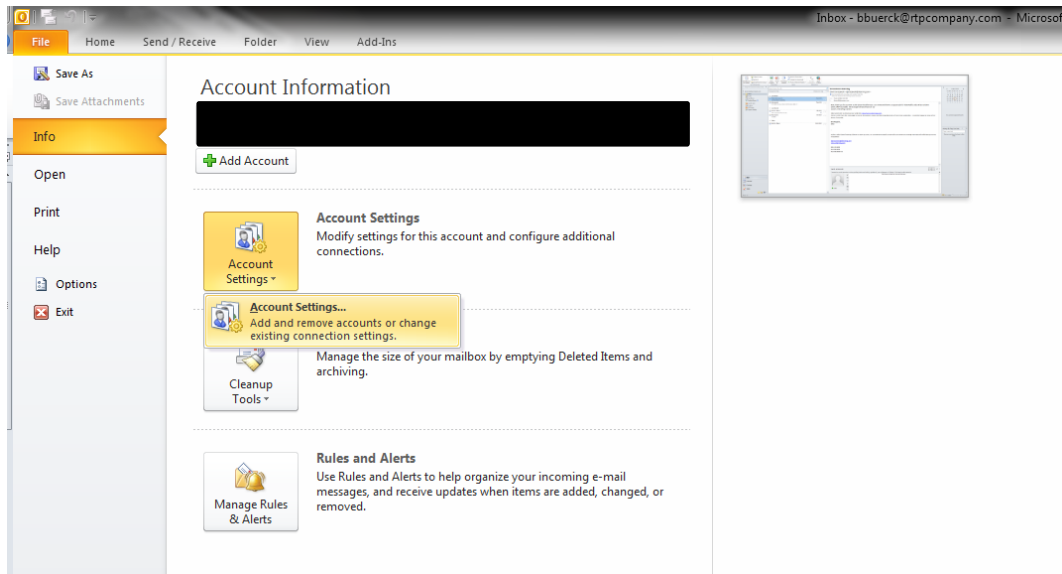


## Adding Calendar to Outlook 2010

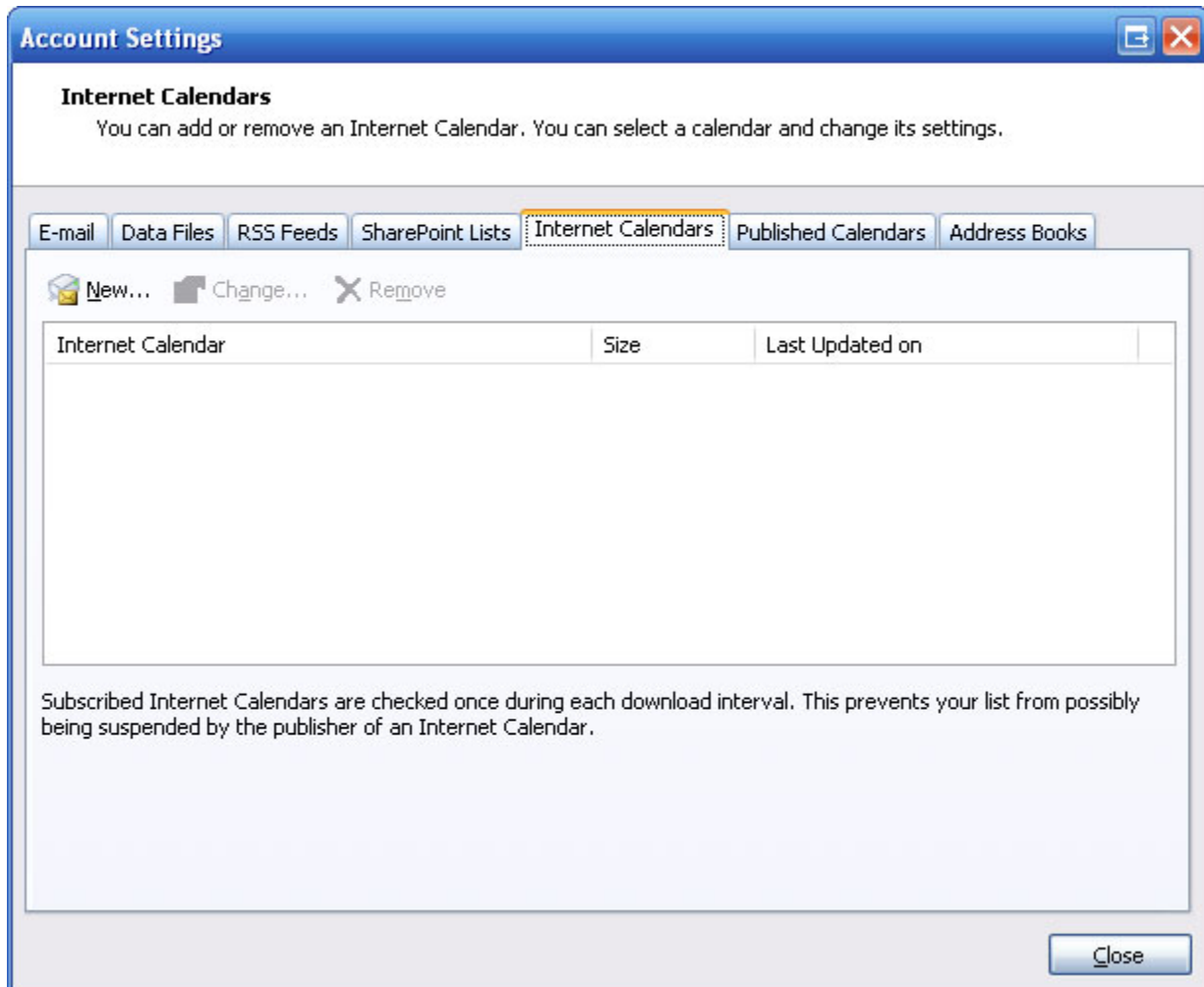
An iCal feed is a common technique used for sharing calendars among software that supports a standard calendar format.

**To add an iCal feed in Outlook, follow these instructions:**

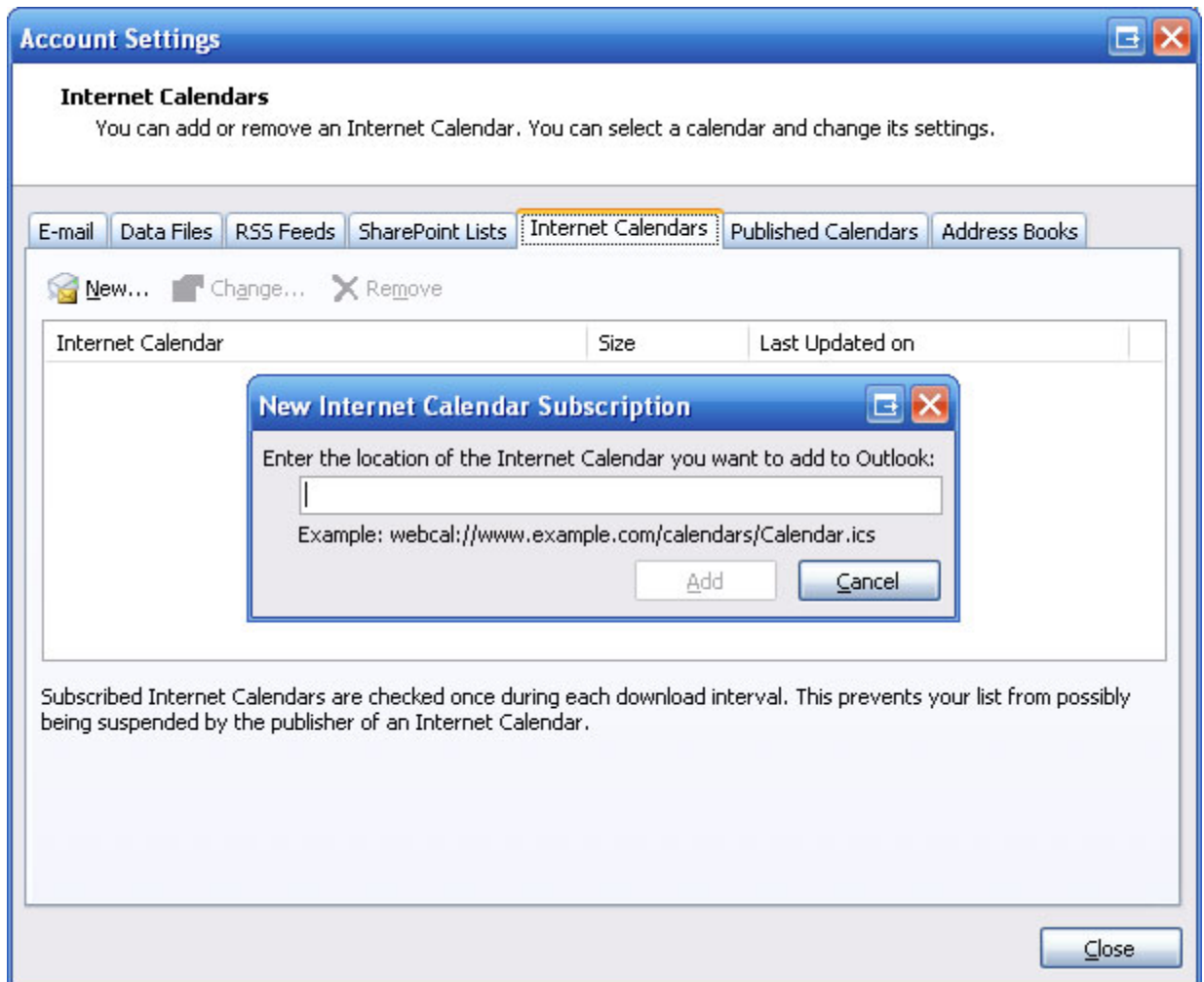
**In Outlook, Choose File, Account Settings, and Account Settings**



- In the dialog box that appears, click on the "Internet Calendars" tab.



- Click on the "New" link and paste your copied iCal link from the Hockey Website into the field.



Click "Add" when finished and enter a custom name for this new calendar if you want.

Click "OK" when finished.

Click on your regular "Calendar" link in Outlook to view your default calendar. This new calendar should now be available in addition to your default calendar and can be viewed as an overlay to your default calendar or side-by-side. For more information about viewing internet calendars in Outlook.